

FIAT
PROFESSIONAL

E-DUCATO & DUCATO




MY25 Prices and Specifications

Effective from 1st December 2024

E-DUCATO & DUCATO

MY25 Prices and Specifications

Model Trims

 Click the trim names to compare features.

Panel Van >

Ducato Panel Van models include:

COMFORT & CONVENIENCE

- Air Conditioning (Manual on Diesel, Automatic on Electric)
- Rear parking sensors
- Cruise control with variable speed limiter (Diesel)
- Two cup holders and mobile phone storage in centre of lower dashboard
- Twin lens door mirrors with electrically adjustable and heated upper mirror
- Electric Parking Brake (Electric)

TECHNOLOGY & INFOTAINMENT

- 5" DAB Radio Bluetooth® USB (Diesel)
- 7" DAB Radio Bluetooth® USB (Electric)
- Full 7" Digital Cluster (Electric)

EXTERIOR


- Side rubbing strips
- Steel wheels with centre cap
- Twin rear doors, opening 180°
Unglazed on panel van, glazed on window van
- Nearside sliding side loading door.
Unglazed on panel van, glazed on window van
- Glazing to row 2, 3 and nearside sliding side loading door (Window Van)
- Aerodynamic kit: Central Spoiler, Air Guides, Active Grille Shutter

SAFETY/SECURITY

- Driver's airbag
- Double passenger airbag
- Fixed full height steel bulkhead
- Advanced Emergency Braking System (AEBS) - Pedestrian and Cyclist
- Lane Support System
- Traffic Sign Recognition
- Driver Drowsiness Detection
- Intelligent Speed Assist
- Tyre Pressure Monitoring System (TPMS)
- Fix and go kit
- Dead locks
- Perimeter alarm



Model Trims

 Click the trim names to compare features.

Ducato Chassis / Platform Cab models include:

COMFORT & CONVENIENCE

- Air Conditioning (Manual on Diesel, Automatic on Electric)
- Cruise control with variable speed limiter (Diesel)
- Two cup holders and mobile phone storage in centre of lower dashboard
- Twin lens door mirrors with electrically adjustable and heated upper mirror
- Electric Parking Brake (Electric)

TECHNOLOGY & INFOTAINMENT

- 5" DAB Radio Bluetooth® USB (Diesel)
- 7" DAB Radio Bluetooth® USB (Electric)
- Full 7" Digital Cluster (Electric)

EXTERIOR

- Steel wheels with centre cap
- Aerodynamic kit: Central Spoiler, Air Guides, Active Grille Shutter

SAFETY/SECURITY


- Electronic stability control (ESC)
- Driver's airbag
- Double passenger airbag
- Advanced Emergency Braking System (AEBS) - Pedestrian and Cyclist
- Lane Support System
- Traffic Sign Recognition
- Driver Drowsiness Detection
- Intelligent Speed Assist
- Tyre Pressure Monitoring System (TPMS)
- Fix and go kit
- Dead locks
- Perimeter alarm

CONVERSIONS

- Electrical interface supply socket
- Special order electrics - loom extension
- Exclusion of the rear cab bulkhead (Platform Cab)



Model Trims

 Click the trim names to compare features.

Primo Panel Van models include:

COMFORT & CONVENIENCE

- Electric Folding Mirrors
- Keyless Entry and Go
- Digital Rearview Mirror
- Electric Parking Brake
- Automatic Climate Control
- 360° Perimeter Parking Sensors
- Blind Spot Assist and Rear Cross Path Detection
- Rain and Dusk Sensors and High Beam Recognition
- Full LED Headlamps
- Fog Lights with Cornering Function
- Cruise control with variable speed limiter (Diesel)
- 230V Socket
- Two cup holders and mobile phone storage in centre of lower dashboard
- Electric twin lens door mirrors with electrically adjustable and heated upper mirror

TECHNOLOGY & INFOTAINMENT

- 10" Touchscreen Radio NAV (TomTom) with Bluetooth®, Android Auto™, Apple CarPlay™ (AA/CP), Double USB Charging Port (x1 A Type & x1 C Type), Automatic Climate Control, Connected Services (6mnths subscription included), Wireless Charger, Full Digital Cockpit
- Double USB Charging Ports
- Wireless Charger
- Full 7" Digital Cluster

INTERIOR

- Chromed Air vents
- Leather Steering Wheel
- Compartment under driver's seat
- Upgraded Seat Trim

EXTERIOR

- Side rubbing strips
- Steel wheels with covers (Diesel)
- Twin unglazed rear doors (opening to 180°)
- Nearside sliding side loading door
- Twin glazed rear doors (opening to 180°) (Window Van)
- Glazing to row 2, 3 and nearside sliding side loading door (Window Van)
- Aerodynamic kit: Central Spoiler, Air Guides, Active Grille Shutter

SAFETY/SECURITY

- Driver's airbag
- Double passenger airbag
- Fixed full height steel bulkhead
- Advanced Emergency Braking System (AEBS) - Pedestrian and Cyclist
- Lane Support System
- Traffic Sign Recognition
- Driver Drowsiness Detection
- Intelligent Speed Assist
- Tyre Pressure Monitoring System (TPMS)
- Fix and go kit
- Dead locks
- Perimeter alarm



Prices

IMPORTANT NOTE RE: CONVERSIONS

Any vehicle ordered (including panel vans) for a conversion that changes the base vehicle type approval must be aligned to a Stellantis Certified Converter within Convertool by entering the associated vehicle order number. Please note that if the vehicle order number is not inputted into Convertool then the order/s will be cancelled. It is also important that you discuss your conversion project with the converter before ordering the base vehicle.

<https://convertool-xf.stellantis.com/#/login/fiat>

	Version Code	Vehicle Classification (NI 3500kg GVW N2 4250kg GVW)	Maximum Indicative Payload (kg)	Load Space (m ³)	Gross Vehicle Weight (kg)	WLTP Combined Electric Range (Miles)	Basic MRRP	OTR RRP before PIVG* exc. VAT	OTR RRP after PIVG* exc. VAT
PANEL VANS									
E-Ducato Van 35 L3H2 272PS 110kWh Auto MY25	505.BG1.2	N1	710	13	3,500	235	£49,485	£50,535	£45,535
E-Ducato Van 40 L3H2 272PS 110kWh Auto MY25	505.GG1.2	N2	1,460	13	4,250	263	£50,295	£51,345	£46,345
E-Ducato Van 40 L3H3 272PS 110kWh Auto MY25	505.GA1.2	N2	1,435	15	4,250	254	£51,105	£52,155	£47,155
E-Ducato Van 40 L4H2 272PS 110kWh Auto MY25	505.HG1.2	N2	1,415	15	4,250	262	£51,105	£52,155	£47,155
E-Ducato Van 40 L4H3 272PS 110kWh Auto MY25	505.HA1.2	N2	1,385	17	4,250	252	£51,915	£52,965	£47,965
WINDOW VANS									
E-Ducato Window Van 40 L4H2 272PS 110kWh Auto MY25	505.HH1.2	N2	1,415	15	4,250	262	£51,555	£52,605	£47,605
CHASSIS VANS									
E-Ducato Chassis Cab 40 L3H1 272PS 110kWh Auto MY25	505.GC1.2	N2	1,770	TBC	4,250	N/A	£47,865	£48,915	£43,915

* Plug-in Van Grant

On The Road (OTR) charge includes delivery to dealer and number plates (£995.00 excl. VAT), VAT on delivery charges and number plates (£139.00), First-Year Vehicle Tax (£0.00 for Electric) and vehicle First Registration Fee (£55.00).

Total Estimated OTR Price includes delivery to the dealer premises, PIVG, first registration fee (incl. VAT), (N1) and (N2) Government applied Plug-in Van Grant (referred to as 'Government Incentive') of 35% up to a maximum of £5,000 has been applied to E-Ducato purchase price subject to Government Grant approval. Grant incentive shown is for representative purpose only and is based in this example on the manufacturers total price (subject to change). Please check with your local retailer or fleet sales representative to ensure that the grant calculation is applied to the final purchase price.

Basic Price less PIVG is the basic price with the deduction of the 'Government' incentive excl. VAT. VAT is charged on the basic price, prior to the deduction of the 'Government Incentive'.



Prices

IMPORTANT NOTE RE: CONVERSIONS

Any vehicle ordered (including panel vans) for a conversion that changes the base vehicle type approval must be aligned to a Stellantis Certified Converter within Converttool by entering the associated vehicle order number. Please note that if the vehicle order number is not inputted into Converttool then the order/s will be cancelled. It is also important that you discuss your conversion project with the converter before ordering the base vehicle.

<https://converttool-xf.stellantis.com/#/login/fiat>

	Version Code	Vehicle Classification (NI 3500kg GVW/N2 4250kg GVW)	Maximum Indicative Payload (kg)	Load Space (m ³)	Gross Vehicle Weight (kg)	WLTP CO ₂ (g/km)	Basic MRRP	OTR RRP exc. VAT
PANEL VANS								
Ducato Van 35 L2H1 Multijet3 2.2 140PS S&S Manual MY25	290.AL3.2	NI	1,500	10	3,500	169-240	£31,105	£32,490
Ducato Van 35 L2H2 Multijet3 2.2 140PS S&S Manual MY25	290.AG3.2	NI	1,475	11.5	3,500	169-240	£31,915	£33,300
Ducato Van 35 L2H2 Multijet3 2.2 140PS S&S Auto MY25	290.AG4.2	NI	1,415	11.5	3,500	183-320	£34,015	£35,400
Ducato Van 35 L3H2 Multijet3 2.2 140PS S&S Manual MY25	290.BG3.2	NI	1,425	13	3,500	169-240	£32,725	£34,110
Ducato Van 35 L3H2 Multijet3 2.2 140PS S&S Auto MY25	290.BG4.2	NI	1,365	13	3,500	183-320	£34,825	£36,210
Ducato Van 35 L3H3 Multijet3 2.2 140PS S&S Manual MY25	290.BA3.2	NI	1,400	15	3,500	169-240	£33,535	£34,920
Ducato Van 35 L2H2 Multijet3 2.2 140PS S&S Manual Primo MY25	290.AG3.2PRI	NI	1,475	11.5	3,500	169-240	£35,415	£36,800
Ducato Van 35 L2H2 Multijet3 2.2 140PS S&S Auto Primo MY25	290.AG4.2PRI	NI	1,415	11.5	3,500	183-320	£36,225	£37,610
Ducato Van 35 L3H2 Multijet3 2.2 140PS S&S Manual Primo MY25	290.BG3.2PRI	NI	1,425	13	3,500	169-240	£37,515	£38,900
Ducato Van 35 L3H2 Multijet3 2.2 140PS S&S Auto Primo MY25	290.BG4.2PRI	NI	1,365	13	3,500	183-320	£38,325	£39,710
WINDOW VANS								
Ducato Window Van 35 L3H2 Multijet3 2.2 140PS S&S Manual MY25	290.BH3.2	NI	1,425	13	3,500	169-240	£33,175	£34,560
CHASSIS CAB								
Ducato Chassis Cab 35 L2H1 Multijet 2.2 140PS S&S Manual MY25	290.AC3.2	NI	1,785	-	3,500	177-310	£29,755	£31,140
Ducato Chassis Cab 35 L3H1 Multijet 2.2 140PS S&S Manual MY25	290.BC3.2	NI	1,735	-	3,500	177-310	£30,295	£31,680
PLATFORM CAB								
Ducato Platform Cab 35 L3H1 Multijet 2.2 140PS S&S Manual MY25	290.BC3.2	NI	1,760	-	3,500	177-310	£30,295	£31,680
BACK TO BACK								
Ducato Back to Back 35 Multijet3 2.2 140PS S&S Manual MY25	290.DC3.2	NI	1,565	-	3,500	N/A	£29,485	£30,870

On The Road (OTR) charge includes delivery to dealer and number plates (£995.00 excl. VAT), VAT on delivery charges and number plates (£139.00), First-Year Vehicle Tax and vehicle First Registration Fee (£55.00). Total Estimated OTR Price includes Basic Price and OTR charge (incl. VAT).



Prices

IMPORTANT NOTE RE: CONVERSIONS

Any vehicle ordered (including panel vans) for a conversion that changes the base vehicle type approval must be aligned to a Stellantis Certified Converter within Convertool by entering the associated vehicle order number. Please note that if the vehicle order number is not inputted into Convertool then the order/s will be cancelled. It is also important that you discuss your conversion project with the converter before ordering the base vehicle.

<https://convertool-xf.stellantis.com/#/login/fiat>

	Version Code	Vehicle Classification (NI 3500kg GVW N2 4250kg GVW)	Maximum Indicative Payload (kg)	Load Space (m ³)	Gross Vehicle Weight (kg)	WLTP CO ₂ (g/km)	Basic MRRP	OTR RRP exc. VAT
PANEL VANS								
Ducato Van Maxi 35 L3H2 Multijet3 2.2 140PS S&S Manual MY25	295.BG3.2	N1	1,310	13	3,500	169-244	£33,175	£34,560
Ducato Van Maxi 35 L4H2 Multijet3 2.2 140PS S&S Manual MY25	295.CG3.2	N1	1,265	15	3,500	169-244	£33,985	£35,370
Ducato Van Maxi 35 L4H3 Multijet3 2.2 140PS S&S Manual MY25	295.CA3.2	N1	1,235	17	3,500	169-244	£34,795	£36,180
Ducato Van Maxi 40 L4H3 Multijet3 2.2 180PS S&S Manual MY25 (FLEET)	295.HA5.2	N2	2,015	17	4,250	192-321	£37,005	£38,220
Ducato Van Maxi 40 L4H3 Multijet3 2.2 180PS S&S Auto MY25 (FLEET)	295.HA6.2	N2	2,000	17	4,250	199-355	£39,105	£40,320
Ducato Van Maxi 40 L4H2 Multijet3 2.2 180PS S&S Auto MY25	295.HG6.2	N2	2,030	15	4,250	199-355	£38,295	£39,510
WINDOW VANS								
Ducato Window Van Maxi 40 L4H2 Multijet3 2.2 140PS S&S Manual MY25	295.HH3.2	N2	2,050	15	4,250	169-244	£35,245	£36,460
CHASSIS CABS								
Ducato Chassis Cab Maxi 35 L2H1 Multijet3 2.2 140PS S&S Manual MY25	295.AC3.2	N1	1,695	10	3,500	177-310	£30,205	£31,590
Ducato Chassis Cab Maxi 35 L3H1 Multijet3 2.2 140PS S&S Manual MY25	295.BC3.2	N1	1,675	-	3,500	177-310	£30,745	£32,130
CHASSIS CREW CABS								
Ducato Chassis Crew Maxi 35 L3H1 Multijet3 2.2 140PS S&S Manual MY25	295.BD3.2	N1	1,460	-	3,500	177-310	£32,095	£33,480
PLATFORM CABS (ORDER WITH OPTION 292)								
Ducato Platform Cab Maxi 35 L3H1 Multijet3 2.2 140PS S&S Manual MY25	295.BC3.2	N1	1,700	-	3,500	177-310	£30,745	£32,130
BACK TO BACK								
Ducato Back to Back Maxi 40 Multijet3 2.2 180PS S&S Auto MY25	295.JC6.2	N2	2,315	-	4,250	305-305	£34,245	£35,460

On The Road (OTR) charge includes delivery to dealer and number plates (£995.00 excl. VAT), VAT on delivery charges and number plates (£139.00), First-Year Vehicle Tax and vehicle First Registration Fee (£55.00).

Total Estimated OTR Price includes Basic Price and OTR charge (incl. VAT).



Equipment

● Standard Equipment ○ Optional P Optional as part of pack

	Ducato Panel	Primo Panel	Ducato Chassis / Platform Cab
COMFORT AND CONVENIENCE			
Air conditioning (Manual on Diesel, Automatic on Electric)	●		●
Automatic Climate Control (Diesel and Electric)	P	●	P
Rear parking sensors	●	●	
Front electric windows	●	●	●
Twin lens door mirrors with electrically adjustable and heated upper mirror	●		●
Electric folding twin lens door mirrors with electrically adjustable and heated upper mirror	P	●	P
Cruise control with variable speed limiter (not available on Electric or 440 versions)	●	●	●
Two cup holders and mobile phone storage in centre of lower dashboard	●	●	●
Electric Parking Brake	Electric only	●	Electric only
Keyless Entry and Go	P	●	P
230V Socket	P	●	P
Electric Power Steering	●	●	●
City Plus Pack: Blind Spot Assist and Rear Cross Path Detection, Electric Folding Mirrors, 360° Perimeter Parking Sensors, Digital Rearview Mirror	P	●	P
INTERIOR			
6-Way Driver's Seat with Lumbar & Armrest	●	●	●
Driver's seat armrest	●	●	●
Dual Passenger Benchseat	●	●	●
Premium trim	P	●	
TECHNOLOGY AND ENTERTAINMENT			
5" DAB Radio Bluetooth® USB (Diesel)	●		●
7" DAB Radio Bluetooth® USB (Electric)	●		●
Techno Plus Pack: 10" Touchscreen Radio NAV (TomTom) with Bluetooth®, Android Auto™, Apple CarPlay™ (AA/CP), Double USB Charging Port (x1 A Type & x1 C Type), Automatic Climate Control, Connected Services (6mnths subscription included), Wireless Charger, Full Digital Cockpit	P	●	P
Full 7" Digital Cluster	Electric only	●	Electric only
Connected Services	Electric only	●	Electric only
EXTERIOR			
Side rubbing strips	●	●	
Steel wheels with centre cap	●		●

Equipment

● Standard Equipment ○ Optional P Optional as part of pack

	Ducato Panel	Primo Panel	Ducato Chassis / Platform Cab
Steel wheels with covers (Diesel)		●	
Twin unglazed rear doors (opening to 180° - Panel Van)	●	●	●
Nearside sliding side loading door	●	●	●
Aerodynamic kit: Central Spoiler, Air Guides, Active Grille Shutter	●	●	●
Fixed full width steel bulkhead	●	●	●
SAFETY			
Remote control central deadlocking with immobiliser	●	●	●
Electronic stability control (ESC)	●	●	●
Driver's airbag	●	●	●
Double passenger airbag	●	●	●
Dead locks	●	●	●
Fix and go kit	●	●	●
Perimeter alarm	●	●	●
Rear visibility camera with dynamic gridlines	P	●	P
Tyre Pressure Monitoring System (TPMS)	●	●	●
Advanced Emergency Braking System (AEBS)	●	●	●
Lane Support System	●	●	●
Traffic Sign Recognition	●	●	●
Driver Drowsiness Detection	●	●	●
Intelligent Speed Assist	●	●	●
Global Telematics Box	●	●	●
Visibility Plus Pack: Rain and Dusk Sensors and High Beam Recognition, Fog Lights with Cornering Function, Full LED Headlamps	P	●	P
CONVERSIONS			
Electrical interface supply socket			●
Special order electrics - loom extension			●
Exclusion of the rear cab bulkhead (Platform Cab)			●
WINDOW VANS			
Twin glazed rear doors (opening to 180°)	●		
Glazing to row 2, 3 and nearside sliding side loading door	●		

Safety Features



Digital Rearview Camera*

- The digital rearview camera comes as a further help when driving and parking vans.
- The central 8,9" LCD high-resolution display provides an unobstructed and ultra-clear view of the road behind, thanks to a wide-angle, high-definition camera located inside the rear third stop lamp.
- Ability to function both as a digital LCD display or a standard optical rearview mirror.
- Auto-dimming, activation and brightness control by buttons located on mirror.



360° Perimeter Parking Sensors*

- The 360° Perimeter Parking Sensors alert the driver both acoustically, and visually when the vehicle is approaching obstacles or going through tight spaces.
- Depending on vehicle length there are either 14, or 16 sensors surrounding the vehicle. These are located on the front and rear bumpers and also within the side mouldings.
- Visual warning is displayed on the cluster screen by the vehicle shape surrounded by three proximity bands, showing the vehicle distance from obstacles, while the acoustic (beep) warning increases in frequency as the obstacle comes nearer, becoming a continuous beep as the obstacle distance is lower than 30 centimeters.

Note: Fiat Pro driver assistance systems are intended to support the driver within the system-imminent limitations. The driver remains responsible for the driving task at all times.

*Option available at additional cost

** Standard on on N2 models

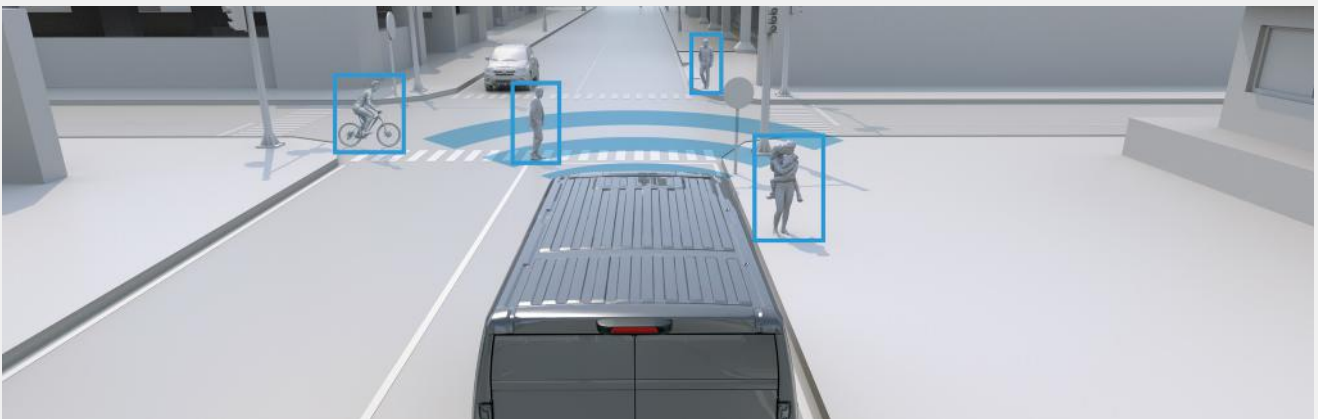


Blind Spot Information System (BSIS)**

Audio and visual warnings will alert the driver in case the vehicle approaches an obstacle or has to go through narrow spaces. The audible warning will keep beeping with increased intensity as the obstacle is nearing and will decrease as soon as the obstacle is out of reach.

Moving Off Information System (MOIS)**

The Moving off information system and Blind spot information systems works together in order to allow the recognition of side obstacles inside the blind side area opposite to driver's position. Driver is alerted by a visual warning on cluster and the mirrors, when approaching obstacles located into the blind lateral area.



Advanced Emergency Braking System (AEBS)

This system alerts the driver of a potential collision through a combination of visual and then audible warnings. Should the driver fail to react, autonomous emergency braking is triggered to help mitigate/avoid the impact by reducing the speed of the vehicle. AEBS provides additional assistance to optimise braking performance while a dynamic brake support function boosts pressure to help further minimise stopping distances.

Options

● Standard Equipment – Not Available

	Option Code	Panel	Window	Chassis Cab	Back to Back	Linked Options	Incompatible options	Comments
DOORS AND WINDOWS								
Glazed sliding side door	520	£230	●	–	–		070	Not available on L2HI Panel Vans
2nd sliding side door (unglazed)	055	£410	£410	–	–		070	
Sliding side door (Glazed both sides)	520 + 055	£640	£640	–	–			
Sliding Glass in Sliding Doors	644	–	£320	–	–			
Privacy side windows	070	£270	£270	–	–	520 519 029 AWE		Not available on L2HI Panel Vans
270° degree opening rear doors	619	£270	£270	–	–			
WHEELS, TYRES AND SUSPENSION								
Double Leaf Rear Suspension (Diesel)	077	–	–	£110	–			Diesel only Standard on N2 Diesel
Full wheel hub caps	878	£90	£90	£90	£90			Diesel only Standard on Primo
INTERIOR								
Smart tachograph	0TK	£630	£630	£630	£630	835		Standard on N2 versions
Glazed bulkhead	199	£140	£140	–	–			
Front side air bags & window bags	505	£540	£540	£540	–	297 454 835 AW5 CJ1		Not available on Chassis Crew Cab
Additional Plip key with remote control	4YV	£50	£50	£50	£50		AW5	
EXTERIOR								
Fixed towing hook	6JA	£500	£500	£500	–			Diesel only

Options

● Standard Equipment – Not Available

	Option Code	Panel	Window	Chassis Cab	Back to Back	Linked Options	Incompatible options	Comments
CONVERSIONS AND FLEET ONLY								
External rear-view mirrors for body size kit 2.35m	042	-	-	£140	-			
Single Passenger Seat inc Armrest & Lumbar Adjustment	297 + 454	£50	£50	£50	£50	CJ1		
Loose Rear Lights	4EA	-	-	£100	-			
Oversized rear suspensions	4GM	-	-	£270	-		077	Diesel only
Twin Glazed Rear Doors	519 + 029	£230	●	-	-	029 AWE		Not available on L2H1 Panel Vans
Capucine shelf exclusion	55Q	£0	£0	£0	£0	0TL		
Speed limiter (56mph)	58E	£0	£0	£0	£0		5BF	Standard on N2 versions
Speed limiter (62 mph)	5BF	-	£0	-	-		58E	Available on N2 Diesel versions only
Exclusion speed limiter	4XH	-	£0	-	£0	0TL		Available on N2 versions only
Smart tachograph exclusion	0TL	-	£0	-	£0	4XH		Available on N2 versions only
Special Order Electrics - Loom extension	391	-	-	£50	£50			
Remove bulkhead*	72X	£150	£150	-	-	C7B +8RS / AW5		Only available if ordered with Premium Cab Pack
DAB radio antenna integrated in right external mirror	54Q	£130	£130	£130	£130			

*On ICE versions this brings in FC05 Electric Handbrake which means that BUFX Premium Cab Pack must be ordered. On BEV versions upgraded trim and FC05 are already standard so there is no charge for omission of bulkhead.

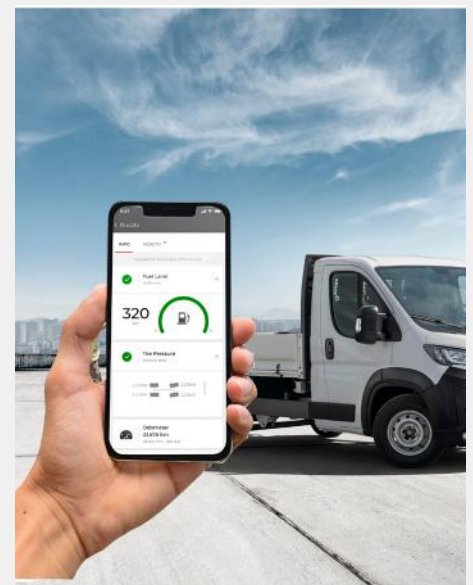
Options

● Standard Equipment – Not Available

	Option Code	Panel	Window	Chassis Cab	Back to Back	Linked Options	Incompatible options	Comments
WORK PACKS								
Worksite Heavy Pack: - Traction Plus - M&S All-season 3PMSF Tyres - Double Leaf Rear Suspension - Spare Wheel Winch - Spare Wheel - Wheelarch Moulding	AVU	£770	-	£770	-			Available on N1 Heavy ICE only
Cargo Pack: - 12v socket cargo area - 270° Rear opening doors - Rear/Sliding Door activated Central LED in Cargo Area	C7F	£320	-	-	-			Not available on L2H1 models
Conversion Pack: - Transformation socket - 220A alternator - 105Ah battery	AWE	£230	●	●	●			ICE only
SAFETY PACKS								
City Plus Pack: - Blind spot assist + rear cross path detection - Electric folding wing mirrors - 360° Perimeter parking sensors - Digital rearview mirror	AW8	£1,080	£1,080	-	-			Standard on Ducato Primo
TECHNOLOGY PACKS								
Techno Plus Pack: - 10" Touchscreen Radio NAV (TomTom) AA/CP - Automatic Climate Control - Connected Services - Double USB Charging Port (x1 A Type & x1 C Type) - Wireless Charger - Full Digital Cockpit	AWA	£1,530	£1,530	£1,530	£1,530			Standard on Ducato Primo Available on ICE versions only
Handsfree Pack: - Keyless entry and go - Electric parking brake - 230v socket	AW5	£450	£450	£450	-			Standard on Ducato Primo Available on ICE only
Handsfree & Camera Pack – BEV only: - Rearview Camera - Keyless Entry & Go - Wireless Charger - Double USB Charging Port (x1 A Type & x1 C Type)	C8S	£690	£690	-	-			
STYLE PACKS								
Premium Cab Pack - Rearview Camera - Chromed air vents - Leather steering wheel - Compartment under driver's seat	C7B + 8RS	£350	£350	-	-			Available on ICE only Standard on Ducato Primo ICE

● Standard Equipment – Not Available

	Option Code	Panel	Window	Chassis Cab	Back to Back	Linked Options	Incompatible options	Comments
STYLES PACKS								
Style & Visibility Plus Pack: - Painted front bumpers - Black skid plates - 16" alloy diamond black wheels - Rain & dusk sensors + high beam recognition - Fog lights with cornering function - Full LED headlamps	AYP							Available on NI ICE Light Manual variants only
	+ 38C	£1,350	£1,350	£1,350	£1,350			
Style & Visibility Plus Pack: - Painted front bumpers - Black skid plates - 16" alloy diamond black wheels - Rain & dusk sensors + high beam recognition - Fog lights with cornering function - Full LED headlamps	AYQ							Available on NI Auto and/or Heavy versions only
	+ 38C	£1,350	£1,350	£1,350	£1,350			



Colours



Wheels



**15" steel wheels
with half
wheel cover**

Standard on Ducato



**15" steel wheels
with fullsize
wheel cover**

Standard on Primo Diesel



**16" steel wheels
with fullsize
wheel cover**



16" alloy wheels

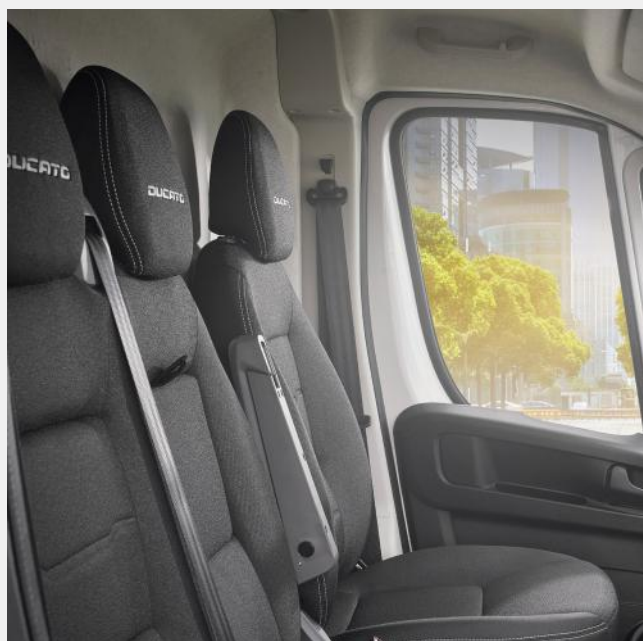
Optional via
Style Black Pack

Interiors

**Standard Trim
"Crepe" black
with single
stitches and
fabric headrest**



**Premium Trim "Crepe" black with
backrest graphic. Double silver side
stitches and Fabric headrest
076 + 8RS**



Technical

Electric Engine

Battery Electric Vehicle 110kWh

MOTOR

Torque	410Nm
Max power CEE	205kW (279PS)
Battery Capacity	95ah
Operating voltage	400V
Number of cells	180

TRANSMISSION

Gearbox	Automatic electric drive with fixed gear ratio
---------	------------------------------------------------

SERVICE

Every 1 Year or 16,000 miles whichever comes first

BATTERY WARRANTY

8 years / 100,000 miles / 70% capacity

CHARGING TIMES

Single Phase Wallbox (7.4kW) - Type 2 Socket	16h 40m (100%)
Three Phase Wallbox (11kW) - Type 2 Socket	11h 45m (100%)
Rapid (DC) Charging (150 kW) - CCS Socket	55m (5 to 80%)

PERFORMANCE

35 VARIANTS

40 VARIANTS

	L3H2	L3H2	L3H3	L4H2	L4H3
Combined Range (miles)	235	263	254	262	252
Max speed (mph)*	81	56	56	56	56
Acceleration (0-62 mph, 0-56mph for N2)	10 sec	N/A	N/A	N/A	N/A

* All N2 vehicles are legally required to be speed limited to 56mph.

Legal Notice:

As all E-Ducato vans are homologated as Heavy and are not subject to WLTP testing, the range and electric consumption figures mentioned are calculated using WLTP Test Procedure methodology, on which the basis of all new Light Commercial or Passenger vehicles up to a GVW of 3500kgs are type approved, from 1 September 2018. The figures may vary depending on actual conditions of use and on differing factors such as: speed, thermal comfort on board the vehicle, driving style and outside temperature. The charging time depends in particular; on the power of the charger on board the vehicle, the charging cable and the type of cable used. Please contact your dealer or refer to www.fiatprofessional.com/uk for further information.

Electric Range

	WLTP Combined (calculated)			WLTP City (calculated)		
	Electric Range (KM)	Electric Range (Miles)	Electric Energy Consumption (Wh/km)	Electric Range (KM)	Electric Range (Miles)	Electric Energy Consumption (Wh/km)
ELECTRIC						
E-Ducato Van 35 L3H2 272PS 110kWh Auto MY25	378	235	294	537	334	207
E-Ducato Van 40 L3H2 272PS 110kWh Auto MY25	424	263	262	504	313	220
E-Ducato Van 40 L3H3 272PS 110kWh Auto MY25	409	254	271	488	303	227
E-Ducato Van 40 L4H2 272PS 110kWh Auto MY25	422	262	263	501	311	222
E-Ducato Van 40 L4H3 272PS 110kWh Auto MY25	406	252	273	491	305	226
E-Ducato Window Van 40 L4H2 272PS 110kWh Auto MY25	422	262	263	501	311	222
E-Ducato Chassis Cab 40 L3H1 272PS 110kWh Auto MY25	N/A*	N/A*	N/A*	N/A*	N/A*	N/A*

Actual range and consumption will depend on payload, weather, driving conditions, driving styles etc. and these published figures can only be used as a guide.

*Chassis figures are subject to the weight of the conversion fitted.

Fuel consumption and CO2 figures are provided for comparative purposes only and may not reflect real life driving results, which will depend upon a number of factors including the accessories fitted (post-registration), variations in weather, driving styles and vehicle load. Only compare fuel consumption and CO2 figures with other vehicles tested to the same technical procedure.

These figures were obtained after the battery had been fully charged. The E-Ducato is a battery electric vehicle requiring mains electricity for charging. Figures shown are for comparability purposes. Only compare fuel consumption, CO2 and electric range figures with other vehicles tested to the same technical procedures. Values may not reflect real life driving results, which will depend upon a number of factors including the starting charge of the battery, accessories fitted (post-registration), variations in weather, driving styles and vehicle load.

Technical

Diesel Engine

	2.2 140PS S&S	2.2 180PS S&S
ENGINE		
Fuel system	Diesel: High pressure turbo-charged direct injection	
Capacity (cc)	2184	
Cylinders / Valves	4 / 16	
Max power CEE	103kW (140PS) / 3500rpm	132kW (180PS) / 3500rpm
Max torque CEE	Manual: 350Nm (258lb/ft) / 1400rpm Auto: 380Nm (280lb/ft) / 1400rpm	Auto: 450Nm (332lb/ft) / 1500rpm
Bore and stroke (mm)	83.8 bore, 99 stroke	
Euro status	Euro 6.4	
Stop & Start system	✓	
Servicing	'Every 2 Years or 32,000 miles, whichever comes first	
TRANSMISSION		
Gearbox	Manual / Automatic	
Number of gears	Manual: 6 Auto: 8	
Driven wheels	Front	
SUSPENSION		
Front	Pseudo-Macpherson type with lower wishbone struts, coil springs, telescopic hydraulic dampers and anti-roll bar	
Rear	Longitudinal leaf springs with telescopic hydraulic dampers (reinforced twin leaf on 4.0 Tonne GVW versions)	
BRAKES		
Front	Ventilated discs	
Rear	Discs	
TANK CAPACITY		
Fuel tank capacity Litres (gallons)	90 (19.8)	
AdBlue tank capacity Litres	18.6	

BlueHDI vehicles will need regular AdBlue® top-ups between servicing requirements. An indicator integrated into the on-board computer will warn you when you need to top-up.

CO₂ & Fuel Economy

	CO ₂ Combined		WLTP Economy Combined			
	Low (g/km)	High (g/km)	Low (l/100km)	High (l/100km)	Low (mpg)	High (mpg)
DIESEL LIGHT						
Ducato Van 35 L2H1 Multijet3 2.2 140PS S&S Man MY25	169	240	6.4	9.1	44.0	31.0
Ducato Van 35 L2H2 Multijet3 2.2 140PS S&S Man MY25	169	240	6.4	9.1	44.0	31.0
Ducato Van 35 L2H2 Multijet3 2.2 140PS S&S Auto MY25	183	320	7.0	12.2	40.6	23.2
Ducato Van 35 L3H2 Multijet3 2.2 140PS S&S Man MY25	169	240	6.4	9.1	44.0	31.0
Ducato Van 35 L3H2 Multijet3 2.2 140PS S&S Auto MY25	183	320	7.0	12.2	40.6	23.2
Ducato Van 35 L3H3 Multijet3 2.2 140PS S&S Man MY25	169	240	6.4	9.1	44.0	31.0
Ducato Van 35 L2H2 Multijet3 2.2 140PS S&S Man Primo MY25	169	240	6.4	9.1	44.0	31.0
Ducato Van 35 L3H2 Multijet3 2.2 140PS S&S Man Primo MY25	169	240	6.4	9.1	44.0	31.0
Ducato Van 35 L2H2 Multijet3 2.2 140PS S&S Auto Primo MY25	183	320	7.0	12.2	40.6	23.2
Ducato Van 35 L3H2 Multijet3 2.2 140PS S&S Auto Primo MY25	183	320	7.0	12.2	40.6	23.2
Ducato Window Van 35 L3H2 Multijet3 2.2 140PS S&S Man MY25	169	240	6.4	11.9	44.0	23.7
Ducato Chassis Cab 35 L2H1 Multijet3 2.2 140PS S&S Man MY25	177	310	6.7	11.8	42.0	24.0
Ducato Chassis Cab 35 L3H1 Multijet3 2.2 140PS S&S Man MY25	177	310	6.7	11.8	42.0	24.0
Ducato Platform Cab 35 L3H1 Multijet3 2.2 140PS S&S Man MY25	177	310	6.7	11.8	42.0	24.0
DIESEL MAXI						
Ducato Van Maxi 35 L3H2 Multijet3 2.2 140PS S&S Man MY25	169	244	6.4	9.3	44.0	30.4
Ducato Van Maxi 35 L4H2 Multijet3 2.2 140PS S&S Man MY25	169	244	6.4	9.3	44.0	30.4
Ducato Van Maxi 35 L4H3 Multijet3 2.2 140PS S&S Man MY25	169	244	6.4	9.3	44.0	30.4
Ducato Van Maxi 40 L4H3 Multijet3 2.2 180PS S&S Man MY25	192	321	7.3	12.2	38.8	23.1
Ducato Van Maxi 40 L4H3 Multijet3 2.2 180PS S&S Auto MY25	199	355	7.6	13.5	37.4	20.9
Ducato Van Maxi 40 L4H2 Multijet3 2.2 180PS S&S Auto MY25	199	355	7.6	13.5	37.4	20.9
Ducato Window Van Maxi 40 L4H2 Multijet3 2.2 140PS S&S Man MY25	169	244	7.3	11.9	38.8	23.7
Ducato Chassis Cab Maxi 35 L2H1 Multijet3 2.2 140PS S&S Man MY25	177	310	6.7	11.8	42.0	24.0
Ducato Chassis Cab Maxi 35 L3H1 Multijet3 2.2 140PS S&S Man MY25	177	310	6.7	11.8	42.0	24.0
Ducato Chassis Crew Cab Maxi 35 L3H1 Multijet3 2.2 140PS S&S Man MY25	177	310	6.7	11.8	42.0	24.0
Ducato Platform Cab Maxi 35 L3H1 Multijet3 2.2 140PS S&S Man MY25	177	310	6.7	11.8	42.0	24.0

Weights & Loads

	Gross Vehicle Weight (GVW) (kg)	Mass in Running Order (MIRO) (kg)	Kerb Weight (kg)	Maximum Payload (kg)	Max Plated Front Axle (kg)	Max Plated Rear Axle (kg)	Gross Train Weight (GTW) (kg)	Maximum Braked Towing Weight (kg)	Max. Unbraked Towing Weight (kg)	Maximum Towball Weight (kg)	Number of Seats	
ELECTRIC												
E-Ducato Van 35 L3H2 272PS 110kWh Auto MY25	3,500	2,865	2,790	710	2,100	2,400	5,500	2,400	750	100	3	
E-Ducato Van 40 L3H2 272PS 110kWh Auto MY25	4,250	2,865	2,790	1,460	2,100	2,400	5,500	2,400	750	100	3	
E-Ducato Van 40 L3H3 272PS 110kWh Auto MY25	4,250	2,890	2,815	1,435	2,100	2,400	5,500	2,400	750	100	3	
E-Ducato Van 40 L4H2 272PS 110kWh Auto MY25	4,250	2,910	2,835	1,415	2,100	2,400	5,500	2,400	750	100	3	
E-Ducato Van 40 L4H3 272PS 110kWh Auto MY25	4,250	2,940	2,865	1,385	2,100	2,400	5,500	2,400	750	100	3	
E-Ducato Window Van 40 L4H2 272PS 110kWh Auto MY25	4,250	2,910	2,835	1,415	2,100	2,400	5,500	2,400	750	100	3	
E-Ducato Chassis Cab 40 L3H1 272PS 110kWh Auto MY25	4,250	2,555	2,480	1,770	2,100	2,400	5,500	2,400	750	100	3	
DIESEL LIGHT												
Ducato Van 35 L2H1 Multijet3 2.2 140PS S&S Man MY25	3,500	2,075	2,000	1,500	1,880	2,000	6,000	2,500	750	100	3	
Ducato Van 35 L2H2 Multijet3 2.2 140PS S&S Man MY25	3,500	2,100	2,025	1,475	1,880	2,000	6,000	2,500	750	100	3	
Ducato Van 35 L2H2 Multijet3 2.2 140PS S&S Auto MY25	3,500	2,160	2,085	1,415	1,960	2,000	6,000	2,500	750	100	3	
Ducato Van 35 L3H2 Multijet3 2.2 140PS S&S Man MY25	3,500	2,150	2,075	1,425	1,880	2,000	6,000	2,500	750	100	3	
Ducato Van 35 L3H2 Multijet3 2.2 140PS S&S Auto MY25	3,500	2,210	2,135	1,365	1,960	2,000	6,000	2,500	750	100	3	
Ducato Van 35 L3H3 Multijet3 2.2 140PS S&S Man MY25	3,500	2,175	2,100	1,400	1,880	2,000	6,000	2,500	750	100	3	
Ducato Van 35 L2H2 Multijet3 2.2 140PS S&S Man Primo MY25	3,500	2,100	2,025	1,475	1,880	2,000	6,000	2,500	750	100	3	
Ducato Van 35 L3H2 Multijet3 2.2 140PS S&S Man Primo MY25	3,500	2,150	2,075	1,425	1,880	2,000	6,000	2,500	750	100	3	
Ducato Van 35 L2H2 Multijet3 2.2 140PS S&S Auto Primo MY25	3,500	2,160	2,085	1,415	1,960	2,000	6,000	2,500	750	100	3	
Ducato Van 35 L3H2 Multijet3 2.2 140PS S&S Auto Primo MY25	3,500	2,210	2,135	1,365	1,960	2,000	6,000	2,500	750	100	3	

Kerb weight is affected by many factors such as bodystyles, engines and options. It is the weight of a standard-specification base series vehicle, including fluids and approximately 10 litres of fuel. It includes the driver at 75kg. It does not include the crew or cargo.

Payload within this guide is the difference between gross vehicle weight (GVW) and kerb weight. It must be taken into account that actual weight will always be subject to manufacturing tolerances which may result in payload variations between this guide and actual weight. For customers intending to load the vehicle close to the maximum payload, we recommend you also add 5% of kerb mass to the kerb weight figure to reduce the risk of overloading NB: It is the responsibility of the vehicle operator to ensure their vehicle is legally compliant for road use.

Weights & Loads*

	Gross Vehicle Weight (GVW) (kg)	Mass in Running Order (MIRO) (kg)	Kerb Weight (kg)	Maximum Payload (kg)	Max Plated Front Axle (kg)	Max Plated Rear Axle (kg)	Gross Train Weight (GTW) (kg)	Maximum Braked Towing Weight (kg)	Max. Unbraked Towing Weight (kg)	Maximum Towball Weight (kg)	Number of Seats
DIESEL LIGHT											
Ducato Window Van 35 L3H2 Multijet3 2.2 140PS S&S Man MY25	3,500	2,150	2,075	1,425	1,880	2,000	6,000	2,500	750	100	3
Ducato Chassis Cab 35 L2H1 Multijet3 2.2 140PS S&S Man MY25	3,500	1,840	1,765	1,735	1,850	2,000	6,000	2,500	750	100	3
Ducato Chassis Cab 35 L3H1 Multijet3 2.2 140PS S&S Man MY25	3,500	1,860	1,785	1,785	1,850	2,000	6,000	2,500	750	100	3
Ducato Platform Cab 35 L3H1 Multijet3 2.2 140PS S&S Man MY25	3,500	1,835	1,760	1,760	1,850	2,000	6,000	2,500	750	100	3
DIESEL MAXI											
Ducato Van Maxi 35 L3H2 Multijet3 2.2 140PS S&S Man MY25	3,500	2,190	2,190	1,310	2,100	2,400	6,500	3,000	750	120	3
Ducato Van Maxi 35 L4H2 Multijet3 2.2 140PS S&S Man MY25	3,500	2,235	2,235	1,265	2,100	2,400	6,500	3,000	750	120	3
Ducato Van Maxi 35 L4H3 Multijet3 2.2 140PS S&S Man MY25	3,500	2,265	2,265	1,235	2,100	2,400	6,500	3,000	750	120	3
Ducato Van Maxi 40 L4H3 Multijet3 2.2 180PS S&S Manual MY25	4,250	2,310	2,235	2,015	2,100	2,400	6,500	2,250	750	100	3
Ducato Van Maxi 40 L4H3 Multijet3 2.2 180PS S&S Auto MY25	4,250	2,325	2,250	2,000	2,100	2,400	6,500	2,250	750	100	3
Ducato Van Maxi 40 L4H2 Multijet3 2.2 180PS S&S Auto MY25	4,250	2,295	2,220	2,030	2,100	2,400	6,500	2,250	750	100	3
Ducato Window Van Maxi 40 L4H2 Multijet3 2.2 140PS S&S Man MY25	4,250	2,275	2,200	2,050	2,100	2,400	6,500	2,250	750	100	3
Ducato Chassis Cab Maxi 35 L2H1 Multijet3 2.2 140PS S&S Man MY25	3,500	1,880	1,805	1,695	2,100	2,400	6,500	3,000	750	120	3
Ducato Chassis Cab Maxi 35 L3H1 Multijet3 2.2 140PS S&S Man MY25	3,500	1,900	1,825	1,675	2,100	2,400	6,500	3,000	750	120	3
Ducato Chassis Crew Cab Maxi 35 L3H1 Multijet3 2.2 140PS S&S Man MY25	3,500	2,115	2,040	1,460	2,100	2,400	6,500	3,000	750	120	7
Ducato Platform Cab Maxi 35 L3H1 Multijet3 2.2 140PS S&S Man MY25	3,500	1,875	1,800	1,700	2,100	2,400	6,500	3,000	750	120	3

Category N1: Vehicles designed and constructed for the carriage of goods and having a maximum mass not exceeding 3.5 tonnes.

Category N2: Vehicles designed and constructed for the carriage of goods and having a maximum mass exceeding 3.5 tonnes but not exceeding 12 tonnes.

Dimensions

	L2		L3		L4	
	H1	H2	H2	H3	H2	H3
EXTERIOR DIMENSIONS (mm)						
Wheelbase	3,450		4,035		4,035	
Length	5,413		5,998		6,363	
Height	2,254	2,522	2,522	2,760	2,252	2,760
Width (excl. door mirrors)	2,050		2,050		2,050	
Front overhang	948		948		948	
Rear overhang	1,015		1,015		1,380	

INTERIOR DIMENSIONS (mm)						
Volume (m ³)	10	11.5	13	15	15	17
Load length at floor	3,120		3,705		4,070	
Load length at mid-height with bulkhead	2,914		3,555		3,920	
Load width (maximum)	1,870		1,870		1,870	
Load width between wheel arches	1,422		1,422		1,422	
Load height (maximum)	1,662	1,932	1,932	2,172	1,932	2,172
Load sill height	535-565		535-565		535-565	

DOOR DIMENSIONS (mm)						
Side door width	1,250		1,250		1,250	
Side door height	1,485	1,755	1,755		1,755	
Rear doors width	1,562		1,562		1,562	
Rear doors height	1,520	1,790	1,790	2,030	1,790	2,030

CHASSIS CAB DIMENSIONS (mm)				
VERSION	L2H1 CHASSIS CAB	L3H1 CHASSIS CAB	CHASSIS CREW CAB	PLATFORM CAB
Wheelbase	3,450	4,035	4,035	4,035
Length	5,358	5,943	5,843	5,963
Height	2,254	2,254	2,254	2,254
Width (excl. door mirrors)	2,050	2,050	2,050	2,050
Front overhang	948	948	948	948
Rear overhang	960	960	860	980





CONNECTED
SERVICES

A PRO LIKE YOU

FIAT
PROFESSIONAL



CONNECTED SERVICES



MY:ASSISTANT SAFETY AT YOUR FINGERTIPS

Services include Mopar® Connect Crash Assistance, available 24 hours a day, Roadside Assistance support and Theft Assistance that can provide GPS coordinates and will immobilise the engine when the vehicle stops to facilitate recovery.



MY:REMOTE CONTROL YOUR VAN FROM A DISTANCE

Finding your vehicle has never been easier. Locate it on the map and follow the fastest route to get there. You can receive alerts when your vehicle leaves a designated area or if the person driving it is travelling at excessive speed.



MY:CAR KEEP YOUR VEHICLE IN PERFECT CONDITION

Provides up-to-date information about your vehicle such as the fuel level or tyre pressure to ensure that every journey is safe. Check the Vehicle Health Report with useful information and tips on how to take care of it.

MY:JOURNEY TURN YOUR ITINERARIES INTO TRAVEL EXPERIENCES

My:Journey keeps track of your vehicles movements and allows you to view trips in a dashboard, add customised notes, merge multiple trips into one, and categorise trips as personal or business; to form a unique travel experience.

MY:eCHARGE MANAGE PUBLIC AND PRIVATE CHARGING

A package which, through the use of dedicated features and mobile apps, allows you to find, use, pay and track recharges at public charging stations (easy Charge), as well as being able to manage charging with a Connected Wallbox.

MY: FLEETMANAGER SIMPLIFY YOUR FLEET MANAGEMENT

my:FleetManager allows you to manage company fleets of cars and light commercial vehicles with maximum efficiency and safety. The most advanced Fleet Management solutions and Car Sharing solutions for car sharing among employees.



Fiat Professional FlexCare

EXTENDED CARE PREMIUM

Extended Warranty + Roadside Assistance

Offers new van buyers complete peace of mind throughout the duration and mileage of your chosen contract term for worry free driving and maximum coverage, with the additional benefit of roadside assistance.

SERVICE CARE

Scheduled Servicing

There's no need to worry about budgeting for your next service. Simply take out a Fiat Professional service care plan. You can then focus on the more important things in life, knowing your servicing costs are taken care of.

myFiatProfessional

Take care of your vehicle with a click! Register now for personalised advice, dedicated tools and exclusive promotions are waiting for you.

BIK Calculator

If you have private use of a company van for more than driving to and from work, you may be taxed on this benefit.

Vehicle Excise Duty

V.E.D. rate for all light goods vehicles registered on or after 1 April 2024 and not exceeding 3,500kg: £335.

V.E.D. is not applicable to electric versions.



FIAT

PROFESSIONAL



Fiat Professional UK Ltd. Pinley House, 2 Sunbeam Way, Coventry CV3 1ND.

NOTE: Every endeavour has been made to ensure that the information, including prices, contained in this leaflet was accurate at the time of publishing December 2024. The Company however, reserves the right, whilst preserving the essential characteristics of the models described, to introduce at any time modifications, changes of details, equipment or accessories as may be considered necessary to improve the models described or for any other reason of a constructional or operational nature.

Designed and produced by Vario Press Ltd.