



Innovation
that excites

NISSAN NV200



Print | Close

[Introduction](#) | [Performance indicators](#) | [Exterior design](#) | [Interior design](#) | [Load space](#) | [Technology and Performance](#) | [Accessory](#) | [Technical specifications](#) | [Price list](#) | [Commitments](#)

[REQUEST A TEST DRIVE](#)

LCV AN UNBEATABLE LINEUP



NISSAN

OFFICIAL LIGHT COMMERCIAL VEHICLE
OF THE UEFA CHAMPIONS LEAGUE



At Nissan, we're constantly innovating for your business - coming up with clever new ways to deliver class-leading space and enhanced efficiency, improved versatility and durability, increased cost savings and ease of use. We engineer excitement and innovation round the clock to make your daily routine smoother, your work more fun and keep you ahead of the game. Because nothing beats the feeling of a job done smarter.

Print | Close

[Introduction](#) | [Performance indicators](#) | [Exterior design](#) | [Interior design](#) | [Load space](#) | [Technology and Performance](#) | [Accessory](#) | [Technical specifications](#) | [Price list](#) | [Commitments](#)

[Page 1](#) | [Page 2](#)

REQUEST A TEST DRIVE

PICK YOUR PLAYER

THE NISSAN NV200 IS BUILT FOR THE WAY YOU WORK. Thanks to its impressive load capacity, it's up to the biggest tasks, but is small enough to thread through busy city traffic - it is the perfect partner for your business. Offering up to 7 seats with luggage space to spare, the NV200 Combi is the no-nonsense people carrier you need. Bags of space, up to seven seats and a rugged practicality that shrugs off the daily rough and tumble. Backed by a 5-Year / 100,000 miles Pan-European Manufacturer Warranty you're ready for anything life throws at you.



"We've got 3 NV200s now - so I suppose you could call it a fleet! Mine is a refrigerated version which is fantastic for summer events, and the others double up as family cars - they're great for ferrying the kids around!"



"I love my NV200 because it's a real van that feels just like a car to drive. I pack in all my paints, fabrics and ladders and zip around town. I love the rear view camera best, it makes it so easy to park without having to strain my neck."



"I started my own business 3 years ago and owe much of my success to my NV200. It's so spacious and incredibly comfortable which makes the job less tiring. I've just got a new one, and with the 5 Year Warranty now, it is even better than before!"



"It's the best investment I ever made. My last diesel van cost me 4x as much to keep on the road and the NV200 is a whole lot quieter too, which is pretty handy with all the night driving I do."



[Print](#) | [Close](#)

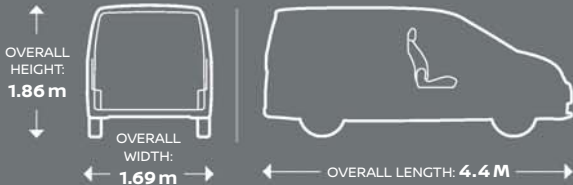
[Introduction](#) | [Performance indicators](#) | [Exterior design](#) | [Interior design](#) | [Load space](#) | [Technology and Performance](#) | [Accessory](#) | [Technical specifications](#) | [Price list](#) | [Commitments](#)

[Page 1](#) | [Page 2](#)

[REQUEST A TEST DRIVE](#)

COMPACT BODY & OUTSTANDING CARGO CAPACITY

PREPARE TO BE SURPRISED. A lot more goes into the NV200 than you'd think looking at its neat exterior - the intelligent design makes it so much easier to get everything from A to B.

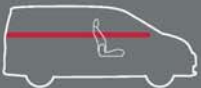


THINK BIG. The NV200 is ready to take any load your business can throw at it thanks to the generous loadspace available.



CLEVER MULTIPURPOSE SPACE

BE FLEXIBLE. It's simple with the NV200. Its internal dimensions have been thoughtfully planned out to make room for jobs of all shapes and sizes, so that you never have to say no.



2.8 m SPACE FOR A LONG LADDER



524 mm CARGO FLOOR HEIGHT



2 EURO PALLETS CARGO SPACE



1.22 m BETWEEN WHEELARCHES

UP TO **795KG** PAYLOAD
4.2M³ CARGO VOLUME

KEY PERFORMANCE INDICATORS

CITYWISE

MAKE THE RIGHT MANOEUVRES. Easy entry, simple to park and incredibly agile in challenging environments, with great visibility thanks to a high driving position too.

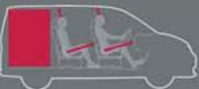


OUTSTANDING VERSATILITY

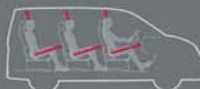
TAKE TIME OUT. It's important - and the NV200 Combi makes it possible with comfortable seating for up to 7 people and masses of space for your luggage and leisure equipment.



Up to 3.1 m³ CARGO VOLUME WHEN SECOND ROW FOLDED



Up to 2.3 m³ CARGO VOLUME WITH TWO ROWS - 5 PASSENGERS



7 SEATS
MORE SEATS, MORE KNEE ROOM, MORE HEADROOM

Print | Close

REQUEST A TEST DRIVE

SMALL OUTSIDE BIG INSIDE

Despite the NV200's generous 4.2m³ capacity, its compact dimensions make it easy to manoeuvre through traffic and negotiate parking spaces. A smart design - the best in town.



Print | Close

[Introduction](#) | [Performance indicators](#) | [Exterior design](#) | [Interior design](#) | [Load space](#) | [Technology and Performance](#) | [Accessory](#) | [Technical specifications](#) | [Price list](#) | [Commitments](#)

[REQUEST A TEST DRIVE](#)





TAKE A HANDS-ON APPROACH

Driver focused. Inside the NV200's spacious cabin, the solid quality of the materials, thoughtful, functional design details, numerous storage spaces and a raised, multi-adjustable driving seat create a comfortable mobile office.

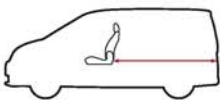
[Print](#) | [Close](#)

[Introduction](#) | [Performance indicators](#) | [Exterior design](#) | [Interior design](#) | [Load space](#) | [Technology and Performance](#) | [Accessory](#) | [Technical specifications](#) | [Price list](#) | [Commitments](#)

[REQUEST A TEST DRIVE](#)

OUTSTANDING CARGO CAPACITY

The NV200 has been designed to maximize cargo space by optimizing internal dimensions. With 4.2m³ cargo volume and 795kg payload, the NV200 is ready for any unexpected job.



2.04M

THE NV200 HAS A
LOAD SPACE LONG ENOUGH
FOR TWO EURO PALLETS.



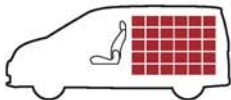
1.50M

WITH MORE SPACE
BETWEEN WALLS, WIDER
LOADS ARE EASY TOO.



1.36M

A LOW FLOOR AND TALL ROOF
MEANS MORE HEIGHT TO
COPE WITH BULKY LOADS.



4.2M³

CLASS LEADING
CARGO VOLUME.



Image for illustration purposes only. Glazed side doors not available on NV200 Panel Van or Crew Van. Please consult the technical specification for full line-up details.



Print | Close

[Introduction](#) | [Performance indicators](#) | [Exterior design](#) | [Interior design](#) | [Load space](#) | [Technology and Performance](#) | [Accessory](#) | [Technical specifications](#) | [Price list](#) | [Commitments](#)

[Page 1](#) | [Page 2](#) | [Page 3](#) | [Page 4](#)

REQUEST A TEST DRIVE

COMPACT BODY WITH UNLIMITED POSSIBILITIES

Intelligent design means the NV200 packs remarkable cargo space into its compact external dimensions. With an overall length of 4.40m and an overall width of 1.69m, it is easy to move through the streets in even the most challenging of urban environments. From baguettes to building materials, the NV200 can carry it all.



4.40M
OVERALL LENGTH

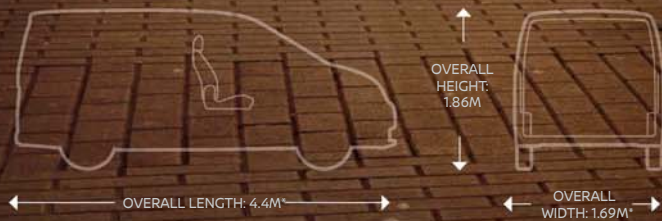


Image for illustration purposes only. Accessories fitted to this vehicle available at additional cost. Please consult the technical specification for full line-up details

[Print](#) | [Close](#)

[Introduction](#) | [Performance indicators](#) | [Exterior design](#) | [Interior design](#) | [Load space](#) | [Technology and Performance](#) | [Accessory](#) | [Technical specifications](#) | [Price list](#) | [Commitments](#)

[Page 1](#) | [Page 2](#) | [Page 3](#) | [Page 4](#)

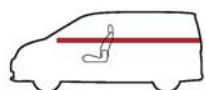
[REQUEST A TEST DRIVE](#)



524MM
CARGO FLOOR HEIGHT
2 EURO PALLETS

CLEVER MULTIPURPOSE SPACE

The NV200's huge cargo space has been shrewdly designed to maximize internal dimensions and facilitate your everyday work. With an interior length of 2.04m and 1.22m between the wheelarches, two Euro pallets can fit in easily. Loading and unloading is quicker and easier too with the cargo floor just 524mm from ground level. Cargo floor load lashing hooks help keep your deliveries secure. You can configure the NV200 to meet your needs, thanks to a large choice of partition walls, one or two sliding side doors and optional rear windows.



2.8M

SPACE FOR A LONG LADDER
(WITH OPTIONAL FOLDING
PARTITION)



524MM

CARGO FLOOR HEIGHT



2 EURO PALLETS

ROOM FOR 2 EURO PALLETS



1.22M

1.22M BETWEEN WHEELARCHES

Print | Close

[Introduction](#) | [Performance indicators](#) | [Exterior design](#) | [Interior design](#) | [Load space](#) | [Technology and Performance](#) | [Accessory](#) | [Technical specifications](#) | [Price list](#) | [Commitments](#)

[Page 1](#) | [Page 2](#) | [Page 3](#) | [Page 4](#)

REQUEST A TEST DRIVE



CONVERSION NV200 FRIDGE

Satisfy your appetite with the new NV200's refrigerated conversion! Tailor-made for the rigorous demands of the catering business, its two types of cooling units meet the highest standards of technical excellence and can refrigerate to 0°C or to -10°C – and still leave you 2.2m³ of pure load space. It can be equipped with adjustable shelves, aluminium baseboards and intermediate, reinforced or waterproof flooring. With its compact silhouette and unbeatable agility, the NV200 makes cool work out of all fresh deliveries.

INSULATED CELL SPECIFICATIONS

DATA	VALUE
Weight of cell:	149 kg
Insulated cell volume:	2.2 m ³
Max interior height:	1152 mm
Max interior width:	1239 mm
Max interior length:	1736 mm
Wheel arch:	1078 mm
Sliding door:	1013 mm x 636 mm
Rear door (H x L):	1061 mm x 1069 mm

- 1. WIDE SIDE ACCESS
- 2. REINFORCED FLOOR
- 3. HORIZONTAL PARTITION
- 4. ADJUSTABLE SHELVES
- 5. TEMPERATURE CONTROL UNIT
- 6. A/C POWER INLET



CARRIER NEOS 100

DATA	VALUE
Weight:	65.7 kg
Power:	1138 W at 0°C
Insulation category:	FNA*
Temperature:	Down to 0°C

DIAVIA ROLLE 2000

DATA	VALUE
Weight:	62.5 kg
Power:	707 W at 0°C, 609 W at -10°C
Insulation category:	FNA* with sliding door, FRB** without sliding door
Temperature:	Down to -10°C

*Normal Insulation class A / **Reinforced Insulation class B



Print | Close



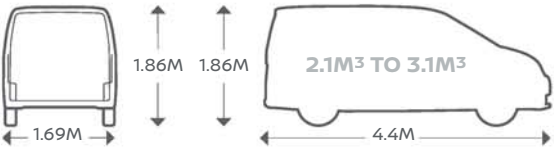
CONVERSION CREW VAN

Transport a crew of 5 and a 2.1m³ load or create outstanding volume in just a few seconds! The folding 2nd row 3-seater bench seat - complete with seatbelts, headrests and an integrated mesh bulkhead - folds down quickly to create 3.1m³ of cargo space. Compact and robust with 180 degree opening twin rear french doors to make loading and unloading easier, the NV200 Crew Van is the most practical choice for your profession.

Image for illustration purposes only. Glazed side doors are not available on the NV200 Crew Van. Seat trims may differ.

WORKING FLEXIBILITY

2.1M³ VOLUME WHEN THE SECOND ROW OF SEATS IS IN PLACE AND 3.1M³ WHEN THE SECOND ROW OF SEATS IS FOLDED.



1. FOLDING 2ND ROW 3-SEATER BENCH SEAT WITH SEAT BELTS
2. FOLDING MESH BULKHEAD (INTEGRATED INTO BENCH SEAT
3. EFFORTLESS FOLDING
4. 3.1M³ OF CARGO SPACE



Print | Close

[Introduction](#) | [Performance indicators](#) | [Exterior design](#) | [Interior design](#) | [Load space](#) | [Technology and Performance](#) | [Accessory](#) | [Technical specifications](#) | [Price list](#) | [Commitments](#)

[Page 1](#) | [Page 2](#) | [Page 3](#) | [Page 4](#) | [Page 5](#) | [Page 6](#) | [Page 7](#)

REQUEST A TEST DRIVE

OUTSTANDING VERSATILITY

The NV200 Combi is exceptionally versatile. Adapted to all your activities, it combines the most flexible moving space with almost unlimited carrying capabilities. It comfortably seats up to seven people - and with five people in two rows of seats, there's 2.3m³ of luggage space to spare. The NV200 Combi is the ideal vehicle for both work and leisure.



3.1M³

UP TO 3.1M³ CARGO VOLUME WHEN
SECOND ROW FOLDED.



2.3M³

UP TO 2.3M³ CARGO
VOLUME WITH TWO ROWS -
5 PASSENGERS.



7 SEATS

MORE SEATS, MORE LEGROOM,
MORE HEADROOM.



[Print](#) | [Close](#)

[Introduction](#) | [Performance indicators](#) | [Exterior design](#) | [Interior design](#) | [Load space](#) | [Technology and Performance](#) | [Accessory](#) | [Technical specifications](#) | [Price list](#) | [Commitments](#)

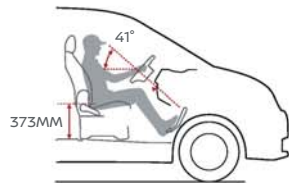
[Page 1](#) | [Page 2](#) | [Page 3](#) | [Page 4](#) | [Page 5](#) | [Page 6](#) | [Page 7](#)

[REQUEST A TEST DRIVE](#)

CITYWISE

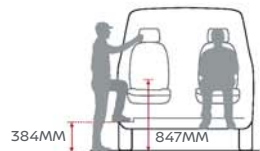
The NV200 thrives in the city. Its compact dimensions make it easier to park and position in traffic than its competitors. Excellent visibility from the high seating position combined with superb agility help you manoeuvre the NV200 easily through crowded streets.

SEE CLEARLY, SIT COMFORTABLY



THE NV200'S DRIVING POSITION IS HIGHER THAN ITS RIVALS TO HELP YOU SEE FURTHER AHEAD, WITH THE DASHBOARD INSTRUMENTS ANGLED TO FACE YOU, SO YOU CAN READ THEM WITH JUST A QUICK GLANCE.

THE NV200'S 5.3M TURNING RADIUS KERB TO KERB AND COMPACT 4.4M OVERALL LENGTH PUT YOU STREETS AHEAD WHEN YOU'RE PICKING YOUR WAY THROUGH THE CITY'S OBSTACLES AND CHALLENGES.



LOW FLOOR FACILITATES ENTRY AND EXIT.

COLOUR REVERSING CAMERA.

Squeezing into small parking spaces and loading bays is simple with the colour reversing camera*. The display gives you a full view of the area behind you, and superimposes guidelines to help you position the NV200 exactly where you want it.



*Standard from Acenta grade



Print | Close

[Introduction](#) | [Performance indicators](#) | [Exterior design](#) | [Interior design](#) | [Load space](#) | [Technology and Performance](#) | [Accessory](#) | [Technical specifications](#) | [Price list](#) | [Commitments](#)

[Page 1](#) | [Page 2](#) | [Page 3](#) | [Page 4](#) | [Page 5](#) | [Page 6](#) | [Page 7](#)

[REQUEST A TEST DRIVE](#)



SMART AND CONVENIENT

It's easier to work and relax in the NV200's smart interior. There's a solid, quality feel to the materials and a wide range of storage spaces designed for the items you use every day. The passenger seat can also be specified with an optional folding back which makes a desk so that you can take care of the paperwork before you head to your next job.

The NV200 has 13 different storage spaces. The centre upper tray and glove box are ideal for paperwork, while holders for your drinks, bottles and cans on the dashboard are easy to reach and the large door pockets can hold an A4 road map. The NV200 has concealed storage too, such as the drawer under the driver's seat, a secret compartment in the glove box and a convenient centre console.



[Print](#) | [Close](#)

[Introduction](#) | [Performance indicators](#) | [Exterior design](#) | [Interior design](#) | [Load space](#) | [Technology and Performance](#) | [Accessory](#) | [Technical specifications](#) | [Price list](#) | [Commitments](#)

[Page 1](#) | [Page 2](#) | [Page 3](#) | [Page 4](#) | [Page 5](#) | [Page 6](#) | [Page 7](#)

[REQUEST A TEST DRIVE](#)

POWER, ECONOMY, SAFETY



The NV200 is available with a highly efficient 1.5 dCi turbo diesel engine with the choice of either 90PS or 110PS.

Both power outputs offer excellent fuel economy, with an impressive range in everyday driving conditions, so you can also go longer between fill-ups, as well as lower CO₂ emissions.



At Nissan, safety is a top priority. That's why the new NV200 is equipped with a wide variety of active safety systems including Vehicle Dynamic Control (VDC), ABS with Electronic Brakeforce Distribution (EBD) and Brake Assist which increases your braking effort and optimises stability control. Like you, we want everyone to feel safe on board the NV200, so as well as the driver's airbag, front seat belt pretensioners are standard on all models.

In addition, the front passenger, side and curtain airbags; cruise control and speed limiter; and the new Tyre Pressure Monitoring System (TPMS) all come as standard on the NV200 Combi to enhance your safety.

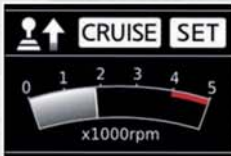
EUR 6				
DIESEL	GEARBOX TYPE	OUTPUT	CO ₂ EMISSIONS	FUEL CONSUMPTION
1.5 dCi	5-speed manual	90 PS	from 131g	from 56.5mpg
1.5 dCi	6-speed manual	110 PS	from 130g	from 57.6mpg

Print | Close

REQUEST A TEST DRIVE

LOW COST OF OWNERSHIP

The NV200 makes good business sense. Designed for low total cost of ownership from the outset, the NV200's robust construction, durable, reliable materials and minimal everyday running costs make it a long-term asset - and it comes with a 5-Year/100,000 miles warranty to prove it.



GEAR CHANGE INDICATOR

To help you drive more economically, the gearchange indicator in the dashboard display shows when the engine reaches the ideal revs to shift into a higher gear.



KEEPING YOU INFORMED

Equipped with a multifunctional display with onboard trip computer, the NV200 provides all the information you need to drive efficiently. It shows you engine revs, average and real-time fuel consumption, as well as remaining range.



TOUGH WHERE IT MATTERS

The tough centre structure can handle the demands of hard work and helps keep you well protected.



Print | Close

[Introduction](#) | [Performance indicators](#) | [Exterior design](#) | [Interior design](#) | [Load space](#) | [Technology and Performance](#) | [Accessory](#) | [Technical specifications](#) | [Price list](#) | [Commitments](#)

[Page 1](#) | [Page 2](#) | [Page 3](#) | [Page 4](#) | [Page 5](#) | [Page 6](#) | [Page 7](#)

REQUEST A TEST DRIVE



1. CRUISE CONTROL AND SPEED LIMITER
2. USB PORT & AUX SOCKET FOR MP3
PLAYER

3. AM/FM/CD AUDIO SYSTEM
4. FRONT FOG LIGHTS
5. AIR CONDITIONING

6 14" ALLOY WHEEL
7. STEEL BULKHEAD WITH FIXED WINDOW*
8. OPENING MESH BULKHEAD

CONSIDER YOUR OPTIONS

Get equipped for an easier life. Adapt to the climate with air conditioning and front fog lights, tailor the cargo area for your needs with a steel bulkhead with fixed window or an opening mesh bulkhead, and your cabin into a mobile office with NissanConnect. The NV200 has got all your needs covered.



*Only available with glazing pack

Print | Close

[Introduction](#) | [Performance indicators](#) | [Exterior design](#) | [Interior design](#) | [Load space](#) | [Technology and Performance](#) | [Accessory](#) | [Technical specifications](#) | [Price list](#) | [Commitments](#)

[Page 1](#) | [Page 2](#) | [Page 3](#) | [Page 4](#) | [Page 5](#) | [Page 6](#) | [Page 7](#)

REQUEST A TEST DRIVE

SELECT YOUR FAVORITES



Get your NV200 fully equipped for a hard day's work. Start with plastic or wood protection for the cargo area, add mudguards and mats to keep out the dirt, and opt for body side mouldings and sidebars to avoid any scrapes. Invest in a roof rack and a removable towbar too - with Nissan Genuine Accessories you'll be ready for anything.

- 1. LUGGAGE RACK
- 2. WIND DEFLECTORS FRONT SET
- 3. BUMPER CORNER PROTECTORS
- 4. SLIDING DOOR PLASTIC PROTECTION - COMPLETE PROTECTION IN 4 PARTS
- 5. PLASTIC FLOOR PROTECTION FOR VAN
- 6. LOAD CARRIER STEEL TWO BARS
- 7. MUDGUARD
- 8. REMOVABLE TOWBAR
- 9. FLOOR MATS
- 10. BODY SIDE MOULDINGS AND SIDE BAR



Print | Close

[Introduction](#) | [Performance indicators](#) | [Exterior design](#) | [Interior design](#) | [Load space](#) | [Technology and Performance](#) | [Accessory](#) | [Technical specifications](#) | [Price list](#) | [Commitments](#)

REQUEST A TEST DRIVE

NISSAN NV200 PANEL VAN

The NV200 Panel Van provides big van capabilities within a compact van footprint. Thanks to its impressive load capacity and low floor height, it is up to the biggest tasks, but is small enough to thread through busy city traffic. The spacious, comfortable cabin gives you the storage, convenience and connectivity you need, making the NV200 Panel Van the perfect partner for your business.

VISIA

SAFETY

- ABS with EBD and Brake Assist
- Driver airbag
- Nissan Anti Theft System immobiliser
- Remote central door locking
- Superlocking
- Shielded door locks
- Spare wheel
- Vehicle Dynamic Control (VDC)
- Thatcham approved alarm system

EXTERIOR STYLING

- 14" Steel wheels
- Black bumpers (front and rear)
- Black door mirrors
- Full wheel covers
- 60:40 split 180 degree unglazed twin rear french doors
- Twin sliding side panel doors

INTERIOR STYLING

- Fixed passenger seat
- 13 cabin storage areas
- Under-seat storage

COMFORT AND CONVENIENCE

- Steering wheel mounted audio controls
- Rake adjustable steering wheel
- Trip computer
- Front electric windows - driver's side one touch
- Electrically adjustable door mirrors
- Power steering

CARGO AREA

- Full steel bulkhead without fixed window
- 6x cargo floor load lashing hooks

AUDIO AND NAVIGATION

- 2 speakers
- AUX socket for MP3 Player
- USB port
- Bluetooth® telephone integration
- AM/FM/CD audio system

ACENTA

IN ADDITION TO VISIA

COMFORT AND CONVENIENCE

- Front fog lights

AUDIO AND NAVIGATION

- Colour reversing camera

OPTIONS*

- Manual air conditioning
- Passenger airbag

OPTION PACKS*

- VERSATILITY PACK
 - Opening mesh bulkhead
 - Foldable passenger seat with fixed table back
- GLAZED REAR DOORS PACK
 - 180 degree glazed twin rear french doors
 - Rear view mirror
 - Rear wiper
 - Full steel bulkhead with fixed window (not included if Versatility Pack also selected)
- GLAZED REAR TAILGATE PACK
 - Glazed rear tailgate
 - Rear view mirror
 - Rear wiper
 - Full steel bulkhead with fixed window (not included if Versatility Pack also selected)

TEKNA

IN ADDITION TO ACENTA

SAFETY

- Passenger airbag

EXTERIOR STYLING

- 14" Alloy wheels
- Body coloured bumpers (front and rear)

COMFORT AND CONVENIENCE

- Cruise control and speed limiter
- Manual air conditioning

OPTION PACKS*

- VERSATILITY PACK
 - Opening mesh bulkhead
 - Foldable passenger seat with fixed table back
- GLAZED REAR DOORS PACK
 - 180 degree glazed twin rear french doors
 - Rear view mirror
 - Rear wiper
 - Full steel bulkhead with fixed window (not included if Versatility Pack also selected)

- GLAZED REAR TAILGATE PACK
 - Glazed rear tailgate
 - Rear view mirror
 - Rear wiper
 - Full steel bulkhead with fixed window (not included if Versatility Pack also selected)

*Options available at additional cost.

Print | Close

Introduction | Performance indicators | Exterior design | Interior design | Load space | Technology and Performance | Accessory | **Technical specifications** | Price list | Commitments

Page 1 | Page 2 | Page 3 | Page 4 | Page 5 | Page 6 | Page 7 | Page 8

REQUEST A TEST DRIVE

NISSAN NV200 CREW VAN

The NV200 Crew Van provides great flexibility with its easy-to-use, adaptable layout. Transport a crew of 5 and a 2.1m³ load or create outstanding volume in just a few seconds. Three full-size seats in the second row with safety belts, headrests and a bulkhead fold down in no time to create 3.1m³ of cargo space. Compact and robust with rear French doors to make loading and unloading simple, the NV200 Crew Van is the perfect multipurpose tool. The spacious interior is full of features to make your working day a breeze, and is generously equipped with useful storage compartments throughout the cabin.

ACENTA

SAFETY

- ABS with EBD and Brake Assist
- Driver airbag
- Nissan Anti Theft System immobiliser
- Remote central door locking
- Superlocking
- Shielded door locks
- Spare wheel
- Vehicle Dynamic Control (VDC)
- Thatcham approved alarm system

EXTERIOR STYLING

- 14" Steel wheels
- Black bumpers (front and rear)
- Black door mirrors
- Full wheel covers
- 60:40 split 180 degree opening unglazed twin rear french doors
- Twin sliding side panel doors

INTERIOR STYLING

- 13 cabin storage areas
- Under-seat storage

COMFORT AND CONVENIENCE

- Steering wheel mounted audio controls
- Rake adjustable steering wheel
- Trip computer
- Front electric windows - driver's side one touch
- Electrically adjustable door mirrors
- Power steering
- Front fog lights

CARGO AREA

- Folding 2nd row 3-seater bench seat
- Folding mesh bulkhead (integrated into bench seat)

AUDIO AND NAVIGATION

- 2 speakers
- AUX socket for MP3 Player
- USB port
- Bluetooth® telephone integration
- AM/FM/CD audio system
- Colour reversing camera

OPTIONS*

- Passenger airbag
- Manual air conditioning

OPTION PACKS*

- Glazed Rear Doors Pack
 - 60:40 split 180 degree opening glazed twin rear french doors
- Rear view mirror
- Rear wiper

*Options available at additional cost.



Print | Close

Introduction | Performance indicators | Exterior design | Interior design | Load space | Technology and Performance | Accessory | [Technical specifications](#) | Price list | Commitments

Page 1 | [Page 2](#) | Page 3 | Page 4 | Page 5 | Page 6 | Page 7 | Page 8

REQUEST A TEST DRIVE

NISSAN NV200 COMBI

The NV200 Combi offers supreme versatility to cater for business and leisure needs. Equipped with either 5 or 7 seats it can carry a full complement of passengers, or the fully folding rear seats can make way for a large cargo area. With a compact exterior, but large interior space, combined with a tight turning circle, the NV200 Combi is easy to manoeuvre and park.

ACENTA

SAFETY

- ABS with EBD and Brake Assist
- Vehicle Dynamic Control (VDC)
- Driver, passenger, side and curtain airbags
- Nissan Anti Theft System immobiliser
- Remote central door locking
- Thatcham approved alarm system
- Superlocking
- ISOFIX childseat anchorage points (2nd row outer seats)
- Shielded door locks
- Spare wheel
- Tyre Pressure Monitoring System

AUDIO AND NAVIGATION

- Colour reversing camera
- 4 speakers
- AM/FM/CD audio system
- AUX socket for MP3 Player
- USB port
- Bluetooth® telephone integration

EXTERIOR

- Black door mirrors
- 14" Alloy wheels
- Body coloured bumpers
- Rear privacy glass

COMFORT AND CONVENIENCE

- Steering wheel mounted audio controls
- Electrically adjustable door mirrors
- Front electric windows
- 13 cabin storage areas
- Under-seat storage
- Trip computer
- Manual air conditioning (front)
- Front fog lights
- Rake adjustable steering wheel

TECHNOLOGY

- Cruise control and speed limiter

CARGO AREA

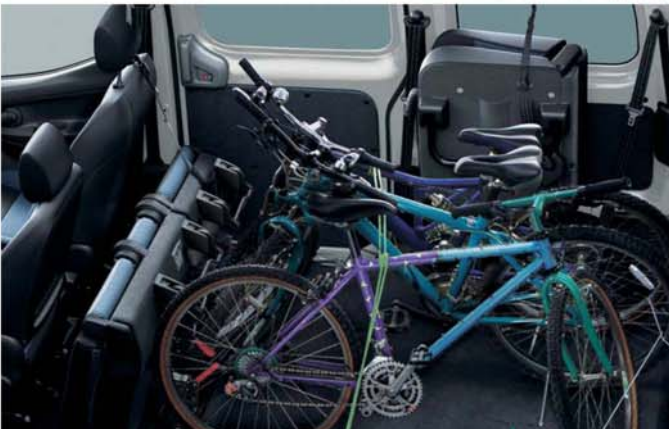
- Glazed rear tailgate door with rear wiper
- Twin sliding side glazed doors
- Folding 2nd row 60:40 split 3-seater bench seat
- Folding 3rd row 50:50 split 2-seater bench seat (7 seat Combi only)
- Luggage floor protector (5 seat Combi only)
- 4x cargo floor load lashing hooks (each with maximum 200kg vertical load capacity)

OPTIONS*

- Manual air conditioning (rear) (7 seat Combi only)
- Twin sliding side glazed doors with opening windows

*Options available at an extra cost

Please note that the NV200 Combi is a passenger car for registration and taxation purposes (including benefit in kind)



Print | Close

[Introduction](#) | [Performance indicators](#) | [Exterior design](#) | [Interior design](#) | [Load space](#) | [Technology and Performance](#) | [Accessory](#) | [Technical specifications](#) | [Price list](#) | [Commitments](#)

[Page 1](#) | [Page 2](#) | [Page 3](#) | [Page 4](#) | [Page 5](#) | [Page 6](#) | [Page 7](#) | [Page 8](#)

REQUEST A TEST DRIVE

COLOURS



Cayman Blue / C, V
M



Starburst Silver / C, V
M



Twilight Grey / C, V
M



Alabaster White/ C, V
S



Metallic Black / C, V
M



Flame Red / C, V
S



Pearl White / C
P

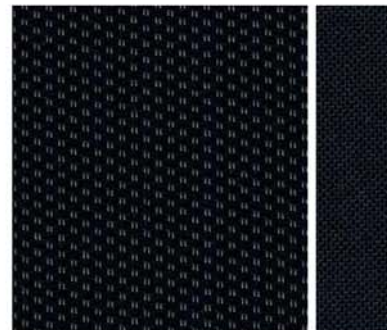


Bronze / C
M

C: Available on Combi
V: Available on Panel Van & Crew Van

S: Solid Paint
M: Metallic Paint
P: Pearlescent Paint

TRIMS



Grey - Dark grey
PANEL VAN & CREW VAN



Blue - Dark grey
PANEL VAN & CREW VAN

WHEELS



14" Steel wheels with full wheel covers
PANEL VAN & CREW VAN



14" Alloy wheels
COMBI

Print | Close

[Introduction](#) | [Performance indicators](#) | [Exterior design](#) | [Interior design](#) | [Load space](#) | [Technology and Performance](#) | [Accessory](#) | [Technical specifications](#) | [Price list](#) | [Commitments](#)

[Page 1](#) | [Page 2](#) | [Page 3](#) | [Page 4](#) | [Page 5](#) | [Page 6](#) | [Page 7](#) | [Page 8](#)

REQUEST A TEST DRIVE

NV200 PANEL VAN TECHNICAL SPECIFICATION

		K9K 1.5 dCi		
MODEL				
Grade		VISIA	ACENTA, TEKNA	ACENTA, TEKNA
Emissions Class		Euro 6		
Seats		2		
ENGINE				
No. of Cylinders / Valves per Cylinder		4 / 2		
Engine Capacity	cm ³	1461		
Bore x Stroke	mm	76.0 x 80.5		
Maximum Engine Power	PS(kW)@rpm	90 (66) @ 4,000	90 (66) @ 4,000	110 (81) @ 4,000
Maximum Torque	Nm@rpm	200 @ 2,000	200 @ 2,000	240 @ 2,000
Compression Ratio		15.5		
Fuel Type		Diesel		
Fuel Supply		Commonrail direct injection		
Battery 12v	Ah	60		
Alternator	Amps	150		
DRIVE TRAIN				
Clutch type		Dry, single plate, mechanical		
Gearbox	Type	5 Speed Manual	5 Speed Manual	6 Speed Manual
Gearbox performances	1st*	3.727	3.727	3.727
	2nd*	2.048	2.048	1.947
	3rd*	1.321	1.231	1.323
	4th*	0.971	0.971	0.975
	5th*	0.738	0.733	0.763
	6th*	-	-	0.638
* Speed (Km/h) per 1000rpm	Rev	3.545	3.545	3.687
Final drive ratio		3.733		
Driven Wheels		Front Wheel Drive		
FUEL CONSUMPTION & EMISSIONS				
Fuel tank capacity	Litres	55		
Fuel Consumption	Urban Cycle	MPG (L/100km)	49.6 (5.7)	51.4 (5.5)
	Extra Urban	MPG (L/100km)	61.4 (4.6)	61.4 (4.6)
	Combined	MPG (L/100km)	56.5 (5.0)	57.6 (4.9)
CO ₂ mass emissions	Combined	g/km	131	130
PERFORMANCE				
Maximum Speed	mph	98	98	105
Min. Turning Circle (Wall to Wall)	m	11.1		
Min. Turning Circle (Kerb to Kerb)	m	10.6		

			K9K 1.5 dCi		
MODEL					
Grade			VISIA	ACENTA, TEKNA	ACENTA, TEKNA
Emissions Class			Euro 6		
WEIGHTS					
Gross Vehicle Weight		Kg	2,000		
Kerb Weight	Min	Kg	1,272	1,272	1,286
Maximum Payload		Kg	728	728	714
Gross Axle Weight	Front	Kg	958	958	970
	Rear	Kg	1,042	1,042	1,030
Towing Capacity	Braked	Kg	1,100		
	Unbraked	Kg	640		
OVERALL DIMENSIONS					
Length		mm	4,400		
Width with mirrors		mm	2,011		
Width w/o mirrors		mm	1,695		
Height	Unladen	mm	1,860		
Wheelbase		mm	2,725		
Overhang	Front	mm	835		
	Rear	mm	840		
Track	Front	mm	1,490		
	Rear	mm	1,510		
Ground Clearance	Unladen	mm	158		
LUGGAGE / CARGO AREA DIMENSIONS					
Maximum Length		mm	2,040		
Maximum Width		mm	1,500		
Maximum Height		mm	1,358		
Minimum Width between the Wheelarches		mm	1,220		
Load Platform Height	Unladen	mm	524		
Cargo Volume	Max Cube	m³	4.2		
Side Door	Width	mm	693		
	Height	mm	1,171		
Back Door	Width	mm	1,262		
	Height	mm	1,228		
CHASSIS					
Suspension	Front		Strut		
	Rear		Leaf rigid		
Steering			Electric power assisted rack & pinion		
Braking System			Disc front, drum rear, ABS, EBD and brake assist		
Wheel Size			14 x 5.5J		
Tyre Size			175/70R14C OFFSET 45 P.C.D 114.3 x 4H		

* According to Directive 80/1268/CEE CEE; Last amendment 2004/3/CE
** MPG figures are obtained from laboratory testing, in accordance with 2004/3/EC and intended for comparisons between vehicles and may not reflect real driving results.
(Optional equipment, maintenance, driving behaviour, road and weather conditions may affect the official results).

NV200 CREW VAN TECHNICAL SPECIFICATION

MODEL		K9K 1.5 dCI		
Grade		ACENTA		
Emission Class		Euro 6		
Seats		5		
ENGINE				
No. of Cylinders / Valves per Cylinder		4 / 2		
Engine Capacity	cm³	1461		
Bore x Stroke	mm	76.0 x 80.5		
Maximum Engine Power	PS(kw)@rpm	90 (66) @ 4,000	110 (81) @ 4,000	
Maximum Torque	Nm@rpm	200 @ 2,000	240 @ 2,000	
Compression Ratio		15.5		
Fuel Type		Diesel		
Fuel Supply		Commonrail direct injection		
Battery 12v	Ah	50		
Alternator	Amps	150		
DRIVE TRAIN				
Clutch type		Dry, single plate, mechanical		
Gearbox	Type	5 Speed Manual	6 Speed Manual	
Gearbox performances	1st*	3.727	3.727	
	2nd*	2.048	1.947	
	3rd*	1.321	1.323	
	4th*	0.971	0.975	
	5th*	0.738	0.763	
	6th*		0.638	
* Speed (Km/h) per 1000rpm	Rev	3.545	3.687	
Final drive ratio		3.733		
Driven Wheels		Front Wheel Drive		
FUEL CONSUMPTION & EMISSIONS				
Fuel tank capacity	Litres	55		
Fuel Consumption	Urban Cycle	MPG (L/100km)	49.6 (5.7)	51.4 (5.5)
	Extra Urban	MPG (L/100km)	61.4 (4.6)	61.4 (4.6)
	Combined	MPG (L/100km)	56.5 (5.0)	57.6 (4.9)
CO2 mass emissions	Combined	g/km	131	130
PERFORMANCE				
Maximum Speed	mph	98	105	
Min. Turning Circle (Wall to Wall)	m	11.1		
Min. Turning Circle (Kerb to Kerb)	m	10.6		

MODEL			K9K 1.5 dCi	
Grade			ACENTA	
Emissions Class			Euro 6	
WEIGHTS				
Gross Vehicle Weight		Kg	2,042	2,070
Kerb Weight	Min	Kg	1,421	1,435
Maximum Payload		Kg	621	635
Gross Axle Weight	Front	Kg	1,010	
	Rear	Kg	1,100	1,120
Towing Capacity	Braked	Kg	1,100	
	Unbraked	Kg	640	
OVERALL DIMENSIONS				
Length		mm	4,400	
Width with mirrors		mm	2,011	
Width w/o mirrors		mm	1,695	
Height	Unladen	mm	1,860	
Wheelbase		mm	2,725	
Overhang	Front	mm	835	
	Rear	mm	840	
Track	Front	mm	1,490	
	Rear	mm	1,510	
Ground Clearance	Unladen	mm	158	
LUGGAGE / CARGO AREA DIMENSIONS				
Maximum Length - seats folded / unfolded		mm	1,570 / 1,150	
Maximum Width		mm	1,500	
Maximum Height		mm	1,358	
Minimum Width between the Wheelarches		mm	1,220	
Load Platform Height	Unladen	mm	524	
Cargo Volume - rear seats folded / unfolded	Max Cube	m³	3.1 / 2.1	
Side Door	Width	mm	693	
	Height	mm	1,171	
Back Door	Width	mm	1,262	
	Height	mm	1,228	
CHASSIS				
Suspension	Front		Strut	
	Rear		Leaf rigid	
Steering			Electric power assisted rack & pinion	
Braking System			Disc front, drum rear, ABS, EBD amd brake assist	
Wheel Size			14 x 5.5J	
Tyre Size			175/70R14C OFFSET 45 P.C.D 114.3 x 4H	

* According to Directive 80/1268/CEE CEE, Last amendment 2004/3/CE
** MPG figures are obtained from laboratory testing, in accordance with 2004/3/EC and intended for comparisons between vehicles and may not reflect real driving results.
(Optional equipment, maintenance, driving behaviour, road and weather conditions may affect the official results).

Print | Close

REQUEST A TEST DRIVE

NV200 COMBI TECHNICAL SPECIFICATION

MODEL			K9K 1.5 dCi			
Grade			ACENTA			
Seats			5	7	5	7
ENGINE						
No. of Cylinders			4			
Valves per Cylinder			2			
Engine Capacity	cm ³		1461			
Bore x Stroke	mm		76.0 x 80.5			
Maximum Engine Power	PS (kW) @ rpm		90 (66) @ 4,000		110 (81) @ 4,000	
Maximum Torque	Nm @ rpm		200 @ 2,000		240 @ 2,000	
Emission Class			Euro 6			
Compression Ratio			15.5			
Fuel Type			Diesel			
Fuel Supply			Commonrail direct injection			
Battery 12v	Ah		50			
Alternator	Amps		150			
DRIVE TRAIN						
Clutch type			Dry, Single plate, mechanical			
Gearbox	Type		5 Speed Manual		6 Speed Manual	
Gearbox performances	1st*		3.727		3.727	
	2nd*		2.048		1.947	
	3rd*		1.321		1.323	
	4th*		0.971		0.975	
	5th*		0.738		0.763	
	6th*		-		0.638	
	Rev		3.545		3.687	
Final drive ratio			3.733			
Driven Wheels			Front			
FUEL CONSUMPTION & EMISSIONS**						
Fuel tank capacity	l		55			
Fuel Consumption	Urban	MPG (l/100km)	49.6 (5.7)		51.4 (5.5)	
	Extra-Urban	MPG (l/100km)	58.9 (4.8)		61.4 (4.6)	
	Combined	MPG (l/100km)	55.4 (5.1)		57.6 (4.9)	
CO ₂ mass emissions	Combined	g/Km	133		130	
PERFORMANCE						
Maximum Speed	mph		98		105	
Min. Turning Circle (Wall to Wall)	m		11.1			
Min. Turning Circle (Kerb to Kerb)	m		10.6			

*Speed (Km/h) per 1000rpm
** MPG figures are obtained from laboratory testing, in accordance with 2004/3/EC and intended for comparisons between vehicles and may not reflect real driving results.
(Optional equipment, maintenance, driving behaviour, road and weather conditions may affect the official results).

MODEL			K9K 1.5 dCi			
Grade			ACENTA			
Seats			5	7	5	7
WEIGHTS						
Gross Vehicle Weight		Kg	2,040	2,050	2,070	
Kerb Weight	Min	Kg	1,355	1,390	1,369	1,404
Maximum Payload		Kg	685	660	701	666
Gross Axle Weight	Front	Kg	946	948	957	961
	Rear	Kg	1,104	1,102	1,113	1,109
Towing Capacity	Braked	Kg	1,100			
	Unbraked	Kg	640			
OVERALL DIMENSIONS						
Length		mm	4,400			
Width	with mirrors	mm	2,011			
Width	w/o mirrors	mm	1,695			
Height	Unladen	mm	1,860			
Wheelbase		mm	2,725			
Overhang	Front	mm	835			
	Rear	mm	840			
Track	Front	mm	1,490			
	Rear	mm	1,510			
Ground Clearance	Unladen	mm	158			
LUGGAGE / CARGO AREA DIMENSIONS						
Maximum Length		mm	2,040			
Maximum Width		mm	1,500			
Maximum Height		mm	1,358			
Minimum Width between the Wheelarches		mm	1,220			
Load Platform Height	Unladen	mm	524			
Cargo Volume	Max Cube	m ³	2.3	0.9	2.3	0.9
	with 3rd row seat folded	m ³	N/A	2.1	N/A	2.1
	with 2nd row seat folded	m ³	3.1	2.9	3.1	2.9
Side Door	Width	mm	693			
	Height	mm	1,171			
Back Door	Width	mm	1,262			
	Height	mm	1,228			
CHASSIS						
Suspension		Front	Strut			
		Rear	Leaf rigid			
Steering			Electric power assisted rack & pinion			
Braking System			Disc front, drum rear, ABS, EBD and Brake Assist			
Wheel Size			14×5.5J			
Tyre Size			175/70R14C Offset 45 P.C.D 114.3×4H			



NV200 Panel Van with Versatility Pack

DPF FILTER

WHAT IS A DPF?

A **DIESEL PARTICULATE FILTER (DPF)** forms part of the vehicle's exhaust in order to limit the amount of soot particles contained within the exhaust gas passing into the atmosphere.

When the amount of soot in the filter reaches a specific level, this needs to be reduced in order to maintain the filter's function.

This reduction is called '**REGENERATION**' and is carried out by the vehicle's electronic control system which raises the exhaust gas temperatures during normal driving. If a vehicle requires frequent regeneration due to driving style, these high temperatures cause the engine oil to degrade more quickly.

However, from 2011 onwards Nissan vehicles were fitted with an **OIL CHANGE SUPERVISOR (OCS)** as well as a DPF to help monitor the condition of the oil and ensure the quality never falls below a minimum level.

WHAT IF I ONLY DRIVE SHORT JOURNEYS?

If the vehicle is only driven for short journeys, or at low speed, then it may not be possible for regeneration to occur. In this situation, the below warning lights will be illuminated on your dashboard.



Please refer to your Owner's Manual for further information.

After seeing these warning lights you need to drive, as soon as possible, above 40mph until the light goes out. This can take up to 30 minutes depending on the amount of soot collected in the filter.

WHAT IF I IGNORE THEM?

If you continue to drive at low speeds the exhaust gas temperatures cannot rise, so regeneration cannot occur. In this instance, a combination of the below warning lights will be illuminated on you dashboard.



In this case, and in order to protect the engine and DPF Filter, the vehicle will require '**SERVICE REGENERATION**' which can only be carried out by a workshop equipped with Nissan diagnostic equipment. You will need to go to your nearest Nissan dealer in case the oil and filter needs to be replaced.

As '**SERVICE REGENERATION**' is not a manufacturing fault, so the cost will **NOT** be covered under warranty.

NV200 Panel Van with Glazed Rear Doors Pack

Print | Close

Introduction | Performance indicators | Exterior design | Interior design | Load space | Technology and Performance | Accessory | [Technical specifications](#) | Price list | Commitments

Page 1 | Page 2 | Page 3 | Page 4 | Page 5 | Page 6 | Page 7 | [Page 8](#)

REQUEST A TEST DRIVE

NISSAN LCV 5 YEAR MANUFACTURER WARRANTY

Nissan now offers a standard 5-Year / 100,000 miles Pan-European Manufacturer Warranty for its LCV range.*



- 5 Year or 100,000 miles bumper-to-bumper protection
- 5-Year Paintwork Warranty – covering the body paint
- 5-Year NISSAN Genuine Parts & Accessories Warranty
- 5-Year Roadside Assistance
- 12 Year Corrosion Warranty on NV200
- Fully transferable

And with service intervals at 2 years or 25,000 miles on the NV200, you'll not only have 5 years of peace of mind but also low running costs into the bargain.



AT NISSAN, YOU BRING OUT THE BEST IN US.

You spark our imagination. You provoke our ingenuity. You inspire us to change the rules and innovate. And at Nissan, innovation is not just about additions and extensions; it's about crossing the line to reinvent the status quo. It's about developing unexpected solutions to satisfy your wildest and most pragmatic desires. At Nissan, we design vehicles, accessories and services that break the mould - making the practical exciting and the exciting practical to offer you a more exhilarating driving experience everyday.

*5-Year / 100,000 miles (whichever comes first) Manufacturer Warranty for the LCV range (with the exception of e-NV200: 5-Year / 60,000 miles Manufacturer Warranty for EV system parts, 3-Year / 60,000 miles for the rest of the vehicle).
Unlimited mileage for Paintwork, Nissan Genuine Parts & Accessories, Roadside Assistance & Corrosion Warranties.
For more details, please refer to Nissan Warranty Booklet.

CUSTOMER SERVICES



SPECIALISED LCV NETWORK

NISSAN provides a specialised network of LCV dealerships to support your specific commercial vehicle requirements:

- Pan-European coverage
- Dedicated LCV Sales & After Sales Staff
- Competitive financing solutions
- Tailor made conversion offers
- Competitive extended warranty offers to go even beyond NISSAN LCV 5 Year Warranty.
- Test drive your choice



AFTERSALES SERVICES

If your car breaks down, it's inconvenient. If your van breaks down, it's a serious blow to your business. Even time allowed for servicing is downtime, when your van isn't earning its keep. At Nissan, we understand these hard business facts. So we do the best to ensure that your van stays where it belongs - working for you, on the road.



NISSAN SERVICE CONTRACTS

Together, you and your Nissan dealer can establish a Nissan Service Contract which provides Service and Maintenance cover for the mileage and period that suits your business best. Giving you true peace of mind, this Contract will ensure that your NV200 is cared for by dedicated Nissan technicians.



5 YEAR ROADSIDE ASSISTANCE

- Pan-European coverage for breakdowns, accidents, non-warrantable incidents (such as flat tyres, lost keys, wrong fuel...)
 - 24/7, 365 days
 - Emergency Call Centre
 - Prompt roadside assistance
- If this is not possible and your vehicle is still immobilised after a few hours, we will make sure you are provided with a courtesy vehicle as soon as possible or if necessary, overnight accommodation and travel to your onward destination or back to your base. We will also recover your immobilised vehicle.

Print | Close

Introduction | Performance indicators | Exterior design | Interior design | Load space | Technology and Performance | Accessory | Technical specifications | Price list | Commitments

REQUEST A TEST DRIVE



[Print](#) | [Close](#)

[Introduction](#) | [Performance indicators](#) | [Exterior design](#) | [Interior design](#) | [Load space](#) | [Technology and Performance](#) | [Accessory](#) | [Technical specifications](#) | [Price list](#) | [Commitments](#)

[NV200 Model and option prices](#) | [Further Information](#)

[Page 1](#) | [Page 2](#) | [Page 3](#) | [Page 4](#) | [Page 5](#)

[REQUEST A TEST DRIVE](#)



NV200 PANEL VAN

Grade	Engine	Transmission	GVW (kgs)	Basic Price £	VED + FRF £	CV OTR (ex. VAT) £
Visia	1.5 dCi 90	5 Manual	2,155	15,200	295	15,495
Acenta	1.5 dCi 90	5 Manual	2,155	15,835	295	16,130
Acenta	1.5 dCi 110	6 Manual	2,155	16,185	295	16,480
Tekna	1.5 dCi 90	5 Manual	2,155	16,885	295	17,180
Tekna	1.5 dCi 110	6 Manual	2,155	17,235	295	17,530

The Basic Price excludes VAT but includes delivery to the dealership and number plates. The CV On The Road Price excludes VAT but includes delivery to the dealership, number plates, 12 months Vehicle Excise Duty (£240) and Government First Registration Fee of £55.

NISSAN LCV 5 YEAR MANUFACTURER WARRANTY

NISSAN now offers a standard 5 Year Pan-European Manufacturer Warranty on its whole LCV range*. This is much more than just a warranty as it includes:



- 5 Year or 100,000 miles bumper-to-bumper protection
- 5 Year Paintwork Warranty – covering the body paint
- 5 Year NISSAN Genuine Parts & Accessories Warranty
- 5 Year Roadside Assistance
- 12 Year Corrosion Warranty on NV300
- Fully transferable

And with service intervals at 2 years or 25,000 miles on the NV300, you'll not only have 5 years of peace of mind but also low running costs into the bargain.

[Print](#) | [Close](#)

[Introduction](#) | [Performance indicators](#) | [Exterior design](#) | [Interior design](#) | [Load space](#) | [Technology and Performance](#) | [Accessory](#) | [Technical specifications](#) | [Price list](#) | [Commitments](#)

[NV200 Model and option prices](#) | [Further Information](#)

[Page 1](#) | [Page 2](#) | [Page 3](#) | [Page 4](#) | [Page 5](#)

[REQUEST A TEST DRIVE](#)

NV200 CREW VAN

Grade	Engine	Transmission	GVW (kgs)	Basic Price £	VED + FRF £	CV OTR (ex. VAT) £
Acenta	1.5 dCi 90	5 Manual	2,042	17,935	295	18,230
Acenta	1.5 dCi 110	6 Manual	2,070	18,285	295	18,580

The Basic Price excludes VAT but includes delivery to the dealership and number plates. The CV On The Road Price excludes VAT but includes delivery to the dealership, number plates, 12 months Vehicle Excise Duty (£240) and Government First Registration Fee of £55.

NISSAN LCV 5 YEAR MANUFACTURER WARRANTY

NISSAN now offers a standard 5 Year Pan-European Manufacturer Warranty on its whole LCV range*. This is much more than just a warranty as it includes:



- 5 Year or 100,000 miles bumper-to-bumper protection
- 5 Year Paintwork Warranty – covering the body paint
- 5 Year NISSAN Genuine Parts & Accessories Warranty
- 5 Year Roadside Assistance
- 12 Year Corrosion Warranty on NV300
- Fully transferable

And with service intervals at 2 years or 25,000 miles on the NV300, you'll not only have 5 years of peace of mind but also low running costs into the bargain.

Print | Close

[Introduction](#) | [Performance indicators](#) | [Exterior design](#) | [Interior design](#) | [Load space](#) | [Technology and Performance](#) | [Accessory](#) | [Technical specifications](#) | [Price list](#) | [Commitments](#)

[NV200 Model and option prices](#) | [Further Information](#)

[Page 1](#) | [Page 2](#) | [Page 3](#) | [Page 4](#) | [Page 5](#)

REQUEST A TEST DRIVE

NV200 OPTIONS

	Visia	Acenta	Tekna	Crew Van	Basic Price £
Passenger Airbag		○	●	○	150
Metallic paint* (Cayman Blue, Starburst Silver, Twilight Grey, Metallic Black, Bronze)	○	○	○	○	375
Air Conditioning		○	●	○	450
NissanConnect** + Air Conditioning		○	●		500
OPTION PACKS					
Versatility Pack: Opening mesh bulkhead, Folding passenger seat		○	○		150
Glazed Rear Doors Pack: 180 degree glazed twin rear french doors, Rear view mirror, Rear wiper, Full steel bulkhead with fixed window (not included if Versatility Pack also selected)		○	○	○	150
Glazed Rear Tailgate Pack: Glazed rear tailgate, Rear view mirror, Rear wiper, Full steel bulkhead with fixed window (not included if Versatility Pack also selected)		○	○	○	150

*Flame Red & Alabaster White are solid paint colours. Pearl White is a pearlescent paint colour

**Nissan Connect must be chosen together with Air Conditioning

Factory Option - ○ Standard - ● Dealer Fit Option - □

Print | Close

Introduction | Performance indicators | Exterior design | Interior design | Load space | Technology and Performance | Accessory | Technical specifications | **Price list** | Commitments

NV200 Model and option prices | Further Information

Page 1 | Page 2 | Page 3 | **Page 4** | Page 5

REQUEST A TEST DRIVE

NV200 VAN OPTIONS

	Visia	Acenta	Tekna	Crew Van Acenta	Basic Price £
Protection Pack (front rubber mats, mudguards)	<input type="checkbox"/>	<input type="checkbox"/>	<input type="checkbox"/>		129.00
Protection Pack Plus (Rubber mats, front + rear mudguards & Van floor protection)	<input type="checkbox"/>	<input type="checkbox"/>	<input type="checkbox"/>	<input type="checkbox"/>	299.00
Rear park sensors	<input type="checkbox"/>	<input type="checkbox"/>	<input type="checkbox"/>	<input type="checkbox"/>	376.00
Rubber mats (front)	<input type="checkbox"/>	<input type="checkbox"/>	<input type="checkbox"/>	<input type="checkbox"/>	32.50
Waterproof seat covers (MY14 onwards)	<input type="checkbox"/>	<input type="checkbox"/>	<input type="checkbox"/>		105.62
Telephone cup holder	<input type="checkbox"/>	<input type="checkbox"/>	<input type="checkbox"/>	<input type="checkbox"/>	47.25
Front mudguards	<input type="checkbox"/>	<input type="checkbox"/>	<input type="checkbox"/>	<input type="checkbox"/>	55.83
Rear mudguards	<input type="checkbox"/>	<input type="checkbox"/>	<input type="checkbox"/>	<input type="checkbox"/>	55.83
Body side mouldings	<input type="checkbox"/>	<input type="checkbox"/>	<input type="checkbox"/>	<input type="checkbox"/>	148.28
Plastic floor protection	<input type="checkbox"/>	<input type="checkbox"/>	<input type="checkbox"/>		242.50
Wheelarch plastic protection	<input type="checkbox"/>	<input type="checkbox"/>	<input type="checkbox"/>	<input type="checkbox"/>	129.17
Cargo plastic protection, french doors (4 pieces)	<input type="checkbox"/>	<input type="checkbox"/>	<input type="checkbox"/>	<input type="checkbox"/>	110.83
Cargo plastic protection, rear panel (2 pieces)	<input type="checkbox"/>	<input type="checkbox"/>	<input type="checkbox"/>	<input type="checkbox"/>	82.50
Cargo plastic protection, sliding door (4 parts)	<input type="checkbox"/>	<input type="checkbox"/>	<input type="checkbox"/>	<input type="checkbox"/>	136.22
Side bars	<input type="checkbox"/>	<input type="checkbox"/>	<input type="checkbox"/>	<input type="checkbox"/>	410.83
Load carrier - 2 bars	<input type="checkbox"/>	<input type="checkbox"/>	<input type="checkbox"/>	<input type="checkbox"/>	127.50
Roof rack	<input type="checkbox"/>	<input type="checkbox"/>	<input type="checkbox"/>	<input type="checkbox"/>	621.60
Flanged towbar and electrics [#]	<input type="checkbox"/>	<input type="checkbox"/>	<input type="checkbox"/>	<input type="checkbox"/>	425.00
DAB Converter Kit	<input type="checkbox"/>	<input type="checkbox"/>	<input type="checkbox"/>	<input type="checkbox"/>	149.16

[#] Price quoted for flanged towbar with single electrics (7 PIN)

Basic Price excludes VAT

Dealer fit option prices include fitting but are only a guide. Please check with your local Nissan dealer for exact prices.

Factory Option - ☐ Standard - ☒ Dealer Fit Option - ☐

Print | Close

[Introduction](#) | [Performance indicators](#) | [Exterior design](#) | [Interior design](#) | [Load space](#) | [Technology and Performance](#) | [Accessory](#) | [Technical specifications](#) | [Price list](#) | [Commitments](#)

[NV200 Model and option prices](#) | [Further Information](#)

[Page 1](#) | [Page 2](#) | [Page 3](#) | [Page 4](#) | [Page 5](#)

REQUEST A TEST DRIVE

NISSAN VAN INSURANCE

Nissan Insurance has been designed to help Nissan drivers get the most from their cover, boasting the following benefits:

- All repairs are guaranteed for 3 years*
- Option to pay annually or through Direct Debit
- Optional Legal Expenses Cover

So, if you would like to obtain a Van Insurance quotation, or would like to know more about Nissan Van Insurance, please call **0344 335 3783** to speak to our team based in the UK.

Calls charged at the same rate as local 01 and 02 numbers and will be included in inclusive call packages from mobiles. Lines are open Monday to Friday 9am-7pm and Saturday 9am-5pm.

Terms and Conditions

Quotations are subject to underwriting terms and acceptance criteria.

Nissan Insurance is arranged by Europa Group Ltd trading as Nissan Insurance Services on behalf of Maiden Global Holdings Ltd (registered in England with company number 07324422) Registered office: Albion House, Valley Business Centre, Gordon Road, High Wycombe, HP13 6EQ. Authorised and regulated by the Financial Conduct Authority. Financial Services Register number 555397. Europa Group Limited is authorised and regulated by the Financial Conduct Authority. Financial Services Register No. 309794. Registered as a limited company in England and Wales No. 3279177. Registered office: Europa House, Midland Way, Thornbury, Bristol BS35 2JX.

*Contact your local Nissan dealer or see the Nissan website for full Terms & Conditions

Print | Close

[Introduction](#) | [Performance indicators](#) | [Exterior design](#) | [Interior design](#) | [Load space](#) | [Technology and Performance](#) | [Accessory](#) | [Technical specifications](#) | [Price list](#) | [Commitments](#)

[NV200 Model and option prices](#) | [Further Information](#)

Page 1 | Page 2

REQUEST A TEST DRIVE

FURTHER INFORMATION

Price Protection Plan. Order a new Nissan for delivery no more than 4 weeks in advance and the price you are quoted is the price you pay. This is irrespective of any subsequent price rises between placing your order and delivery of your new vehicle. Nissan Motor (GB) is not liable for price adjustments caused by Government changes in the rate of VAT or by any other applicable legislation or regulation or Vehicle Excise Duty.

Five year/100,000 miles manufacturer's warranty (whichever comes first) - Nissan's comprehensive warranty provides cover for your new Nissan from defects in materials or workmanship. Your vehicle is covered in all European Countries where Authorised Nissan Dealers are located. If your vehicle becomes inoperative due to warrantable defects, a towing service, when necessary, to the Authorised Dealer is covered. If a warrantable defect abroad takes more than six hours to repair, the Touring Assistance Programme will pay for a hotel or rental car to a certain maximum. The paint warranty covers painted body parts (excluding the underbody) for three years regardless of mileage driven. For further details please contact your local Authorised Nissan Dealer.

Nissan e-NV200 offers a 5-year / 60,000 mile warranty (whichever comes first) on all EV dedicated components, including the lithium-ion battery, and a 3-year / 60,000 mile warranty on standard components. The Nissan e-NV200 lithium-ion battery state of health guarantee protects against battery capacity loss (less than 9 bars out of 12) as shown on e-NV200's capacity gauge for a period of 5 years / 60,000 miles. For e-NV200 flex customers, the battery state of health guarantee applies for the duration of the battery lease. Special build conversions may be subject to extended delivery.

The conversions in this price list are from Nissan Motor GB-appointed converters and have warranty terms in line with the Nissan Pan European Warranty. The converter is responsible for all aspects of the conversion.

Nissan European Roadside Assistance is provided for the period of your new vehicle manufacturer warranty. Visit www.nissan-aftersales.co.uk for full details including terms & conditions.

Nissan EV Pan-European Roadside Assistance is provided by AXA for 3 years or 60,000 miles, whichever comes first.

For e-NV200 Van Flex (battery lease) customers, the Nissan EV Pan-European Roadside Assistance will cover you for the duration of your battery lease agreement should your Nissan EV run out of battery charge. For any other repair work, the basic warranty clause still applies.

Benefits and Services are provided by AXA Assistance. AXA Assistance is authorised and regulated by the Financial Conduct Authority (FCA). FCA Register number 439069. AXA Assistance UK Limited (registration 2638890) 106 - 118 Station Road, Redhill Surrey RH1 1PR

Recyclability - we take our environmental responsibilities very seriously - innovation today comes with a deep respect for the environment. Our engines are now much more unobtrusive and their emissions have been considerably reduced. All our vehicles are designed with recycling in mind. All prices in this list are quoted in pounds sterling. Value Added Tax (VAT) has been calculated at 20%.

Pricing - All prices are subject to change, please see your nearest dealership for the most up to date prices. While all reasonable effort has been made to ensure the accuracy of the information provided, due to Nissan's policy of continuous product improvement, all particulars contained are subject to constant revision and Nissan reserves the right to change, alter or modify among other things, specifications, colours and prices of models without notice at any time. Accordingly you should consult your local Nissan Dealer for the exact introduction dates of all models and for the most up-to-date information.

Fleet Customers Special colours and out-of-line-up specifications are available, please check details with fleet managers (regional DFM, CSM or LCV sales managers); Fleet only versions regardless listed in Dealer Master Price List or not, are to be ordered by Dealer Support via regional DFM, CSM or LCV sales managers

VAT and VED VAT application is based on current HMRC guidelines, please check with HMRC for specific guidance for the vehicle you are purchasing. VED is determined by the DVLA, please check with the DVLA for specific guidance for the vehicle you are purchasing.

[Print](#) | [Close](#)

[Introduction](#) | [Performance indicators](#) | [Exterior design](#) | [Interior design](#) | [Load space](#) | [Technology and Performance](#) | [Accessory](#) | [Technical specifications](#) | [Price list](#) | [Commitments](#)

[NV200 Model and option prices](#) | [Further Information](#)

[Page 1](#) | [Page 2](#)

[REQUEST A TEST DRIVE](#)



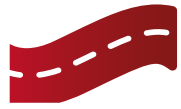
[Print](#) | [Close](#)



[REQUEST A TEST DRIVE](#)



There's no time limit on how long you will benefit from our promises. If you are a Nissan Customer, we will look after you. **That is our Promise.**



FREE COURTESY CAR

YOU want to stay on the road when your Nissan is in for a service or repair.



FREE VIDEO HEALTH CHECK

YOU want to understand what is going on with your car's service.



SERVICE PRICE MATCH

YOU want the best value for money when it comes to service and repair.



CONTINUOUS ROADSIDE ASSISTANCE

YOU want the peace of mind you get from our quality service to go even further.



HERE FOR YOU

YOU want your problems resolved quickly.



TEST DRIVE YOUR CHOICE

YOU want to test drive the latest Nissan model, engine and gearbox you're interested in buying.

NISSAN PROMISE to keep you mobile free of charge whether you need a courtesy car, or just a lift

NISSAN PROMISE a free vehicle health check and we can even show you any work that might need doing with your own vehicle assessment idea.

NISSAN PROMISE simple Fixed Price Servicing, and will price match like-for-like competitor written quotes within 10 miles of your local dealer.

NISSAN PROMISE to provide you with Roadside Assistance for free every time you service your car with us.

NISSAN PROMISE to propose a resolution to any problem within two working days.

NISSAN PROMISE that's what you'll get when you pre-book your test drive either online or through our customer service centre.

Just call 0330 123 1231.

Please visit nissan.co.uk/promise. Terms and conditions apply.

YOU+NISSAN
OUR PROMISE. YOUR EXPERIENCE.

Print | Close

[Introduction](#) | [Performance indicators](#) | [Exterior design](#) | [Interior design](#) | [Load space](#) | [Technology and Performance](#) | [Accessory](#) | [Technical specifications](#) | [Price list](#) | [Commitments](#)

Page 1 | [Page 2](#)

REQUEST A TEST DRIVE

Nissan. Innovation that excites.

Dealer stamp:

NISSAN MOTOR (GB) LIMITED

The Rivers Office Park
Denham Way
Maple Cross
Rickmansworth
Hertfordshire
WD3 9YS

Visit our website at: www.nissan.co.uk

Prices effective from January 1st 2018 unless otherwise stated

Print | Close

[Introduction](#) | [Performance indicators](#) | [Exterior design](#) | [Interior design](#) | [Load space](#) | [Technology and Performance](#) | [Accessory](#) | [Technical specifications](#) | [Price list](#) | [Commitments](#)

REQUEST A TEST DRIVE