



PURE VANS

Telephone - 01633-212944

Email - sales@purevans.com

www.purevans.com

TRANSIT CONNECT



VISIONARY. INGENIOUS. REMARKABLE.
EVERY VEHICLE BEARS HIS SIGNATURE.

Henry Ford

CONTENTS

Introduction	02	Driver assistance technologies	14	Colour and trim	32
Audio and communication	04	Remarkable Technologies	22	Options and accessories	34
Loadspace	06	Leader	24	Ford Protect	36
Load capacity and payload	08	Trend	26	Specifications	38
Engines	10	Limited	28	Stowage/Next steps	52
Cost of ownership	12	Sport	30		



Model shown is a Transit Connect Van Trend L2 in Kapoor Red metallic body colour (option) and 16" 5x2-spoke alloy wheels, painted Sparkle Silver (option).

Model shown is a Transit Connect Van Sport L1 in Chrome Blue metallic body colour (option).

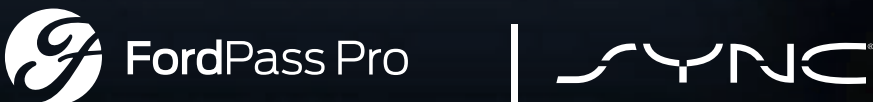
Built for the toughest of tasks

Functionality is key to the new Transit Connect. So, you'll find a versatile and easily-accessible loadspace, a choice of wheelbase lengths and a comfortable driving environment, all wrapped in a bold new shape. Designed from the very start as a hard-working commercial vehicle, its advanced engine technology optimises power and fuel economy, while meeting the latest Euro Stage 6.2 emissions standard.

Model shown is a Transit Connect Van Limited L2 in Moondust Silver metallic paint (option) with 16" 5x2-spoke alloy wheels, painted Sparkle Silver, large door mirrors (option), dual side load doors (option) and full steel bulkhead with load-through hatch (option).

360°





Meet your phone's new best friend

Ford SYNC 3

Ford SYNC 3 integrates seamlessly with your smartphone, letting you control everything from phone calls and text messaging to music and satellite navigation - all via the 6" touchscreen or through remarkably simple voice commands. (Option) We're committed to enhancing and improving upon the SYNC & Maps driving experience and will periodically release software updates so you have the latest version of SYNC & Maps.

SYNC 3 features

- Manage your phone, music, apps and navigation with simple voice commands
- Hear your text messages read aloud for you
- Emergency Assistance[†] helps occupants place an emergency call to provide emergency services with the vehicle location in their respective language
- Control SYNC-compatible apps with AppLink, while Apple CarPlay and Android Auto let you navigate your smartphone through the SYNC 3 home screen, as if it were your handset
- Colour touchscreen supports multi-touch 'swipe' and 'pinch-to-zoom' gestures,

and lets you arrange application icons and background displays just as you would on your tablet or smartphone

Access additional features via your smartphone with the **FordPass App**.

- Select points of interest along your route. FordPass will send these locations to your SYNC 3 Navigation when you connect through AppLink
- Search for refuelling points by brand or fuel grade
- Search available parking spaces, check costs, opening hours and ratings

Born connected

Only Ford can deliver a fully connected ecosystem that is built in from the start. The FordPass Connect* modem and the FordPass App make the job easier, unlocking a range of efficiency and security features.



FordPass Pro** gives you the tools to look after your business vehicles. Designed especially for owner operators and small business owners, its features and services help you keep your vehicles healthy, secure and running smoothly.

- **Keep track** of all your vehicle locations (up to five) on one map
- **Check vehicles are locked**, and lock them remotely wherever you are
- **Receive Health Alerts for your vehicles** and see their key health info all in one place
- **Receive reminders** for important dates, like MOT and services, to help you plan ahead and keep vehicles on the road
- FordPass Pro is available in selected markets. Please see your Ford Dealer for details. FordPass Pro is designed for business customers with up to 5 Ford vehicles (that have FordPass Connect subscriptions).



- **Remote Lock & Unlock** lets you check if the vehicle is locked and to lock it remotely
- **Find** nearby parking spaces and filter by minimum vehicle access height
- **Vehicle Status** helps drivers keep on top of basic maintenance, quickly check they have enough fuel and that the tyre pressures are correct for the current load



- **Live Traffic** (two year trial)** sends up-to-date traffic information directly to the SYNC 3 Navigation system. The technology then adjusts the recommended route based on the traffic conditions, so you waste less time on the way to your next job
- **On-board Wi-Fi** (three month trial)*** with speeds of up to 4G this enables mobile working for up to 10 devices. You can even use the hotspot from up to 15 m outside the vehicle for more efficient mobile working when you get to the site
- Subscription charges may apply to FordPass Connect features, see below for more information.

Ford Data Services

With Ford Data ServicesTM and FordPass Connect you can receive vehicle data securely to either your own telematics application or via your chosen Telematics Service Provider. Data available includes: vehicle health, vehicle location, fuel usage and driving characteristics, and can be received on multiple vehicles. Data can be integrated with your existing in-house application or your chosen Telematics Service Provider.

Ford Telematics

With Ford Telematics and FordPass Connect you can easily view data and manage all your vehicles using our intuitive user dashboard. Receive data on multiple vehicles including: vehicle health, vehicle location, fuel usage and driving characteristics. The information is presented with actionable insights that deliver the data you need to manage your fleet.

*FordPass Connect is an optional extra. The on-board modem will be connected at the time of vehicle delivery. You may choose to opt in/out of certain data sharing.

**FordPass Pro, or certain features of FordPass Pro, may require a paid subscription either now or in the future. Your access to FordPass Pro, or its features may be limited if you choose not to subscribe to these services.

[†]Live Traffic access is complimentary for the first 2 years following the registration of a new Ford featuring SYNC 3 Navigation; thereafter a licence fee is payable.

^{††}Wi-Fi hotspot (up to 4G LTE) includes complimentary wireless data trial that begins at the time of Wi-Fi hotspot activation and expires at the end of 3 months or when 3GB of data is used, whichever comes first. Afterwards, additional data bundles can be purchased from Vodafone. Please refer to their website for details of their data packages. To take advantage of the built-in Wi-Fi hotspot capability, a 2019 Ford vehicle must come with the appropriate hardware, and a data plan is required. Data coverage and service is not available everywhere and terms of your data plan, including applicable message and data rates, may apply.

^{†††}Ford Data Services[™] and Ford Telematics[™] require a valid contract and account subscription. Available to eligible business customers.

Please note: Full SYNC 3 smartphone integration only available with iPhone 5/Android 5.0 (Lollipop) or higher. Some SYNC 3 functions require a data connection, so mobile data charges will apply. To check whether Apple CarPlay and Android Auto are available in your market, please check official Apple CarPlay and Android Auto websites for the latest information.

[†]Ford Emergency Assistance is an innovative SYNC feature that uses a Bluetooth[®]-paired and connected mobile phone to help vehicle occupants initiate a call to the local Communications Centre, following a vehicle crash event involving an airbag deployment or fuel pump shut off. The feature operates in more than 40 European countries and regions.

Big on space, big on choice

Optimised loadspace.

Choose from two wheelbase lengths and two bodystyles to create a load capacity from 1.2 cu.m to 3.6 cu.m, with a potential payload of up to 865 kg (please refer to Weights and loads section for more information).

- Full-height, full-width glazed or unglazed steel bulkhead (Van)
- Moveable full-height, full-width mesh bulkhead (Double Cab-in-Van)
- Load-through bulkhead can accommodate 3.0-metre long items (L1 Van), or 3.4-metre long items (L2 Van)
- Room for up to four 8'x4' boards (L2 Van)
- Sliding kerb side load door (standard on Van)
- Twin sliding side load doors (option on Van, standard on Double Cab-in-Van)
- Single front passenger seat (Van and Double Cab-in-Van)
- Two first row seats and three second row seats (Double Cab-in-Van)



Cargo or passengers? You don't have to choose

A choice of seating configurations, for two to five people, offers a high level of flexibility between loadspace and passenger accommodation.

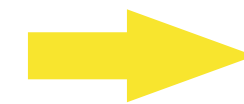
3.0 m/3.4 m

Load length with load-through bulkhead

Carry items up to 3.0 metres long in the L1 Van with the ingenious load-through bulkhead. L2 models can hold 3.4-metre long items. (Option)

250,000 door shuts

We opened and closed the doors and bonnet over 250,000 times in real-world conditions to help ensure they won't let you down.

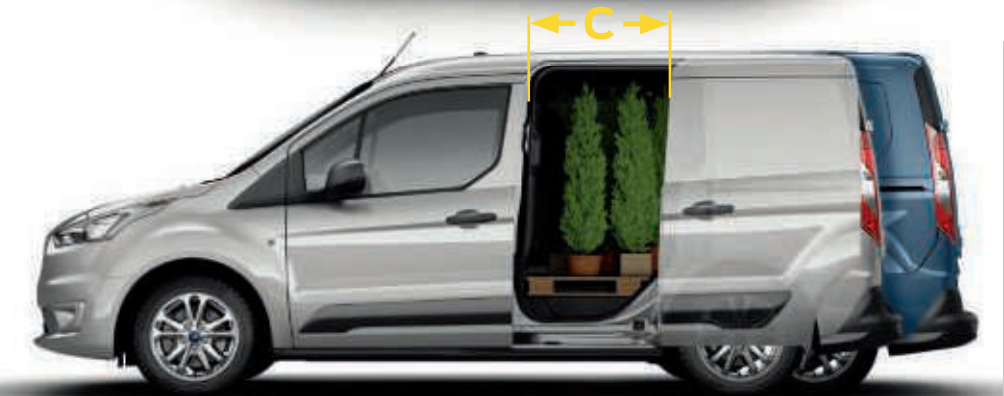


Easy loadspace access

Access to the flexible loadspace is easy, thanks to wide-opening doors and a low loading height.

Dimensions below are for Transit Connect Van. For DCiV, please refer to Connect Dimensions chart.

A: 1,249 mm
B: 1,269 mm
C: 433 mm (L1)/660 mm (L2)



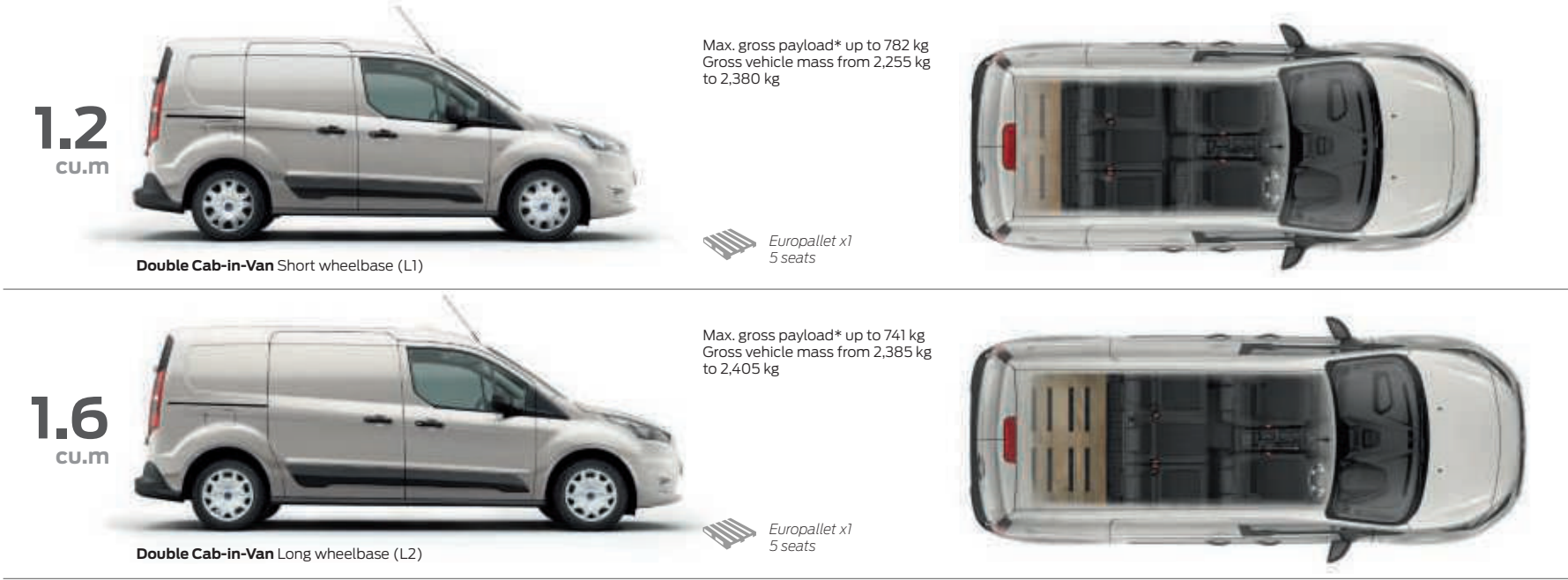
L1 4,425 mm
 L2 4,825 mm

H11,830 mm
 H21,828 mm

Van load capacity and payload



Double Cab-in-Van load capacity and payload



*Gross Payload = Gross vehicle mass less kerb mass. All kerb masses quoted in this brochure are for models with minimum equipment. Any additional options specified on the vehicle will reduce the payload accordingly. It must be noted that actual weight will always be subject to manufacturing tolerances which may result in payload variations between the quoted figures and actual weight. NB: It is the responsibility of the vehicle operator to ensure their vehicles are legally compliant for road use.



8'x4' bulkhead
L2 Van models can carry up to four 8'x4' sheets of material against a specially-designed steel bulkhead. (Standard on Van)



Flexible passenger's seat
The centre seat folds flat and has a lift-up cushion and underseat storage. The outer seat base folds cinema-style so tall items may be carried. (Option on Van)



Movable mesh bulkhead
Full mesh bulkhead separates loadspace and passenger space, and offers a choice of configurations to suit your changing needs. (Standard on Double Cab-in-Van)

Choose the engine that's right for you.

Petrol or diesel? We've made both options equally tempting.

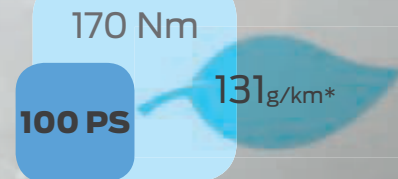
New Transit Connect brings bold design and fuel-efficient engines with the all-new 1.5 litre Ford EcoBlue diesels and a 1.0 litre Ford EcoBoost petrol with cylinder deactivation. Combining power, durability and efficiency, it's the ideal partner for your business. What's more, all versions comfortably meet the latest Euro Stage 6.2 emissions regulations, with CO₂ emission test figures from just 118 g/km[†]. For customers who require a petrol option, Transit Connect offers an advanced new version of the multi-award winning 1.0 litre Ford EcoBoost engine, which incorporates major changes to the cylinder head, fuel injection and emission-control systems to provide further improvements in fuel efficiency. This includes a cylinder deactivation system which enables the engine to run on two cylinders at low loads, to reduce pumping losses and improve economy.

1.0L Ford EcoBoost petrol

With turbocharging, direct petrol injection and variable valve timing, our award-winning Ford EcoBoost engine delivers the same performance as a larger Ford engine, but with better fuel economy and lower emissions..

1.5L Ford EcoBlue diesel

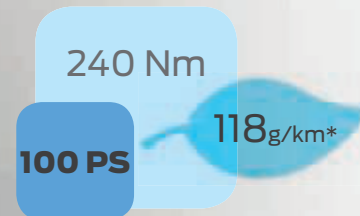
New Transit Connect is available with a choice of advanced, high-performance Ford EcoBlue diesel engines. All versions combine plenty of pulling power for shifting heavy loads, with low running costs.



Efficient

1.0L Ford EcoBoost petrol engine

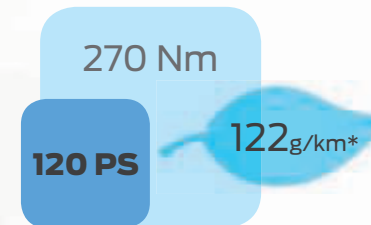
Our latest multiple award-winning petrol engine delivers an impressive blend of efficiency and performance. Compact, lightweight and refined, it is ideally suited to shorter journeys and city driving.



Balanced

1.5L Ford EcoBlue diesel engine

The new Ford EcoBlue 100 PS (74 kW) diesel engine strikes a great performance balance. It delivers the flexible power needed for long distance driving, coupled with low emissions and excellent fuel consumption.



Powerful

1.5L Ford EcoBlue diesel engine

The new Ford EcoBlue 120 PS (88 kW) diesel engine develops 270 Nm of torque. This makes it the ideal choice for carrying heavy loads and towing, while delivering outstanding fuel efficiency, from as low as 56.5 MPG* combined.

*Calculated Drive Cycle test figures. See Fuel and Performance section for more information

***Powered by* FORD EcoBoost**

[†]Calculated Drive Cycle test figures for Transit Connect L1 Leader Van with 100 PS Ford EcoBlue diesel engine.



Greater performance, fewer emissions.*

New Transit Connect's Ford EcoBlue diesel engines comply with stringent Euro Stage 6.2 emissions standards. A Selective Catalytic Reduction (SCR) system uses AdBlue®, a urea/water-based fluid to convert NOx emissions in the exhaust gas into nitrogen and water while the diesel particulate filter is designed to capture 99% of emitted solid particulates from the vehicle's exhaust.

*Comparison made to previous model Transit Connect.



Cost of ownership

Exemplary performance that is surprisingly cost-effective.

Quality and durability are built into new Transit Connect at every step. So, after many years of service, it will feel as good – and drive as beautifully – as it did the day you first took delivery.

Key cost-saving technologies*

- Choice of advanced, award-winning Ford EcoBoost petrol or Ford EcoBlue diesel engines for exceptional fuel economy and low CO₂ emissions
- Auto Start-Stop (standard)
- Shift Indicator (standard)
- Speed Limiter (option)
- Acceleration Control (option on Van with manual transmission)
- 12-year perforation warranty provides reassurance against perforation of the bodywork from the inside of the panel

**Some technologies shown are available on selected models only. Please refer to the specification section for more details.*



Auto Start-Stop

When you stop at traffic lights or your vehicle is idling in a queue, Auto Start-Stop can automatically switch off the engine (while still supplying power to essentials like the headlights, air-conditioning, radio and the Ford SYNC system). When you're ready to move, just depress the clutch and select first gear as usual, or press the accelerator on an automatic, and the system restarts. Auto Start-Stop is particularly effective in city streets, where it can potentially help to reduce fuel consumption and exhaust emissions. (Standard)



Acceleration Control

A unique engine calibration for diesel models with manual transmission, designed to limit acceleration and help reduce fuel consumption when the vehicle is lightly laden. (Option)

Model shown is Transit Connect Trend Van L2 in Chrome Blue metallic body colour (option) and alloy wheels (option).



Ford Easy Fuel capless refuelling system

No dirty fuel caps to touch. Plus, Ford Easy Fuel with its unique safeguard ensures nobody accidentally fills up with the wrong fuel. (Standard)

AdBlue®

New Transit Connect's Ford EcoBlue diesel engines are fitted with a selective catalytic reduction system to help reduce exhaust emission levels by injecting diesel exhaust fluid (AdBlue®) into the exhaust system. Ford EcoBlue diesel models have an additional 17-litre AdBlue® tank, with a facia-mounted warning light that indicates when the tank needs to be refilled. (Standard on Ford EcoBlue diesel models)



Driver assistance technologies

Combining information from camera and radar technology, new Transit Connect can help in various driving situations. Optional features including Intelligent Speed Assist to help you keep within the speed limit, and Driver Alert that can warn you when to take a break, Transit Connect is always ready to lend a hand.

Driver Alert²⁾

Designed to warn you if the system detects driving behaviour that indicates a drop in alertness levels. Initially, a warning icon is displayed in the instrument cluster, followed by an audible chime if driving alertness further declines. (Option as part of a pack)



Cruise control with Adjustable Speed Limiter²⁾

Set your desired speed and the system will maintain the pace until it's deactivated via a button on the steering wheel or by pressing the clutch or brake pedal. **Adjustable Speed Limiter²⁾** is particularly helpful in towns and cities. It lets you set your chosen maximum speed and the vehicle then stays within that limit so you can keep your eyes on the road. When you need to go faster, just press the accelerator firmly to override the system. (Standard on Sport and Limited, option on other series)



Distance Indication

An instrument cluster display continuously indicates the distance to the vehicle in front. The system illuminates a system of coloured icons depending on the proximity settings you've chosen. Distance Alert can notify you with a red warning symbol if you get too close to the vehicle ahead. (Option)



Intelligent Speed Assist²⁾ with Traffic Sign Recognition[®]

Detects speed limits, including variable limits, and no-overtaking signs via the forward-facing camera and shows them in the cluster display. Intelligent Speed Assist uses the information to help you keep within the prevailing speed limit¹⁾. (Option)

²⁾Uses sensors.

¹⁾Speed limit may vary according to road and vehicle size. Driver is responsible for adhering to the speed limit at all times.

²⁾Driver assistance feature.

Model shown is a Transit Connect Limited van with SYNC 3 (option), wireless charging pad (option) Dual-zone Electronic Automatic Temperature Control (DEATC) (option), and Intelligent Speed Assist (option).



Parking made simple

When you need to parallel park, or reverse into a perpendicular space, trust Active Park Assist to help. Simply push a button and the sensors of this innovative system locate a suitable space as you drive past. Then it is designed to automatically steer you in, while you operate the accelerator, brake and gears, following the on-screen and audible prompts. It can even help you pull out of a parallel space too. (Option)

Smart parking

Active Park Assist helps you find a space.

And get in. And get out.

Active Park Assist will park your Transit Connect for you. The system can locate a suitable parking space and automatically steer you into a parallel or perpendicular space. It can also manoeuvre you out of parallel spaces too. All you need to do is operate the accelerator, brake and gears. (Option)



Let Transit Connect park itself

Once activated, Active Park Assist can help you find a suitable parking space and will automatically steer you in – and out – as required. (Option)

²⁾Driver assistance feature.



Parking distance sensors, front and rear²⁾

No need to pass by those more challenging parking spaces. An audible warning helps you judge the distance between your vehicle and obstacles at the front and rear, for easier parking and manoeuvring. (Option) (Rear parking sensors standard on Sport and Limited)

Model shown is a Transit Connect Trend van L2 with alloy wheels (option) and rear parking sensors (option).



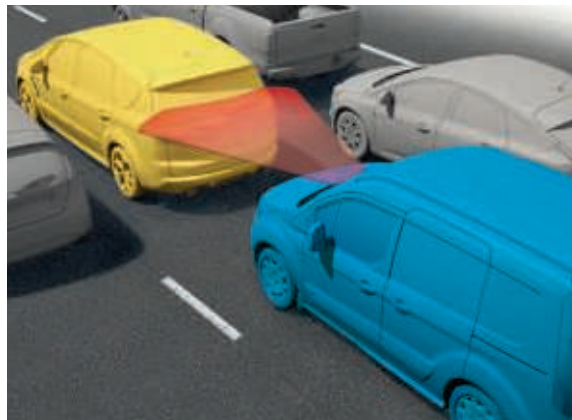
Anticipate

Pre-Collision Assist^{†2)} with Active Braking, Pedestrian Detection, Distance Indication and Distance Alert.

The new Transit Connect looks out for you and those around you.

Pre-Collision Assist (option) is designed to detect vehicles and pedestrians in the road ahead, or who could cross the vehicle's path, and warns you of their presence.

If a pedestrian (1) steps off the pavement, or a vehicle (2) or cyclist (3) slows down or stops, the system is designed to calculate whether you are taking sufficient action to slow down in time to avoid an accident. If you fail to respond, the system automatically applies the brakes. This technology is designed to help reduce the severity of accidents, or help avoid them altogether, and functions at speeds of up to 80 km/h (50 mph). (Option)



Active Braking⁰²⁾

Active Braking uses sensors to monitor the road ahead. When it detects a possible collision at speeds of up to 80 km/h (50 mph), it sends you a warning message on the instrument panel. If you don't react, the system can automatically apply the brakes to help you avoid or reduce the severity of a frontal collision. (Option)



Lane-Keeping System (Lane-Keeping Alert and Lane-Keeping Aid)⁰²⁾

Lane-Keeping System uses a forward-looking camera to detect if you're unintentionally drifting out of lane. Lane Keeping Aid can provide steering torque assistance to help guide you back to the correct lane. Lane-Keeping Alert then warns you by vibrating the steering wheel and displaying a visual warning if you're slow to react or don't respond. The technology is designed for multi-lane roads, such as motorways, and will automatically deactivate at speeds below 65 km/h (43 mph) or can be turned off manually. (Option)



Ford Blind Spot Information System (includes Cross Traffic Alert)⁰¹⁾

As another vehicle – a car, van or lorry – enters your blind spot, it is designed to alert you with a discreet warning light built into the driver's and passenger's door mirrors.

Cross Traffic Alert scans left and right as you reverse from a perpendicular parking space. If a moving vehicle or other hazard is detected, the system can alert you with visual and audible warnings. (Option on Leader (Van), Trend (Van), Sport and Limited)

Pre-Collision Assist^{†2)} with Pedestrian Detection

Monitors your proximity to other vehicles and pedestrians, and can alert you to a potential collision. (Option, and included with Adaptive Cruise Control)



Side Wind Stabilisation⁰¹⁾

Helps you to stay in lane in strong, gusty conditions by using the ESC system to sense when the vehicle is being affected by crosswinds. (Option)



⁰⁾Uses sensors.

¹⁾Safety feature. ²⁾Driver assistance feature.

[†]Designed to operate at speeds above 10 km/h.

Be confident

All-round protection for peace of mind.

1. Electronic Stability Control (ESC)^{①)}

ESC^{①)} is designed to help you maintain control in extreme driving conditions. It senses when you are deviating from your chosen line and aims to keep you on track by automatically regulating braking and engine output. (Standard)

2. Emergency Brake Assist^{①)}

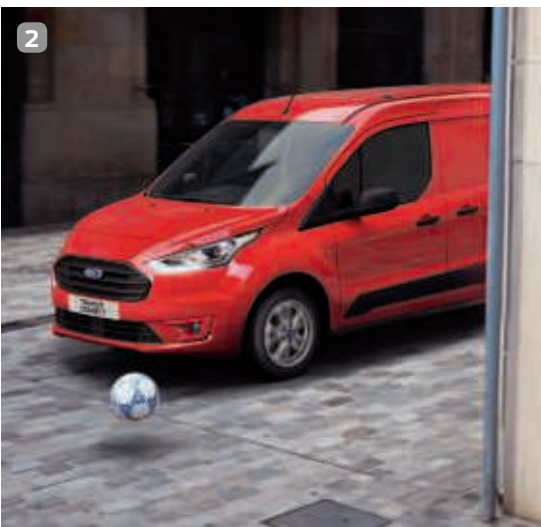
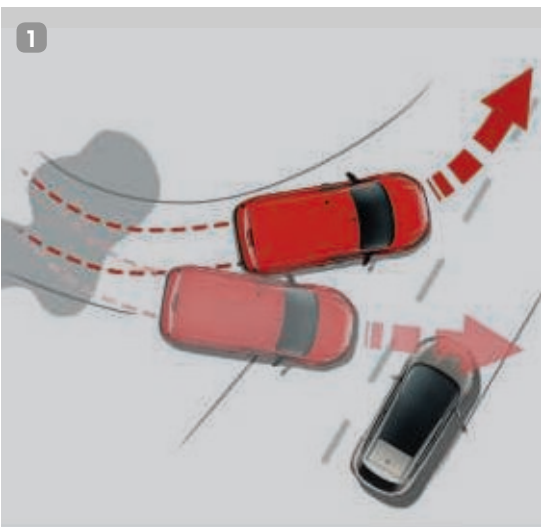
Designed to recognise an emergency braking situation and increases the pressure within the braking system to provide optimum stopping power. (Standard)

3. Load Adaptive Control^{①)}

Designed to adjust the responses of the ESC^{①)} system to compensate when the vehicle is unladen, partially- or fully-laden. (Standard)

4. Occupant safety

Driver and passenger[®] front airbags with seat-mounted side, head and thorax airbags and side curtain airbags^{①)}. (Driver's airbag standard, all other airbags optional)



Trailer Sway Control^{①)}

When it detects trailer sway, the system is designed to reduce engine torque and apply the brakes to the appropriate wheel(s) to help maintain control. (Standard, but activated with optional Ford trailer tow attachment)

^{①)}Uses sensors.

^{①)}Safety feature

[®]Note: A rear-facing child seat should never be placed in the front passenger seat when the Ford vehicle is equipped with an operational front passenger's airbag.

Features to make your life easier



1. FordPass Connect modem

FordPass Connect and the FordPass App deliver a suite of connected services in your van and via your smartphone. The new FordPass Connect modem* makes your journeys easier. Live Traffic (two year trial)** delivers up-to-date traffic information to your SYNC 3 Navigation system. The on-board Wi-Fi (three month trial) allows you and your passengers to connect effortlessly to the internet with up to ten devices.*** (Option)

Download the FordPass App so that you can control a host of new features from your smartphone. Remotely lock and unlock your van, monitor your fuel level, tyre pressures and find your way back to your parked van on a map.

2. Ford Power starter button

Start the engine at the press of a button. Just keep the key fob with you in your pocket or bag. (Standard on Sport and Limited)

3. 230 V power socket

A handy 150 Watt 230 V power socket, located between the driver's and passenger seats, can be used to charge tools, laptops or other electrical equipment without the need for special adaptors. (Option, not available on DCiV)

4. Automatic transmission

The 100 PS and 120 PS Ford EcoBlue diesel engines are available with a new 8-speed automatic transmission, making Transit Connect even easier and more relaxing to drive. (Option on selected models)

5. Xenon headlights with static cornering lights and LED daytime running lights

Transit Connect's new xenon headlights offer enhanced light quality over halogen bulbs, while using less energy. Static cornering lights, mounted in each headlight, illuminate corners during turns. Whenever outside light levels dictate, automatic headlights switch on to help keep the road ahead well lit. (Option on Trend, Sport and Limited)

FordPass Connect is an optional extra. The on-board modem will be connected at the time of vehicle delivery. You may choose to opt in/out of certain data sharing. **Live Traffic access is complimentary for the first 2 years following the registration of a new Ford featuring SYNC 3 with navigation.; thereafter a licence fee is payable. *Wi-Fi hotspot (up to 4G LTE) includes a complimentary wireless data trial that begins at the time of activation and expires at the end of 3 months or when 3GB of data is used, whichever comes first. Afterwards a subscription to Vodafone is required, refer to their website for detail of their data packages. To take advantage of the built-in Wi-Fi hotspot capability, a Ford vehicle must come with the appropriate hardware, and a data plan is required. Data coverage and service is not available everywhere and terms of your data plan, including applicable message and data rates, may apply.*

Model shown is a Transit Connect Limited L2 van with Xenon headlights (option).



Leader

Exterior features

- 16" steel wheels painted Shadow Silver
- Kerbside load door (on Van)
- Ford Easy Fuel capless refuelling system
- Remote central locking
- Spare wheel (van only; DCiV has a tyre inflator kit)

Interior features

- DAB Radio with MP3 capability, Bluetooth®and USB connectivity, steering wheel remote audio controls and four speakers
- Electrically-operated front windows with one-shot down on driver's side
- Rake and reach adjustable steering wheel
- Trip computer
- Single passenger seat
- 12-volt AUX power point
- Dual cup holders
- Instrument panel stowage box
- DIN-compliant cargo tie-down hooks
- DIN-compliant full width steel bulkhead (Van only. DCiV gets a moveable mesh bulkhead)
- Overhead stowage

Bodystyles

- Van
- Double Cab-in-Van (DCiV)

Options available

- Dual passenger seat with load through bulkhead (Van only)
- Dual side load doors (Van only; standard on DCiV)

Engines

- 1.0 Ford EcoBoost petrol 100 PS (74 kW) – Van/DCiV
- 1.5 Ford EcoBlue diesel 75 PS (55 kW) – Van/DCiV
- 1.5 Ford EcoBlue diesel 100 PS (74 kW) – Van/DCiV
- 1.5 Ford EcoBlue diesel 120 PS (88 kW) – Van/DCiV

Model shown is a Ford Transit Connect Leader in Magnetic metallic body colour (option).

Note The Bluetooth® word mark and logos are owned by the Bluetooth SIG, Inc. and any use of such marks by Ford Motor Company Limited and its associated companies is under licence. Other trademarks and trade names are those of their respective owners.



Trend

Exterior features in addition to Base

- 16" steel wheels with full wheel covers
- Body colour front bumper
- Body colour rear bumper end caps
- Front fog lights
- Electrically-operated and heated door mirrors
- Quickclear heated windscreen and washer jets

Interior features in addition to Base

- DAB Radio with 4.2" TFT display including message centre, four speakers, AUX and MP3 capability, Bluetooth® and Voice Control and audible text messaging, USB and Privacy mode
- Front interior light with two map-reading lights
- Plastic easy-clean cargo floor liner (van only)
- Driver 8-way adjustable seat



Series overview Trend 26-27

Bodystyles

- Van
- Double Cab-in-Van (DCi)

Engines

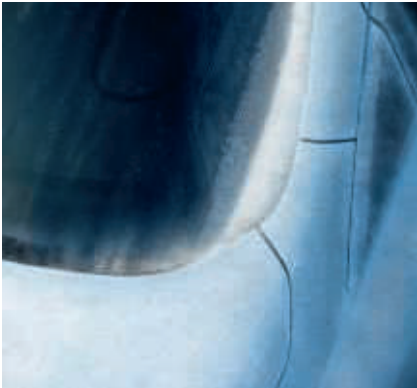
- 1.0 Ford EcoBoost petrol 100 PS (74 kW) – Van/DCiV
- 1.5 Ford EcoBlue diesel 75 PS (55 kW) – Van
- 1.5 Ford EcoBlue diesel 100 PS (74 kW) – Van/DCiV
- 1.5 Ford EcoBlue diesel 120 PS (88 kW) – Van/DCiV

Options available

- Manual air conditioning
- Rear parking sensors
- Dual passenger seat with load through bulkhead (Van only)



Front fog lights
(Standard)



Quickclear heated windscreen
(Standard)

Model shown is a Ford Transit Connect Trend in Kapoor Red metallic body colour (option).

Note The Bluetooth® word mark and logos are owned by the Bluetooth SIG, Inc. and any use of such marks by Ford Motor Company Limited and its associated companies is under licence. Other trademarks and trade names are those of their respective owners.

Limited

Exterior features in addition to Trend

- 16" 5x2-spoke alloy wheels, painted Sparkle Silver
- Body colour bodyside mouldings, door handles and door mirrors
- Automatic headlights and rain-sensing wipers
- Rear parking distance sensors
- Static cornering lights
- Power fold and heated door mirrors
- Perimeter alarm (Category 1)

Interior features in addition to Trend

- Manual air conditioning
- Cruise control with Adjustable Speed Limiter
- Heated driver's and single passenger seat
- Ford Power starter button
- Door handles with chrome finish
- 4-spoke leather-trimmed multifunction steering wheel

Bodystyle

- Van

Engines

- 1.5 Ford EcoBlue diesel 120 PS (88 kW)
 - Van

Options available

- Satellite Navigation
- Adaptive Cruise Control



Leather-trimmed multifunction steering wheel
(Standard)



16" 5x2-spoke alloy wheel, painted Sparkle Silver, includes locking wheel nuts
(Standard)



Sport

Exterior features in addition to Limited

- 16"5-spoke alloy wheels, painted Dark Stainless with locking wheel nuts
- Full front and rear body styling kits
- Sport stripe kit front, rear and sides
- Aluminium roof rails
- Front mud flaps with rear wheel arch air deflectors
- Body colour rear bumper with chrome rear bumper moulding strip

Interior features in addition to Limited

- Dual-zone Electronic Automatic Temperature Control (DEATC) air conditioning
- Partial leather heated driver's and single passenger seats



Bodystyle

- Van

Engine

- 1.5 Ford EcoBlue diesel 120 PS (88 kW)

Options available

- Satellite Navigation
- Xenon headlamps with LED Daytime Running Lamps
- Active Park Assist



16" 5-spoke alloy wheel, painted Dark Stainless, includes locking wheel nuts (Standard)



Partial leather seat trim (Standard)

Model shown is a Ford Transit Connect Sport Van L1 in Chrome Blue metallic body colour (option).

Colour and trim

Choose the colour and trim that best reflects your business brand.

1. Leader
Insert: Racer in Dark Palazzo Grey
Bolster: City Fabric in Ebony

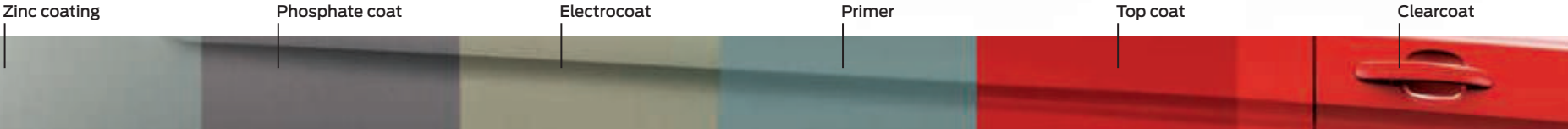
2. Leader - option
Insert: Crosshatch in Dark Palazzo Grey
Bolster: Salerno Vinyl in Ebony

3. Trend
Insert: Capitol in Ebony
Bolster: City Fabric in Ebony

4. Limited
Insert: Ligne in Dark Palazzo Grey
Bolster: Marl/City Fabric in Ebony

5. Sport
Insert: Dynamo in Ebony
Bolster: Salerno in Ebony

12-year perforation warranty
The Transit Connect owes its durable exterior to a thorough multi-stage painting process. From the wax-injected steel body sections to the hard-wearing top coat Transit Connect will retain its good looks for many years to come.



Frozen White
Solid body colour



Blazer Blue
Solid body colour



Race Red
Solid body colour



Kapoor Red
Metallic body colour*



Moondust Silver
Metallic body colour*



Chrome Blue
Metallic body colour*



Diffused Silver
Metallic body colour*



Magnetic
Metallic body colour*



Agate Black
Metallic body colour, from January 2020*

Note The images used are to illustrate body colours only and may not reflect the vehicle described. Colours and trims reproduced within this brochure may vary from the actual colours, due to the limitations of the printing processes used.
*Metallic and mica body colours are options, at extra cost.

Personalise

Alloy wheels

A choice of 16" alloy wheels are available with locking wheel nuts.

Q-Top® (Q-Tech) roof gallery

Easily enhance the load capacity of your Ford. The heavy-duty roof gallery is designed to carry a wide variety of bulky cargo. (Accessory)

Q-Top® (Q-Tech) ladder roller for Q-Top® (Q-Tech) roof gallery

The ladder roller makes loading and unloading your ladder easier when transporting it on your Q-Top+ roof gallery. (Accessory)

Roof base carrier, lockable

A roof carrier is the base for various roof transportation attachments. The roof carrier can be extended with a fourth bar for L2 models. (Accessory)



Thule® Professional roof attachments

A range of roof attachments is available, including modular attachments, such as (sliding) ladder holder, load stops, roller, eye bolt and ratchet tie-down. (Accessories)

Rear window protection grille

Helps prevent interior and exterior damage, without obscuring the driver's view out of the rear window. (Accessory)

Rear ladder

Provides easy access to the roof for convenient access to your roof load. (Accessory)

ClimAir® wind deflectors

Gives you a more comfortable drive with the front windows open, even during light rain. (Accessory)

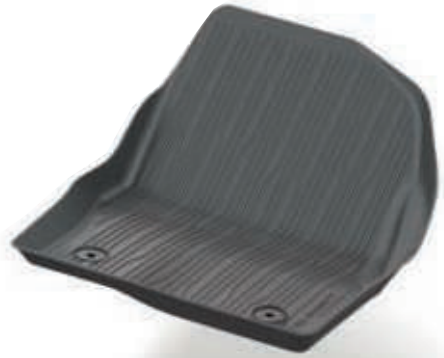
Xvision® parking distance sensors

Make difficult manoeuvres easy with Xvision parking distance sensors. An audible warning helps you to judge parking distances. (Accessory)

Bosch® reverse warning device

Designed with safety in mind, this reverse warning device helps to alert pedestrians with an acoustic signal when you are reversing. (Accessory)

Note Technical information for vehicle converters can be found online via the Body and Equipment Mounting Manual at www.etis.ford.com ; go to >information > >vehicle conversions.



Rubber floor mats

Tray style rubberised all-weather floor mats are tailor-made to fit and help to protect against dirt and damp. The driver's mat is securely fixed directly onto the vehicle's floor to help prevent it from slipping. (Accessory)



Tow bar, fixed or detachable

Providing extra transport and stowage capability. Both a fixed and detachable tow bar are available. The tow bar can tow up to 1500 kg* depending on engine (check with your Ford Dealer for further details).)

*Towing and load capacity depends on engine and vehicle series, please refer to vehicle weight and load specifications.



Mud flaps

Contoured mud flaps help to protect the bodywork of your Ford Transit Connect Van from stone chips and road spray (excludes Sport Van).

♦Item covered by third party supplier's warranty, please see back cover for details.
For more information and to view the full range accessories visit www.ford.co.uk/accessories
Fitment of accessories may have an impact on your vehicle's fuel consumption.
For a range of Ford branded merchandise – visit www.fordlifestylecollection.com



Our business is to keep your business moving.

FORD BUSINESS SERVICE

Efficiency, accuracy and convenience are at the heart of the Ford commercial vehicle service promise. Therefore, whether it is servicing, maintenance or repair you need, be sure to come and see us.

- Available from all Transit Centres and Transit Service dealers
- While-you-wait servicing by prior appointment
- Late night servicing available at least once per week
- Priority treatment for urgent repairs
- Vehicle off the road repairs (VOR)*
- Collection and delivery**
- Testing and MOTs
- Transparent pricing
- Genuine Ford parts quality
- Ford-trained technicians
- Interim checks for optimum vehicle performance
- Service Activated Roadside Assistance†
- Ford Protect packages to suit you
- One Call to access all the Ford services you need

For more information and to find your nearest participating Ford Commercial Vehicle Dealer, visit the aftersales support section at www.ford.co.uk/transit24

Commercial Vehicle Finance

When it comes to financing your Ford Commercial Vehicle, our size and expertise means we're well placed to provide you with a wide range of finance products.

Ford Credit®: Provides a range of finance plans for Commercial Vehicle customers interested in owning their vehicle.

Ford Lease®: Specialises in contract hire and leasing and provides an alternative range of finance plans which can be tailored to suit your business.

FORD PROTECT

Commercial Extended Warranty

Extend your warranty up to 5 years (from date of registration), with Ford Protect available at participating Ford Dealers.

Extend your standard 3-year warranty and enjoy worry-free motoring for many years to come. Ford Protect provides a range of key benefits including:

- Extended duration and mileage
- Cover against unexpected repair costs
- Protection on trips abroad
- With a Ford Protect Plan, the price of parts and labour are guaranteed for the length of your plan
- Helps prolong the lifespan of your Ford vehicle

Helps protect your vehicle resale value

Ford Protect terms and conditions apply for further information please call 03702 416 726.

*Repairs will start on the same working day (as long as you bring your vehicle in before 3pm), or at least within 24 hours of its arrival. If we need to order parts, we'll begin work the day they're delivered. 'Vehicle off road' repairs should be completed within 24-hours.

**Your Transit Centre can arrange to collect your vehicle and deliver it back to you after service or repairs, so you can get on with running your business. By arrangement and limited to a specific mileage radius of the dealer. Contact your local dealer to discuss your requirements.

†Available at participating Dealers only. Roadside Assistance is activated automatically at every routine service with coverage extended valid from the date of service for 12 months, or until the next service is due, whichever comes first. See Ford.co.uk/roadsideassistance for more information.

Important Information:

®Ford Credit: Finance subject to status. Guarantees may be required. Freepost Ford Credit.

Ford Credit is a trading style of FCE Bank plc. which is authorised by the Prudential Regulation Authority and regulated by the Financial Conduct Authority and Prudential Regulation Authority under firm reference number 204469.

®Ford Lease: Ford Lease is provided by ALD Automotive Ltd, trading as Ford Lease, Oakwood Drive, Emersons Green, Bristol, BS16 7LB. ALD Automotive is registered in England No. 987418. For the purposes of the Data Protection Act 1998 the data controllers in relation to any information you supply are Ford Motor Company Limited, FCE Bank Plc and ALD Automotive. Finance subject to status. Guarantees and indemnities may be required. ALD Automotive is authorised and regulated by the Financial Conduct Authority.

Van



Double Cab-in-Van



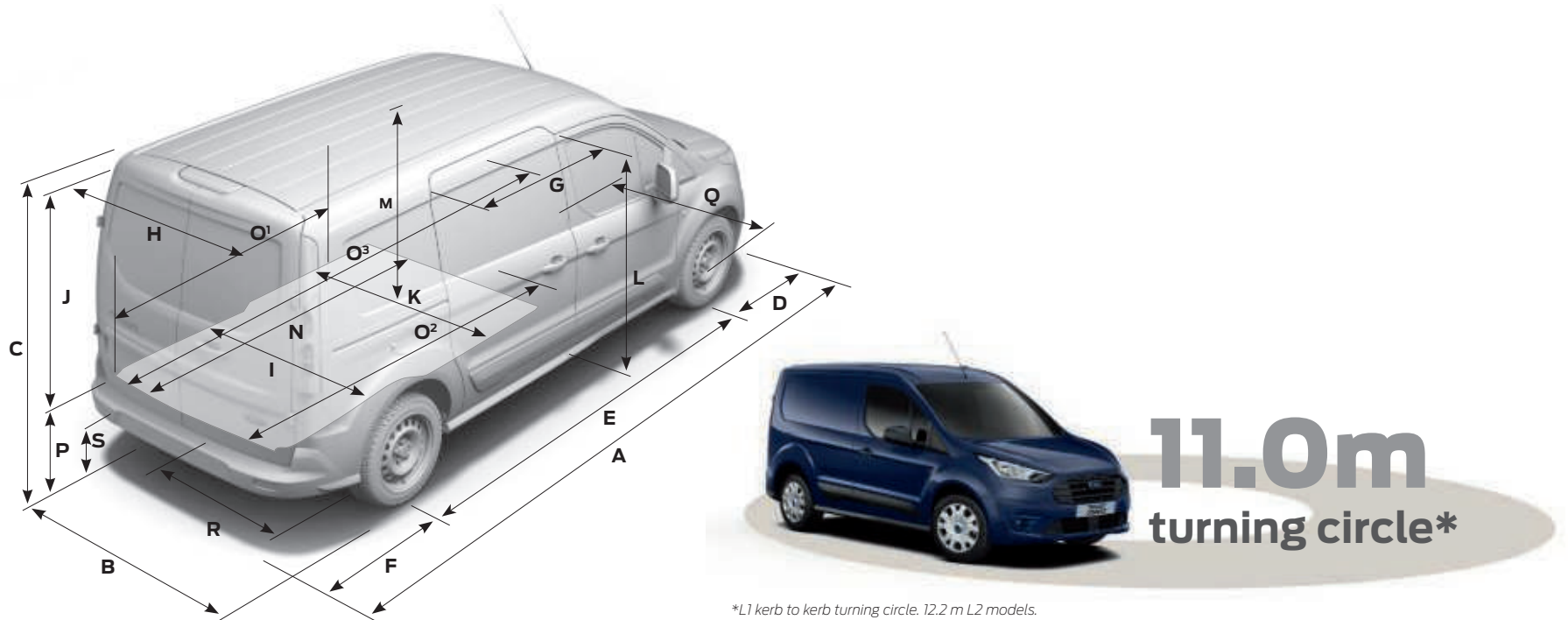
Note: DCIV loadcube shown with 2nd row bulkhead fitted.

Connect dimensions

	Transit Connect L1	Transit Connect L2	Transit Connect DCIV (Crew Van) L1	Transit Connect (Crew Van) L2
A Overall length	4425	4825	4425	4825
B Overall width (no mirrors)	1835	1835	1835	1835
B Overall width (mirrors folded)	1967	1967	1967	1967
B Overall width (mirrors unfolded)	2137	2137	2137	2137
C Overall height (unladen)	1830	1828	1819	1820
D Front overhang	885	885	885	885
E Wheelbase	2662	3062	2662	3062
F Rear overhang	878	878	878	878
G Side door entry width	612	839	612	839
G Side door entry width (Van with bulkhead)	433	660	–	–
H Rear door opening width below belt	1248	1248	1248	1248
I Loadspace width between wheel arches	1249	1249	1193	1193
J Rear door opening height (at vehicle centreline)	1202	1156	1150	1154
K Max Loadspace width at floor	1543	1496	1533	1496
L Side door opening height	1228	1228	1228	1228
M Loadspace floor to roof	1269	1269	1237	1267
N Loadspace length maximum to bulkhead (DCIV with Bulkhead behind 2nd row seats)	1786	2152	861	1061
O¹ Loadspace length (with bulkhead, laden to belt line)	1558	1958	–	–
O² Loadspace length (back of front seat, at floor)	1831	2231	–	–
O³ Loadspace length (max, with load through bulkhead)	3000	3400	–	–
P Loading height (unladen)	599	599	593	586
Q Front track	1568	1568	1568	1568
R Rear track	1582	1582	1582	1582
S Ground clearance	148	149	144	144
Capacity				
Cargo volume behind bulkhead (VDA/SAE)	2.6/2.9 cu.m	3.2/3.6 cu.m	– /1.2 cu.m	– /1.6 cu.m
Cargo volume less bulkhead (SAE)	3.0 cu.m	3.7 cu.m	–	–
Cargo volume less bulkhead, with front seat folded (SAE)	3.7 cu.m	4.4 cu.m	–	–

	Transit Connect L1	Transit Connect L2	Transit Connect DCIV (Crew Van) L1	Transit Connect (Crew Van) L2
Turning circle (m)				
Kerb to kerb	11.0	12.2	11.0	12.2
Wall to wall	11.7	12.5	11.7	12.5
Additional information				
Interior – Front				
Effective headroom	1190	1190	1190	1190
Maximum effective leg room	1027	1027	1074	1074
Shoulder room	1464	1464	1464	1464
Hip room	1376	1376	1376	1376

L1 = Short wheelbase, **L2** = Long wheelbase. All dimensions shown in mm are subject to manufacturing tolerances and refer to minimum specification models and do not include additional equipment. These illustrations are for guidance only. Dimensions may vary dependent on the model and equipment fitted.



Get the most from your new Ford

We want to help you get the most from your new Ford. And to do that, you need to know how much it is designed to carry safely, both in terms of payload and load volume. Your Ford Transit Centre can provide professional advice on important specification aspects, and help to find the right van for your budget and business needs.

The Ford Transit Connect is designed to carry cargo – and lots of it

Choosing a new van is an important decision with lots of factors to be considered. While some aspects, like selecting the most appropriate derivative, identifying the intended primary use and determining loadspace compartment size are relatively simple, others, such as calculating payload are more complex.

Payload capacity

To calculate payload, you need to know two things: the vehicle's gross vehicle mass (GVM) and its kerb mass.

Gross Vehicle Mass (GVM)

GVM is the maximum permissible weight of the vehicle when loaded and ready to go – that includes the weight of the vehicle itself, ancillaries, driver and crew (assuming the industry standard weight of 75 kg/person), fluids, fuel tank 90% full (1 litre of diesel = approximately 0.85 kg), optional and aftermarket equipment, and cargo.

Kerb mass

Kerb mass is the weight of a standard-specification Base series vehicle, including fluids and fuel tank 90% full, but without the driver, crew or cargo. If you intend to load the vehicle close to its maximum capacity, it is recommended that you add a margin for error of 5% of the kerb mass to the kerb mass figure before calculating payload, to reduce the risk of overloading.

Payload is the difference between the two.

Gross vehicle mass minus kerb mass = payload

So, to help you choose the right vehicle for your needs, here are some more detailed explanations about the factors that can influence a vehicle's payload. These include, but are not limited to:

Driver and crew

We calculate the weight of the driver and crew based on the industry-standard weight of 75 kg/person. Remember that the driver and crew are not included in the kerb mass figure, so when a driver or crew boards the vehicle, its payload will be reduced accordingly.

Factory-fitted options

Most factory-fitted options will affect a vehicle's payload. For example, air conditioning can add approximately 13 kg to a vehicle's weight, and therefore reduce its payload accordingly.

Series

All kerb masses quoted in this brochure are for standard-specification models. Higher series models will generally weigh more than Base series due to the increased level of features and equipment.

Manufacturing tolerances

Variations in manufacturing and production processes mean that no two vehicles are likely to weigh exactly the same. It must be noted that actual weight will always be subject to manufacturing tolerances which may result in payload variations between the figures in this brochure and actual weight. NB: It is the responsibility of the vehicle operator to ensure their vehicles are legally compliant for road use.

Accessories and aftermarket conversions

It is important to think carefully about what to do with your vehicle after you take delivery. Any accessories fitted or aftermarket conversions to the vehicle may adversely affect its payload. Please speak to your Ford Transit Centre for more information and advice.

If payload is critical to your business, or if you plan to carry cargo at, or close to, the vehicle's maximum capacity, your Ford Transit Centre can help. Using their specialist expertise and knowledge, they can advise you on the exact specification of vehicle required to meet your individual business needs.

Configure your van to suit your job

Ford Commercial Vehicles are available with a wide range of standard and optional features. Your Ford Transit Centre can help you ensure that you specify the right vehicle features for your specific business needs, including technical items to aid aftermarket fitment of specialist equipment or conversion.

Weights and loads

Reality check. Making fuel economy figures more realistic.

From 1 September 2017, certain new vehicles will be type-approved using the Worldwide Harmonised Light Vehicle Test Procedure (WLTP) according to (EU) 2017/1151, as last amended, which is a new, more realistic test procedure for measuring fuel consumption and CO₂ emissions. From 1 September 2018 the WLTP will fully replace the New European Drive Cycle (NEDC), which is the current test procedure. During NEDC Phase-out, WLTP fuel consumption and CO₂ emissions are being correlated back to NEDC. There will be some variance to the previous fuel economy and emissions as some elements of the tests have altered i.e., same car might have different reported fuel consumption and CO₂ emissions.

To learn more about the changes, please visit www.ford.co.uk/owner/resources-and-support/fuel-economy

	Fuel	Transmission	Gross payload (kg) ⁹⁰	Gross vehicle mass (kg)	Kerb mass – excluding driver (kg) [★]	Front axle kerb mass (kg)	Rear axle kerb mass (kg)	Axle ratio ⁹⁰	Max. GTM (kg) with quoted axle ratio	Trailer plate (kg) Braked (unbraked)	CO ₂ emissions	Urban	Extra Urban	Combined
200 L1 Transit Connect														
Leader 1.0 Ford Ecoboost 100 PS (74 kW)	Petrol	6-speed manual	662	2090	1428	819	609	4.56	3250	1200 (735)	131	45.6 (6.2)	55.4 (5.1)	48.7 (5.8)
Leader 1.5 Ford EcoBlue 75 PS (55 kW)	Diesel	6-speed manual	651	2155	1504	888	616	3.68	3350	1200 (750)	117	57.6 (4.9)	67.3 (4.2)	62.8 (4.5)
Leader 1.5 Ford EcoBlue 100 PS (74 kW)	Diesel	6-speed manual	656	2160	1504	888	616	3.52	3500	1350 (750)	118	55.4 (5.1)	65.7 (4.3)	62.8 (4.5)
Trend 1.0 Ford EcoBoost 100PS (74 kW)	Petrol	6-speed manual	645	2090	1445	825	620	4.56	3250	1200 (740)	133	44.8 (6.3)	54.3 (5.2)	47.9 (5.9)
Trend 1.5 Ford EcoBlue 75 PS (55 kW)	Diesel	6-speed manual	655	2175	1520	893	627	3.68	3350	1200 (750)	117	57.6 (4.9)	67.3 (4.2)	62.8 (4.5)
Trend 1.5 Ford EcoBlue 100PS (55 kW)	Diesel	6-speed manual	650	2170	1520	893	627	3.52	3500	1350 (750)	118	55.4 (5.1)	65.7 (4.3)	62.8 (4.5)
Trend 1.5 Ford EcoBlue 120 PS (55 kW)	Diesel	6-speed manual	655	2170	1515	883	632	3.68	3590	1500 (750)	121	54.3 (5.2)	65.7 (4.3)	61.4 (4.6)
Limited 1.5 Ford EcoBlue 120 PS (88 kW)	Diesel	6-speed manual	718	2245	1528	900	628	3.68	3590	1500 (750)	122	54.3 (5.2)	65.7 (4.3)	61.4 (4.6)
Limited 1.5 Ford EcoBlue 120 PS (88 kW)	Diesel	8-speed automatic	579	2130	1551	934	618	3.80	3540	1500 (750)	138	47.1 (6.0)	58.9 (4.8)	54.3 (5.2)
Sport 1.5 Ford Ecoblue 120PS (88kW)	Diesel	6-speed manual	705	2225	1520	915	605	3.68	3590	1500 (750)	122	54.3 (5.2)	65.7 (4.3)	61.4 (4.6)
220 L1 Transit Connect High Payload														
Leader 1.5 Ford EcoBlue 75 PS (55 kW)	Diesel	6-speed manual	860	2370	1510	890	620	3.68	3350	1200 (750)	117	57.6 (4.9)	67.3 (4.2)	62.8 (4.5)
Leader 1.5 Ford EcoBlue 100 PS (74 kW)	Diesel	6-speed manual	865	2375	1510	890	620	3.52	3500	1350 (750)	118	55.4 (5.1)	65.7 (4.3)	62.8 (4.5)
Leader 1.5 Ford EcoBlue 100 PS (74 kW)	Diesel	8-speed automatic	876	2405	1529	914	615	3.8	3500	1350 (750)	133	49.6 (5.7)	58.9 (4.8)	55.4 (5.1)
Trend 1.5 Ford EcoBlue 100 PS (74 kW)	Diesel	6-speed manual	853	2380	1527	896	631	3.52	3500	1350 (750)	118	55.4 (5.1)	65.7 (4.3)	62.8 (4.5)
Trend 1.5 Ford EcoBlue 120 PS (88 kW)	Diesel	8-speed automatic	859	2405	1546	920	626	3.80	3540	1500 (750)	134	48.7 (5.8)	60.1 (4.7)	55.4 (5.1)
Trend 1.5 Ford EcoBlue 120 PS (88 kW)	Diesel	6-speed manual	863	2385	1522	886	636	3.68	3590	1500 (750)	121	54.3 (5.2)	65.7 (4.3)	61.4 (4.6)

L1 = Short wheelbase, **L2** = Long wheelbase. **Note:** All diesel engines include Diesel Particulate Filter (cDPF). **Kerb mass** = The weight of the complete vehicle and all equipment including 90% fuel and water, but without the payload, driver or any passengers. **GVM** = Gross vehicle mass, the total permissible all-up weight of a vehicle – i.e. with body, payload, ancillaries, fuel, oil, water, driver and passengers. **GTM** = Gross train mass, the total permissible all-up weight of a vehicle (see GVM) together with its trailer and load. ⁹⁰**Gross Payload** = Gross vehicle mass less kerb mass. All kerb masses quoted in this brochure are for models with minimum equipment. Any additional options specified on the vehicle will reduce the payload accordingly. It must be noted that actual weight will always be subject to manufacturing tolerances which may result in payload variations between this table of figures and actual weight. NB: It is the responsibility of the vehicle operator to ensure their vehicles are legally compliant for road use. ⁹⁰The declared fuel consumptions and CO₂ emissions for Stage 6 Light Duty Truck engines are measured according to the technical requirements and specifications of European Regulation (EC) 715/2007 and latest amendment. Fuel consumption and CO₂ emissions are specified for a vehicle variant and not for a single car. The applied standard test procedure enables a comparison between different vehicle types; the specification and options selected may have an effect i.e. on vehicle weight and therefore on the emissions and fuel economy of the vehicle and also may influence the figures that appear in the individual vehicle documentation. This information is not part of any product offer made. Real world fuel consumption can vary as the fuel efficiency of a vehicle is influenced by (individual) vehicle configurations, driving behaviour, use of technical equipment such as air conditioning, as well as other non-technical factors.

*Combined fuel consumption and CO₂ emissions for L1 Van (N1) with 1.5L Ford EcoBlue 100 PS with Manual Transmission and Auto Start-Stop as standard.



Weights and loads

Weights and loads												Fuel consumption in mpg (L/100 km) ⁰⁰⁰			
	Fuel	Transmission	Gross payload (kg) ⁰	Gross vehicle mass (kg)	Kerb mass – excluding driver (kg) [•]	Front axle kerb mass (kg)	Rear axle kerb mass (kg)	Axle ratio ⁰⁰	Max. GTM (kg) with quoted axle ratio	Trailer plate (kg) Braked (unbraked)	CO ₂ emissions	Urban	Extra Urban	Combined	
220 L1 Transit Connect Double Cab-in-van (Crew van)															
Leader 1.0 Ford EcoBoost 100 PS (74 kW)	Petrol	6-speed manual	736	2255	1519	856	663	4.56	3250	1200 (750)	134	44.1 (6.4)	54.3 (5.2)	47.9 (5.9)	
Leader 1.5 Ford EcoBlue 100 PS (74 kW)	Diesel	8-speed automatic	740	2355	1615	951	664	3.80	3500	1350 (750)	139	46.3 (6.1)	58.9 (4.8)	53.3 (5.3)	
Leader 1.5 Ford EcoBlue 100 PS (74 kW)	Diesel	6-speed manual	775	2375	1600	925	675	3.68	3500	1350 (750)	120	56.5 (5.0)	65.7 (4.3)	62.8 (4.5)	
Trend 1.0 Ford EcoBoost 100 PS (74 kW)	Petrol	6-speed manual	782	2305	1523	858	665	4.56	3250	1350 (750)	134	44.1 (6.4)	54.3 (5.2)	47.9 (5.9)	
Trend 1.5 Ford EcoBlue 100 PS (74 kW)	Diesel	6-speed manual	776	2380	1604	927	677	3.68	3500	1350 (750)	120	56.5 (5.0)	65.7 (4.3)	62.8 (4.5)	
Trend 1.5 Ford EcoBlue 120 PS (88 kW)	Diesel	8-speed automatic	741	2360	1619	953	666	3.8	3540	1500 (750)	139	47.1 (6.0)	58.9 (4.8)	53.3 (5.3)	
210 L2 Transit Connect															
Leader 1.0 Ford EcoBoost 100 PS (74 kW)	Petrol	6-speed manual	680	2165	1485	859	626	4.56	3250	1200 (750)	136	44.1 (6.4)	52.3 (5.4)	47.1 (6.0)	
Leader 1.5 Ford EcoBlue 75 PS (55 kW)	Diesel	6-speed manual	684	2260	1576	936	640	3.68	3350	1200 (750)	121	57.6 (4.9)	64.2 (4.4)	61.4 (4.6)	
Leader 1.5 Ford EcoBlue 100 PS (74 kW)	Diesel	6-speed manual	690	2255	1565	931	634	3.68	3500	1350 (750)	121	57.7 (4.9)	67.3 (4.2)	61.4 (4.6)	
Leader 1.5 Ford EcoBlue 120 PS (88 kW)	Diesel	6-speed manual	689	2255	1566	924	642	3.68	3590	1500 (750)	125	53.3 (5.3)	64.2 (4.4)	58.9 (4.8)	
Trend 1.0 Ford EcoBoost 100 PS (74 kW)	Petrol	6-speed manual	683	2195	1512	877	635	4.56	3250	1200 (750)	136	44.1 (6.4)	52.3 (5.4)	47.1 (6.0)	
Trend 1.5 Ford EcoBlue 100 PS (74 kW)	Diesel	6-speed manual	692	2285	1593	949	644	3.68	3500	1350 (750)	122	57.6 (4.9)	67.3 (4.2)	61.4 (4.6)	
240 L2 Transit Connect High Payload															
Leader 1.5 Ford EcoBlue 100 PS (74 kW)	Diesel	6-speed manual	834	2405	1571	933	638	3.68	3500	1350 (750)	121	57.6 (4.9)	67.3 (4.2)	61.4 (4.6)	
Leader 1.5 Ford EcoBlue 120 PS (88 kW)	Diesel	6-speed manual	833	2405	1571	926	646	3.68	3590	1500 (750)	125	53.3 (5.3)	64.2 (4.4)	58.9 (4.8)	
Leader 1.5 Ford EcoBlue 120 PS (88 kW)	Diesel	8-speed automatic	792	2375	1583	954	629	3.80	3540	1500 (750)	141	47.1 (6.0)	57.6 (4.9)	53.3 (5.3)	
Trend 1.5 Ford EcoBlue 100 PS (88kW) (Sport)	Diesel	6-speed manual	806	2405	1599	951	648	3.68	3500	1350 (750)	122	57.6 (4.9)	67.3 (4.2)	61.4 (4.6)	
Trend 1.5 Ford EcoBlue 120 PS (88 kW)	Diesel	6-speed manual	805	2405	1600	944	656	3.68	3590	1500 (750)	125	53.3 (5.3)	62.8 (4.5)	58.9 (4.8)	
Trend 1.5 Ford EcoBlue 120 PS (88 kW)	Diesel	8-speed automatic	770	2380	1610	971	639	3.80	3540	1500 (750)	141	47.1 (6.0)	57.6 (4.9)	53.3 (5.3)	
Limited 1.5 Ford EcoBlue 120 PS (88 kW)	Diesel	6-speed manual	675	2275	1600	952	648	3.68	3590	1500 (750)	125	53.3 (5.3)	62.8 (4.5)	58.9 (4.8)	
Limited 1.5 Ford EcoBlue 120 PS (88 kW)	Diesel	8-speed automatic	795	2405	1610	980	630	3.80	3540	1404 (750)	141	46.3 (6.1)	57.6 (4.9)	53.3 (5.3)	
Sport 1.5 Ford EcoBlue 120 PS (88 kW)	Diesel	6-speed manual	669	2270	1601	966	635	3.68	3590	1500 (750)	125	53.3 (5.3)	62.8 (4.5)	58.9 (4.8)	
230 L2 Transit Connect Double Cab-in-van (Crew van)															
Leader 1.5 Ford EcoBlue 100 PS (74 kW)	Diesel	8-speed automatic	714	2385	1671	1000	670	3.80	3500	1350 (750)	139	47.9 (5.9)	57.6 (4.9)	53.3 (5.3)	
Leader 1.5 Ford EcoBlue 100 PS (74 kW)	Diesel	6-speed manual	738	2400	1662	976	686	3.68	3500	1350 (750)	123	55.4 (5.1)	62.8 (4.5)	60.1 (4.7)	

Specifications 42-43

Weights and loads

														Fuel consumption in mpg (L/100 km) ⁰⁰⁰		
	Fuel	Transmission	Gross payload (kg) ⁰	Gross vehicle mass (kg)	Kerb mass – excluding driver (kg) [•]	Front axle kerb mass (kg)	Rear axle kerb mass (kg)	Axle ratio ⁰⁰	Max. GTM (kg) with quoted axle ratio	Trailer plate (kg) Braked (unbraked)	CO ₂ emissions	Urban	Extra Urban	Combined		
Trend 1.5 Ford EcoBlue 100 PS (88 kW)	Diesel	6-speed manual	739	2405	1666	979	687	3.68	3500	1495 (750)	123	55.4(5.1)	62.8(4.5)	60.1(4.7)		
Trend 1.5 Ford EcoBlue 120 PS (88 kW)	Diesel	6-speed manual	741	2405	1664	981	683	3.68	3590	1500 (750)	123	56.5(5.0)	62.8(4.5)	60.1(4.7)		
Trend 1.5 Ford EcoBlue 120 PS (88 kW)	Diesel	8-speed automatic	770	2445	1675	1003	672	3.80	3540	1495 (750)	145	44.8 (6.3)	55.4 (5.1)	51.4 (5.5)		

L1 = Short wheelbase, **L2** = Long wheelbase. **Note:** All diesel engines include Diesel Particulate Filter (cDPF). **Kerb mass** = The weight of the complete vehicle and all equipment including 90% fuel and water, but without the payload, driver or any passengers. **GVM** = Gross vehicle mass, the total permissible all-up weight of a vehicle – i.e. with body, payload, ancillaries, fuel, oil, water, driver and passengers. **GTM** = Gross train mass, the total permissible all-up weight of a vehicle (see GVM) together with its trailer and load. ⁰**Gross Payload** = Gross vehicle mass less kerb mass. All kerb masses quoted in this brochure are for models with minimum equipment. Any additional options specified on the vehicle will reduce the payload accordingly. It must be noted that actual weight will always be subject to manufacturing tolerances which may result in payload variations between this table of figures and actual weight. NB: It is the responsibility of the vehicle operator to ensure their vehicles are legally compliant for road use. ⁰⁰The declared fuel consumptions and CO₂ emissions for Stage 6 Light Duty Truck engines are measured according to the technical requirements and specifications of European Regulation (EC) 715/2007 and latest amendment. Fuel consumption and CO₂ emissions are specified for a vehicle variant and not for a single car. The applied standard test procedure enables a comparison between different vehicle types; the specification and options selected may have an effect i.e. on vehicle weight and therefore on the emissions and fuel economy of the vehicle and also may influence the figures that appear in the individual vehicle documentation. This information is not part of any product offer made. Real world fuel consumption can vary as the fuel efficiency of a vehicle is influenced by (individual) vehicle configurations, driving behaviour, use of technical equipment such as air conditioning, as well as other non-technical factors.

Engine data

	Transmission	Engine technical features	Maximum power ⁰	Maximum torque ⁰
1.0 100 PS Ford EcoBoost (74 kW) Petrol Emissions standard Euro 6d TEMP-EVAP-ISC	6-speed manual	3 cylinders in line, DOHC, 12 valves, alloy cylinder head, direct injection with high pressure, common rail fuel injection system, turbocharger with intercooler	100 PS (74 kW)	170 Nm (1400-4000)
1.5 75 PS Ford EcoBlue (55 kW) Diesel Emissions standard Euro 6d TEMP-EVAP-ISC	6-speed manual	4 cylinders in line, DOHC, 16 valves, aluminium cylinder block with open deck, direct injection via solenoid injectors, common rail 3rd generation fuel injection system, fixed geometry turbocharger with intercooler, variable displacement oil pump, thermal override, 'split' sump, electronic actuator and controllable water cooled charge air cooler	75 PS (55 kW)	220 Nm (1750-2000)
1.5 100 PS Ford EcoBlue (74 kW) Diesel Emissions standard Euro 6d TEMP-EVAP-ISC	6-speed manual	4 cylinders in line, DOHC, 16 valves, aluminium cylinder block with open deck, direct injection via solenoid injectors, common rail 3rd generation fuel injection system, fixed geometry turbocharger with intercooler, variable displacement oil pump, thermal override, 'split' sump, electronic actuator and controllable water cooled charge air cooler	100 PS (74 kW)	240 Nm (2000-2500)
1.5 100 PS Ford EcoBlue (74 kW) Diesel Emissions standard Euro 6d TEMP-EVAP-ISC	8-speed automatic	4 cylinders in line, DOHC, 16 valves, aluminium cylinder block with open deck, direct injection via solenoid injectors, common rail 3rd generation fuel injection system, fixed geometry turbocharger with intercooler, variable displacement oil pump, thermal override, 'split' sump, electronic actuator and controllable water cooled charge air cooler	100 PS (74 kW)	240 Nm (2000-2500)
1.5 120 PS Ford EcoBlue (88 kW) Diesel Emissions standard Euro 6d TEMP-EVAP-ISC	6-speed manual	4 cylinders in line, DOHC, 16 valves, aluminium cylinder block with open deck, direct injection via solenoid injectors, common rail 3rd generation fuel injection system, fixed geometry turbocharger with intercooler, variable displacement oil pump, thermal override, 'split' sump, electronic actuator and controllable water cooled charge air cooler	120 PS (88 kW)	270 Nm (1750-2000)
1.5 120 PS Ford EcoBlue (88 kW) Diesel Emissions standard Euro 6d TEMP-EVAP-ISC	8-speed automatic	4 cylinders in line, DOHC, 16 valves, aluminium cylinder block with open deck, direct injection via solenoid injectors, common rail 3rd generation fuel injection system, fixed geometry turbocharger with intercooler, variable displacement oil pump, thermal override, 'split' sump, electronic actuator and controllable water cooled charge air cooler	120 PS (88 kW)	270 Nm (1750-2000)

⁰Tested in accordance with ISO 1585. **Note** all diesel engines are fitted with a standard cDPF (coated diesel particulate filter).

Model availabilty

Model availability		Transmission	L1					L2						
			Leader	Leader High Payload	Trend	Trend High Payload	Limited	Sport	Leader	Leader High Payload	Trend	Trend High Payload	Limited	Sport
Ford Transit Connect Van														
1.0 Ford EcoBoost 100 PS (74 kW)	6-speed manual	●	–	●	–	–	–	●	–	●	–	–	–	
1.5 TDCi EcoBlue 75 PS (55 kW)	6-speed manual	●	●	●	–	–	–	●	–	–	–	–	–	
1.5 TDCi EcoBlue 100 PS (74 kW)	6-speed manual	●	●	●	●	–	–	●	●	●	●	–	–	
1.5 TDCi EcoBlue 100 PS (74 kW)	8-speed automatic	–	●	–	–	–	–	–	–	–	–	–	–	
1.5 TDCi EcoBlue 120 PS (88 kW)	6-speed manual	–	–	●	●	●	●	●	●	–	●	●	●	
1.5 TDCi EcoBlue 120 PS (88 kW)	8-speed automatic	–	–	–	●	●	–	–	●	–	●	●	–	
Ford Transit Connect Double Cab in Van (DCiV)														
1.0 Ford EcoBoost 100 PS (74 kW)	6-speed manual	●	–	●	–	–	–	–	–	–	–	–	–	
1.5 TDCi EcoBlue 100 PS (74 kW)	6-speed manual	●	–	●	–	–	–	●	–	●	–	–	–	
1.5 TDCi EcoBlue 100 PS (74 kW)	8-speed automatic	●	–	–	–	–	–	●	–	–	–	–	–	
1.5 TDCi EcoBlue 120 PS (88 kW)	6-speed manual	–	–	–	–	–	–	–	–	●	–	–	–	
1.5 TDCi EcoBlue 120 PS (88 kW)	8-speed automatic	–	–	●	–	–	–	–	–	●	–	–	–	

● = Available **Note:** All diesel engines are fitted with a standard cDPF (catalysed diesel particulate filter). **L1** = Short wheelbase, **L2** = Long wheelbase.

Specifications 44-45

Styling and appearance

	Van				DCIV	
	Leader	Trend	Limited	Sport	Leader	Trend
Wheels						
Steel wheels – 16"x 6½" painted Shadow Silver wheel covers (fitted with 205/60 tyres) (only available with manual transmission)	●	–	–	–	● /–	–
Steel wheel – 16"x 6½" painted Sparkle Silver wheel covers (fitted with 205/60 tyres) (only available with manual transmission on DCIV)	–	●	–	–	–	● /–
Alloy Wheel – 16"x6½" painted Sparkle Silver (fitted with 205/60 tyres) (Standard on L2 Leader DCIV with Automatic transmission and DCIV Trend with automatic transmission (L1 and L2), part of pack with tow bar on L1 DCIV Leader series Auto). Includes locking wheel nut	–	○	●	–	□ / ●	– / ●
Alloy Wheel – 16"x6½" painted Dark Stainless (fitted with 205/60 tyres). Includes locking wheel nut	–	–	–	●	–	–
Steel spare wheel	●	●	●	○	–	–
Steel spare wheel with 16" Alloy Wheels	–	–	–	–	○	–
Delete spare wheel	○	○	○	●	●	●
Tyre repair kit (comes when delete spare wheel is either standard or selected as an option)	○	○	○	●	●	●
All Weather tyres (not available on DCIV L2 Leader or L1/L2 Trend with automatic transmission)	○	○	○	–	○ /–	○ /–
Tyre Pressure Monitoring System (TPMS)	○	○	○	○	○	○
Design features						
Sports Styling Pack – Contains front and rear sports stripes, roof rails, front and rear lower spoiler and chromed rear bumper moulding	–	–	–	●	–	–
Front bumper – Self colour (on Trend series only in conjunction with SVO paint)	●	–	–	–	●	–
Front bumper – Body colour	–	●	●	●	–	●
Rear bumper – Self colour	●	●	●	–	●	●
Rear bumper moulding – Chrome	–	–	–	●	–	–
Rear bumper end caps – Self colour	●	–	–	–	●	–
Rear bumper end caps – Body colour	–	●	●	●	–	●
Exterior door handles – Self colour	●	●	–	–	●	●
Exterior door handles – Body colour	–	–	●	●	–	–
Cargo door/liftgate handle – Self colour	●	●	–	–	●	●
Cargo door/liftgate handle – Body colour	–	–	●	●	–	–
Front grille – Self colour	●	●	●	●	●	●
Wide bodyside moulding – Self colour	●	●	–	–	●	●
Wide bodyside moulding – Body colour	–	–	●	●	–	–
Front lip spoiler (not available with petrol engines)	●	●	●	●	●	●
Mudflaps – Front with Rear Wheel Arch Air Deflectors	○	○	○	●	○	○
Roof rails (L1 only on DCIV)	○	○	○	●	○	○
Roof rails and cross bars (L1 only on DCIV)	–	–	–	–	○	○
Interior door handle – Black	●	●	–	–	●	●
Interior door handle – Chrome finish	–	–	●	●	–	–

● = Standard, ○ = Option, at extra cost, □ = Part of an option pack, at extra cost.



Driving experience

	Van				DCiV	
	Leader	Trend	Limited	Sport	Leader	Trend
Driver Assistance						
Parking distance sensors – Rear	○ / □	○ / □	●	●	○ / □	○ / □
Parking distance sensors – Front	○ / □	○ / □	○ / □	○ / □	□	○ / □
Rear-view camera in mirror display	○	○	○	○	○	○
Rear-view camera in audio screen display (included with SYNC 3 ICE packs)	□	□	□	□	□	□
Active Park Assist (includes front and rear parking sensors). Must be ordered with ICE pack 9,10 or 154 on Leader series	○	○	○	○	○	○
Ford Power starter button	–	–	●	●	–	–
Electric power-assisted steering (EPAS)	●	●	●	●	●	●
Hill Start Assist	●	●	●	●	●	●
Lane-Keeping Aid (includes Driver Impairment Monitor, Cross Traffic Alert, Auto High Beam, Traffic Sign Recognition, Rain-sensing wipers and Quickclear heated windscreen)	○ / □	○ / □	○ / □	○ / □	○ / □	○ / □
Pre-Collision Assist with Active Braking and Pedestrian Detection	○	○	○	○	○	○
Pre-collision Assist with Active Braking and Pedestrian Detection. Includes Lane-Keeping Aid	○ / □	○ / □	○ / □	○ / □	○ / □	○ / □
Blind Spot Information System (BLIS) includes Cross Traffic Alert	○	○	○	○	–	–
Cruise control with Adjustable Speed Limiter	○ / □	○ / □	●	●	○ / □	○ / □
Adaptive Cruise Control with Intelligent Speed Assist, Traffic Sign Recognition and Pre-Collision Assist with pedestrian and cyclist recognition and Active Braking. Adds Leather Steering wheel where not present	○	○	○	○	○	○
Intelligent Speed Assist with Cruise Control and Traffic Sign Recognition	○	○	○	○	○	○
Traffic Speed Sign Recognition	□	□	□	□	□	□
Trailer Sway Control	□	□	□	□	□	□
Speed Limiter – 56 mph/90 km/h	○	○	○	○	○	○
Speed Limiter – 62 mph/100 km/h	○	○	○	○	○	○
Speed Limiter – 70mph/130 km/h	○	○	○	–	○	○
Exterior Lighting						
Fog lights – Front	–	●	–	–	–	●
Fog lights – Static cornering lights	○	○	●	●	–	○
Fog lights – Rear	●	●	●	●	●	●
Headlights – Halogen, side lights, rear fog light, reversing light	●	●	●	●	●	●
Headlights – Automatic on/off (with rain sensitive wipers)	–	○	●	●	–	○
Headlights – Courtesy delay	–	□	●	●	–	□
Headlights – Daytime running lights	●	●	●	●	●	●
Headlights – Bi-xenon HID (high intensity discharge) with LED daytime running lights	–	○	○	○	–	○
Suspension						
Twistbeam	●	●	●	●	●	●

● = Standard, ○ = Option, at extra cost, □ = Part of an option pack, at extra cost. **L1** = Short wheelbase, **L2** = Long wheelbase.

Specifications 46-47

Performance and efficiency

	Van				DCiV	
	Leader	Trend	Limited	Sport	Leader	Trend
Engine						
Ford Easy Fuel System	●	●	●	●	●	●
Fuel tank – 60 litres	●	●	●	●	●	●
AdBlue® tank – 17 litres (standard with diesel engines)	●	●	●	●	●	●
6-speed manual	●	●	●	●	●	●
8-speed automatic	○	○	○	–	○	○
Technology						
Heavy duty battery	●	●	●	●	●	●
Active Grille Shutter	●	●	●	●	●	●
Auto Start-Stop	●	●	●	●	●	●
Acceleration control (manual transmission Diesel only)	○	○	○	○	–	–
Side wind stabilisation. Includes Curve control and Roll Stability Control	○	○	○	○	○	○
Manual Regeneration Initiation. Diesel only	○	○	○	○	○	○
Programmable Interface Module.Diesel only. Provides read only access to CAN bus data	○	○	○	○	○	○

● = Standard, ○ = Option, at extra cost, □ = Part of an option pack, at extra cost. **L1** = Short wheelbase, **L2** = Long wheelbase.

8-speed automatic transmission
(Option, diesel models only)



Comfort and convenience

	Van				DCiV	
	Leader	Trend	Limited	Sport	Leader	Trend
Interior Convenience						
Instrument panel storage box	●	●	●	●	●	●
Dual front cup holders	●	●	●	●	●	●
Glovebox lid	□	●	●	●	●	●
Single passenger seat centre console	●	●	●	●	●	●
Dual passenger under seat console	□	□	□	–	–	–
Smokers pack	○	○	○	○	○	○
Rear coat hook	–	–	–	–	●	●
Sunvisor, driver's and passenger's (driver's side includes mirror, flap and ticket pocket on all series except for Leader)	●	●	●	●	●	●

● = Standard, ○ = Option, at extra cost, □ = Part of an option pack, at extra cost.

Comfort and convenience

	Van				DCiV	
	Leader	Trend	Limited	Sport	Leader	Trend
Audio and Communication Systems						
Delete ICE pack. Pre-equipment pack (two speakers). ICE pack 30	○	–	–	–	○	–
DAB Radio, steering wheel radio controls, four speakers, AUX, MP3 capability and Bluetooth® ICE pack 2	●	–	–	–	●	–
DAB Radio with 4.2" TFT screen display, steering wheel radio controls, four front speakers, featuring Bluetooth®, USB, Voice Control and emergency assistance. ICE pack 154	○	●	●	●	○	●
DAB Radio with 6" TFT Touchscreen display, diversity antenna, four front speakers, MP3 capability and Ford SYNC 3, Voice Control, Apple CarPlay, Android Auto, Emergency Assistance**, hands-free calling, GPS, Bluetooth® and audible text messaging, 2x USB. Includes rear parking sensor and fixed rear view camera. ICE pack 10	○	○	○	○	○	○
DAB Radio with 6" TFT Touchscreen display and Satellite Navigation, four front speakers, MP3 capability and Ford SYNC 3 with Navigation Centre, Voice Control, Touchscreen, Apple CarPlay, Android Auto, Emergency Assistance**, hands-free calling, GPS, Bluetooth® and audible text messaging, 2x USB. Includes rear parking sensors and fixed rear view camera. ICE pack 9	○	○	○	○	○	○
Single slot CD player. Not available with Wireless charging. Must be ordered with ICE packs 9, 10 or 154 on Leader series at extra cost	○	○	○	○	○	○
MyFord Dock (Device dock). Only in conjunction with ICE packs 2 or 30	○	–	–	–	○	–
Wireless charging pad. Not available with CD player. Compatible with devices that support Qi wireless charging	○	○	○	○	○	○
FordPass Connect (embeddem modem). Must be ordered with ICE pack 9, 10 or 154 on Leader series. Not available with Device dock	○	○	○	○	○	○
Roof mounted microphone (included in all ICE packs)	●	●	●	●	●	●
Steering wheel radio controls	●	●	●	●	●	●
Climate Control						
Manual air conditioning – Manual with smart recirculation function	○ / □	○ / □	●	–	○	○
Air conditioning – Dual-zone Electronic Automatic Temperature Control (DEATC) with electronic recirculation facility	–	○	○	●	–	–
Interior Lighting						
Courtesy lights – Front dome	●	–	–	–	●	–
Courtesy lights – Front dome light with two map lights	–	●	●	●	–	●
Lights – Glovebox	–	–	●	●	–	–
Seating						
Seat adjuster – Driver 4-way manual (fore/aft + recline)	●	–	–	–	●	–
Seat adjuster – Driver 8-way manual (fore/aft, up/down + recline) includes lumbar	○	●	●	●	○	●
Seat adjuster – Passenger 2-way manual (fore/aft + recline)	●	●	●	●	●	●
Individual passenger seat	●	●	●	●	●	●
Dual passenger seat. Must be ordered together with a bulkhead with a load through hatch	○	○	○	–	–	–
Passenger seat – Flip/Fold/Tumble fold flat passenger seat functionality	○	○	○	–	–	–
Second row 3-across seating, folding	–	–	–	–	●	●
Heated drivers seat (on Trend series this is only available in conjunction with a Dual passenger seat through optional Seat Packs 20 & 30)	–	○	●	●	–	–
Heated passenger seat. Only with single passenger seat. If dual seat option is taken on Limited the passenger seat is not heated	–	–	●	●	–	–

Specifications 48-49

Comfort and convenience

	Van				DCiV	
	Leader	Trend	Limited	Sport	Leader	Trend
Instruments and Controls						
Door mirrors – Manual door mirror, self colour	●	–	–	–	●	–
Door mirrors – Electrically-operated and heated, self colour	○ / □	●	–	–	○ / □	●
Body colour door mirrors – Electrically-operated, autofold on lock and heated	–	–	●	●	–	–
Self colour door mirrors – Electrically-operated, autofold on lock and heated	–	○	–	–	–	○
Electrically-operated, power fold heated door mirrors, with Blind Spot Information System. Self colour housing on Leader and Trend; body colour housing on Limited and Sport. Includes Cross Traffic Alert	○	○	○	○	–	–
Large Door Mirrors with small secondary blind spot eliminator mirror	○	○	○	○	○	○
Rear-view mirror – Screen mounted interior (in combination with rear windows and glazed bulkhead on Van)	●	●	–	–	●	●
Rear-view mirror – Auto-dimming (included with optional Auto Headlamps)	–	□	●	●	–	□
2-speed variable intermittent front wipers	●	●	–	–	●	●
Rain-sensing wipers (requires automatic headlight activation)	–	□	●	●	–	□
Rear window washer/wiper (can only be ordered with glazed rear windows)	○	○	–	–	○	○
Rear window – Heated (standard when glazed rear window is specified)	○	○	–	–	○	○
Gearshift knob – Urethane	●	●	–	–	●	●
Gearshift knob – Leather	–	–	●	●	–	–
Steering wheel – 4-spoke PU with black shells	●	●	–	–	●	●
Steering wheel – 4-spoke leather (included with optional Cruise Control on Leader and Trend)	□	□	●	●	□	□
Driver's window – Electrically-operated with one-touch lowering	●	●	–	–	●	●
Front windows – Electrically-operated with one touch up and down (included with optional Electrically-operated, autofold on lock and heated)	–	□	●	●	–	□
Trip/fuel computer	●	●	●	●	●	●
Technology						
Quickclear heated windscreen	○	●	●	●	○	●
MyKey	○	○	○	○	○	○
Option Packs						
Comfort Pack (manual air conditioning, cruise control with adjustable speed limiter) (Available on regular payload 200 and 210 GVM series only)	○	○	–	–	–	–

● = Standard, ○ = Option, at extra cost, □ = Part of an option pack, at extra cost.
The Bluetooth® word mark and logos are owned by the Bluetooth SIG, Inc. and any use of such marks by Ford Motor Company is under licence. Other trademarks and trade names are those of their respective owners. **Ford Emergency Assistance is an innovative SYNC feature that uses a Bluetooth®-paired and connected mobile phone to help vehicle occupants initiate a direct call to the local Communications Centre, following a vehicle crash event involving an airbag deployment or fuel pump shut off. The feature operates in more than 40 European countries and regions.



Safety and security

	Van				DCiV	
	Leader	Trend	Limited	Sport	Leader	Trend
Safety						
Brake light – Rear high-mounted	●	●	●	●	●	●
Seat belts – Front, 3 point, with seat pre-tensioner, height adjust and load limiters	●	●	●	●	●	●
Orange seatbelts (SVO option). Available with single passenger packs only	○	○	○	○	–	–
Driver beltreminder	●	●	●	●	●	●
ISOFIX – 2nd row seats in the 2 outboard seating positions	–	–	–	–	●	●
Anti-lock braking system (ABS) with electronic brake-force distribution (EBD) and Electronic Stability Control (ESC)	●	●	●	●	●	●
Airbag – Driver's	●	●	●	●	●	●
Airbag – Front passenger's* with de-activation switch	○/□	○/□	○/□	○/□	○/□	○/□
Airbags – Driver's and passenger's side airbag (side and thorax)	□	□	□	□	□	□
Emergency Brake Assist (EBA)	●	●	●	●	●	●
Security						
Configurable locking 1. 2 stage unlocking: Stage 1 Front doors, Stage 2 remaining doors	●	●	●	●	○	○
Configurable locking 2. 2 stage unlocking: Stage 1 Front and side doors, Stage 2 remaining doors	–	–	–	–	●	●
Locking – Auto relocking. Doors relock after 45 seconds if no door is opened	●	●	●	●	●	●
Power door dead locks	●	●	●	●	●	●
Remote key and plain key	●	●	–	–	●	●
Two remote keys (no plain key included as part of this pack; n/a with fleet key option)	○/□	○/□	●	●	○/□	○/□
Fleet key (consists of an additional plain key; n/a with two remote key option)	○	–	–	–	○	–
Perimeter anti-theft alarm	○	○	–	–	○	○
Thatcham Category 1 Alarm	○	○	●	●	○	○
Security – Passive Anti-Theft System (PATS)	●	●	●	●	●	●
Brakes						
Power 4-wheel disc	●	●	●	●	●	●
Emergency Brake Warning (automatic flashing of brake lights under heavy braking)	●	●	●	●	●	●
Side Wind Stabilisation. Includes Curve control and Roll stability control	○	○	○	○	○	○

● = Standard, ○ = Option, at extra cost, □ = Part of an option pack, at extra cost. **L1** = Short wheelbase, **L2** = Long wheelbase.
***Note: A rear-facing child seat should never be placed in the front passenger seat when the Ford vehicle is equipped with an operational front passenger's airbag.**

Utility

	Van				DCiV	
	Leader	Trend	Limited	Sport	Leader	Trend
Carpet and Trim						
All weather floor mats	○	○	○	○	○	○
Rubber floor cover	●	●	●	●	●	●
Interior grab handles – Front	●	●	●	●	●	●

Specifications 50-51

Utility

	Van				DCiV	
	Leader	Trend	Limited	Sport	Leader	Trend
Body						
Kerbside load door	●	●	●	●	–	–
Dual side loading doors	○	○	○	○	●	●
Unglazed rear cargo doors (hinged)	●	●	●	●	●	●
Heated Glazed tailgate	○	○	–	–	–	–
Second row fixed side window (dual side)	–	–	–	–	○	○
Privacy glass	–	–	–	–	○	○
Electrical						
12 V power point (one in the instrument panel)	●	●	●	●	●	●
12 V power point in the load compartment	–	○	○	○	–	○
230 V power inverter	○	○	○	○	–	–
Heavy duty battery	●	●	●	●	●	●
Standard duty alternator	●	●	●	●	●	●
Exterior Functional						
Towing hooks – Front and rear	●	●	●	●	●	●
Tow bar preparation kit – Allows quick installation of a tow bar. Includes Trailer Sway Control and pre-assembled trailer light module (13-pin e-Kit is required)	○	○	○	○	○	○
Tow Bar (Fixed) (Compatible with Trailer Sway Control)	○	○	○	○	○	○
Tow Bar (Fixed) (Compatible with Trailer Sway Control) with 16" 5-Spoke Alloy Sparkle Silver – L1 Auto only	–	–	–	–	○	–
Tow Bar (Detachable) (Compatible with Trailer Sway Control)	○	○	○	○	○	○
Tow Bar (Detachable) (Compatible with Trailer Sway Control) with 16" 5-Spoke Alloy Sparkle Silver – Auto only	–	–	–	–	○	–
Loadspace Compartment						
Load floor liner (easy clean floor)	○	●	●	●	–	–
Cargo tie down hooks	●	●	●	●	●	●
Load compartment light	●	●	●	●	–	–
LED loadspace lighting	○	○	●	●	–	–
Bulkhead – moveable full width, full height mesh	–	–	–	–	●	●
Bulkhead – Full width, full height steel (standard with single passenger seat)	●	●	●	●	–	–
Bulkhead – Full width, full height steel with fixed window (optional with single passenger seat only)	○	○	○	○	–	–
Bulkhead – Full width, full height steel with load through hatch (available with dual passenger seat options only)	○	○	○	–	–	–
Bulkhead – Full width, full height steel with load through hatch and fixed window (available with dual passenger seat options only)	○	○	○	–	–	–
Bulkhead Removal Pack (available with single passenger seat options only)	○	–	–	–	–	–

● = Standard, ○ = Option, at extra cost, □ = Part of an option pack, at extra cost. **L1** = Short wheelbase, **L2** = Long wheelbase.



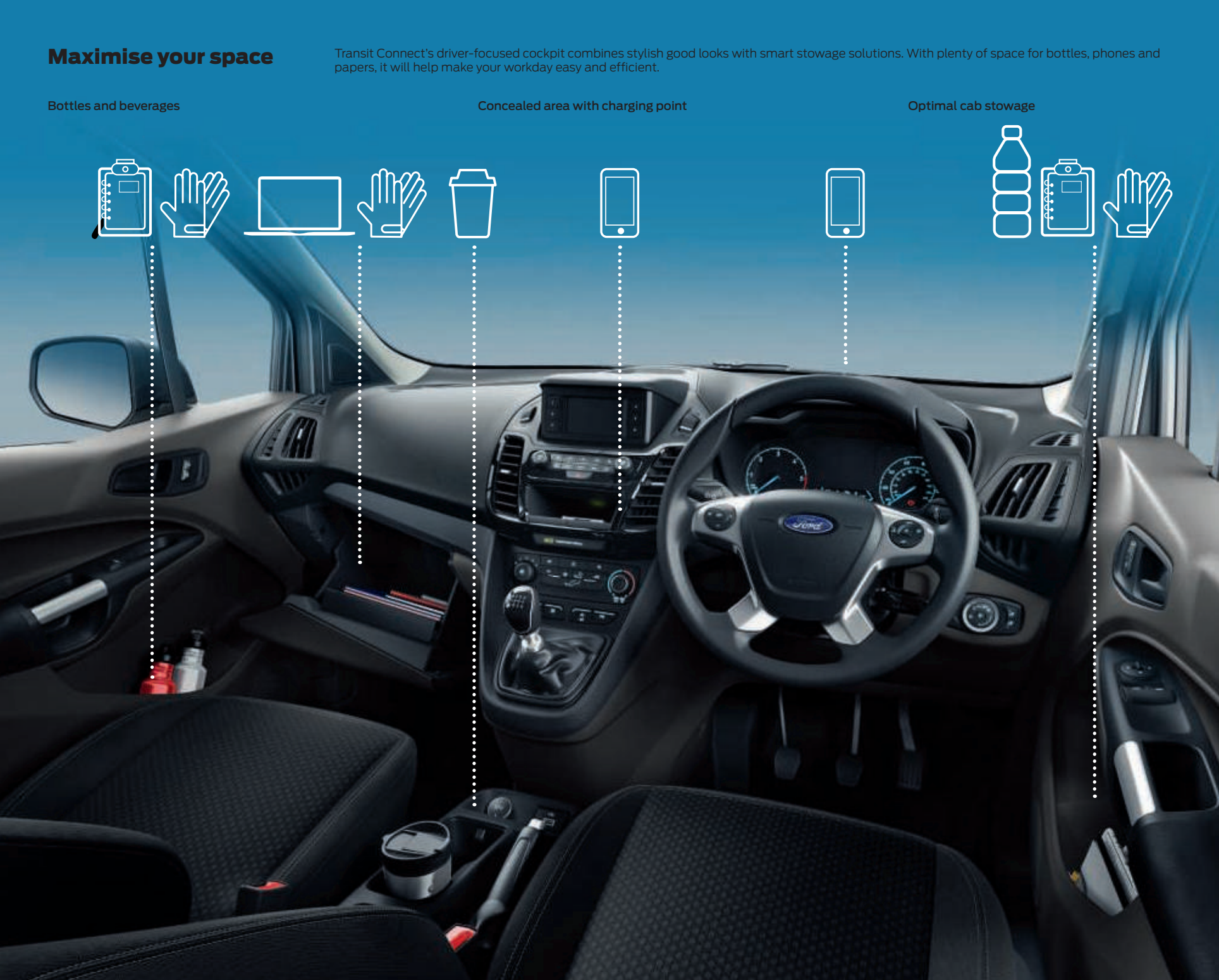
Maximise your space

Transit Connect's driver-focused cockpit combines stylish good looks with smart stowage solutions. With plenty of space for bottles, phones and papers, it will help make your workday easy and efficient.

Bottles and beverages

Concealed area with charging point

Optimal cab stowage



Special Vehicle Options

	Van				DCiV		
	Leader	Trend	Limited	Sport	Leader	Trend	MFC Code
Options Packs							
Sortimo Van Pack – contains single side racking and safety floor (for Van only)	○	○	–	–	–	–	AALA7
Glazed Liftgate Pack – Contains glazed liftgate (for DCiV only)	–	–	–	–	○	○	AALNP
Wheel chair access conversion pack (not available with petrol engines)	○	○	○	○	○	○	AALNR
Paint							
Special Paint, 50 colours available, consult Dealer for details♦ (contains self colour rear bumper end caps and self colour front bumper on Trend series)	○	○	–	–	○	○	AB7AB

○ = Option, at extra cost, □ = Part of an option pack, at extra cost. **L1** = Short wheelbase, **L2** = Long wheelbase.
♦SVO paint suffix must be entered at time of ordering.

Next steps



test drive

Visit your Ford Transit Centre and test drive the Ford Transit Connect for yourself. Find your local Ford Transit Centre at www.ford.co.uk



build

Build and price your new Ford Transit Connect to your exact specification and see how it looks at www.ford.co.uk



FordPass

is a new platform offering a collection of personal, digital and physical solutions that will empower you to rethink the way you move. This smartphone App provides access to Ford services, and a range of connected vehicle features. Receive up-to-the-minute traffic data, search for refuelling points and compare pricing, search available parking spaces, check their costs, opening hours and select points of interest around your current location or en route to your planned destination. FordPass automatically sends these locations to your SYNC 3 Navigation when you connect through Applink.



own

When you drive away in your new vehicle, we're with you all the way. Ford has a large authorised service network to help you keep your vehicle in the best condition. And should your new Ford ever require accident repair, a Ford Accident Repair Centre is the best place to get your vehicle back to its pre-accident condition and on the road as quickly as possible.



finance

When it comes to financing your vehicle, our size and expertise means we're well placed to provide you with a wide range of finance products. Ford Credit* provides a range of finance products for your vehicle whether you are a private or business user. Ford Lease^ specialises in contract hire and leasing and provides an alternative range of finance plans which can be tailored to suit your business. *Finance subject to status. Freepost Ford Credit. Ford Credit is a trading style of FCE Bank plc. which is authorised by the Prudential Regulation Authority and regulated by the Financial Conduct Authority and the Prudential Regulation Authority under firm reference number 204469. ^ Ford Lease is provided by ALD Automotive Limited acting as Ford Lease BS16 7LB. ALD is registered in England No. 987418. ALD is authorised and regulated by the Financial Conduct Authority. For more information about our finance products visit ford.co.uk



contact

Ford Credit Customer Services 0345 712 5490
Ford Lease Customer Services 0344 600 1405
Calls to 0344 and 0345 numbers are charged at the same rate as a standard 01 or 02 geographic number, even when calling from a mobile.

Illustrations, descriptions and specifications. This catalogue was correct at the time of going to print. However, Ford policy is one of continuous product development. The right is reserved to change specifications, colours and recommended prices of the models and items illustrated and described in this publication at any time. For the latest details always consult your Ford Dealer. **Optional equipment.** Throughout this publication, wherever a feature is described as being an 'Option' or 'Option Fitment/Pack' etc, you should assume that it will be at extra cost to the base vehicle, unless specifically stated to the contrary. All models and colour combinations are subject to availability. **Note.** Some images portrayed are of a pre-production model and/or are computer generated, therefore, the design/features on the final version of the vehicle may differ in various respects. In addition, some of the features shown on the vehicles may be optional. **Note.** This brochure contains both original Ford accessories as well as a range of products from our suppliers. Fitment of accessories may have an impact on your vehicle's fuel consumption. **+** The identified accessories are carefully selected third party supplier branded accessories which do not come with a Ford warranty but are covered by the third party supplier's own warranty, the details of which can be obtained from your Ford Dealer. **Note.** The Bluetooth® word mark and logos are owned by the Bluetooth SIG, Inc. and any use of such marks by Ford Motor Company is under licence. The iPod word mark and logos are the property of Apple Inc. Other trademarks and trade names are those of their respective owners. **Note.** Some driver assistance features and safety features described in this brochure are designed to function using sensors, whose performance may be affected under certain weather or environmental conditions.

The Government fuel figures do not express or imply any guarantee of the fuel consumption of any particular vehicle. The vehicles themselves have not been tested and there are inevitably differences between individual vehicles of the same model. In addition, a vehicle may incorporate particular modifications. Furthermore, the driver's style and road and traffic conditions, as well as the extent to which the vehicle has been driven and the standard of maintenance, will affect its fuel consumption. **Insurance groups** are only as recommended by the Association of British Insurers. You should always consult your insurance adviser for confirmation.



Ford and BP – working together to reduce fuel consumption and emissions.

Ford One Call

In the unlikely event that your Ford Dealer can't help you or if you need to speak to us directly, call 0203 564 4444

Ford Rental - local service nationwide

Car and Van rental from our latest model range.
Contact your local Ford Dealer for more information

Ford Motability

Call our Ford Motability team on 0345 6040019

Finance

Ford Credit Customer Services 0345 712 5490
Ford Lease Customer Services 0344 600 1405
Calls to 0344 and 0345 numbers are charged at the same rate as a standard 01 or 02 geographic number, even when calling from a mobile.

Published by Ford Motor Company Limited,
Brentwood, Essex, England.
Registered in England No. 235446.

FA 1590/8

BJN 207525. FoE H60E.
PN 977509/0320/GBR en

October 2019

© Ford Motor Company Limited.





PURE VANS

Telephone - 01633-212944

Email - sales@purevans.com

www.purevans.com