



PURE VANS

Telephone - 01633-212944

Email - sales@purevans.com

www.purevans.com



Innovation
that excites

NISSAN NV250



[Exterior Design](#) | [Interior Design](#) | [Versatility](#) | [Performance](#) | [Accessoires](#)

[Print](#) | [Close](#)



BACK YOUR BUSINESS WITH THE NEW NISSAN NV250

Cruise into the future with the New Nissan NV250, a comfortable, cost-effective city van available in 2 lengths with a full 5-year warranty for long-term, worry-free driving around town. Whichever way you look at it, the New Nissan NV250 makes good sense.



* 5 Year/100,000 miles (whichever comes first) Manufacturer Warranty for the LCV range (with the exception of e-NV200: 8 Year/100,000 miles Lithium-Ion battery state of health guarantee, 5 Year/60,000 miles Manufacturer Warranty for the EV system parts and 3 Year/60,000 miles for the rest of the vehicle)

[Exterior Design](#) | [Interior Design](#) | [Versatility](#) | [Performance](#) | [Accessories](#)

[Page 1](#) | [Page 2](#)

[Print](#) | [Close](#)



ADAPT YOUR VAN

TO SUIT YOUR BUSINESS

Choose from 2 body lengths (L1 and L2), 2 body types (Van or Crew Van*) and a range of versatile options to suit your line of work – and then add NissanConnect for a smooth, seamless day on the job from start to finish.

*Crew Van available from 2020 H1



OVERALL LENGTH:
4,282MM

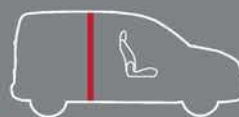
UP TO
650KG PAYLOAD | **3.5M³** CARGO VOLUME



OVERALL LENGTH:
4,666MM

UP TO
800KG PAYLOAD | **4.6M³** CARGO VOLUME

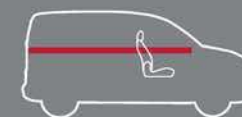
SIZE UP YOUR NEEDS



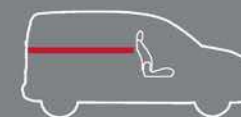
1,251MM
CARGO HEIGHT



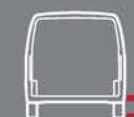
1,218MM
BETWEEN WHEELARCHES



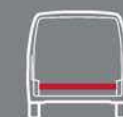
L1: 2,502MM / L2: 2,886MM
LOAD LENGTH
(WITH PASSENGER SEAT
FULLY FOLDED)



L1: 1,476MM / L2: 1,862MM
CARGO LENGTH
(WITH FULL BULKHEAD)



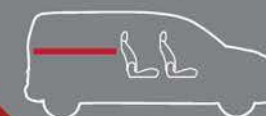
558 MM
CARGO FLOOR
HEIGHT



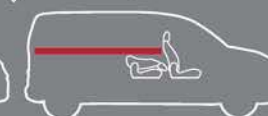
1,218MM
BETWEEN
WHEELARCHES



L2 CREW VAN



1,361MM
CARGO LENGTH



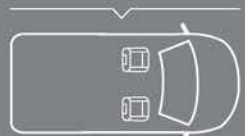
2,115MM
CARGO LENGTH
WHEN SECOND ROW FOLDED

KEY PERFORMANCE INDICATOR

CHOOSE YOUR SEATING PLAN

L1

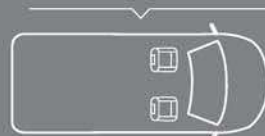
VAN



2 seats

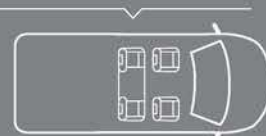
L2

VAN



2 seats

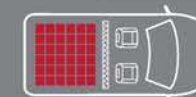
CREW VAN



Up to 4 seats
2 FRONT SEATS
+ 2 REAR SEATS

VERSATILITY IN VOLUMES

L1 & L2 VAN



L1: 3 M³ / L2: 4 M³
CARGO VOLUME



L1: 3.5 M³ / L2: 4.6 M³
CARGO VOLUME WHEN
PASSENGER SEAT FOLDED

NissanConnect

Trip Summary, eco-scoring,
eco-navigation, Android Auto,
Multiple-phone connection,
Voice Recognition



*5 Year/100,000 miles (whatever comes first)
Manufacturer Warranty for the LCV range (with
the exception of e-NV200: 8 Year/100,000 miles
Lithium-Ion battery state of health guarantee,
5 Year/60,000 miles Manufacturer Warranty for
the EV system parts and 3 Year/60,000 miles for
the rest of the vehicle)



YOUR WORK SPACE ON WHEELS

Whether work takes you across the country or around town, the Nissan NV250 has generous cargo space to store your tools and equipment. With a comfortable cabin, Nissan technologies and safety features, it makes light work of a tough job.

With 77l of storage space, including a 10l tray under the drivers' seat or an extra-large pocket in the passenger door, your PC, files and tools are all on hand for maximum efficiency.



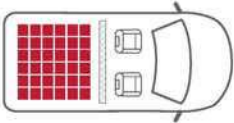


A MULTIPURPOSE SPACE FOR A MULTI-FACETED JOB

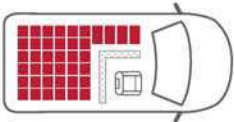
With the New Nissan NV250, you can take any job on board. Make the most of your flexible cargo space and payload to expand your business in every direction.

GO TO GREATER LENGTHS

Choose swivelling bulkhead (available as an option) to get a 650kg or 800kg payload capacity and 3.5m³ or 4.6m³ of cargo space to load up goods of all shapes and sizes. Simply fold the passenger seat down to create a clear flat floor and pivot the bulkhead against the driver's station to fit items up to 2,998mm long.



L1: 3 M³ / L2: 4 M³
CARGO VOLUME



L1: 3.5 M³ / L2: 4.6 M³
CARGO VOLUME WHEN
PASSENGER SEAT FOLDED



UP TO
800KG
PAYLOAD

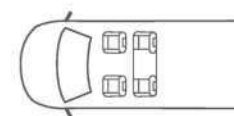
UP TO
4.6M³
CARGO
VOLUME





THE VAST POSSIBILITIES OF THE CREW VAN

Whether you want to transport people or goods, there's a Nissan NV250 for you – and for the best of both worlds, the NV250 Crew Van is ideal. It combines adaptable space with outstanding carrying capabilities and comfortably seats up to four people with two in the front and two in the rear.



UP TO
4 SEATS

2 FRONT SEATS
+ 2 REAR SEATS



1.4 M
CARGO LENGTH



2.1 M
TRUNK LENGTH WHEN
SECOND ROW FOLDED

FOLD AND LOAD

Switch from being a people carrier to a load carrier in one simple move. The rear seats fold down to create extra space for cargo.

Crew Van available from CY2020 H1





ENGINES

1.5 Diesel 80HP, 95HP, 115HP Body Length

ENGINE	HP	kW	Nm	L1	L2
K9K Gen8	80	59	210	□	
K9K Gen8	95	70	230	□	□
K9K Gen8	115	85	260	□	□

Combined fuel consumption (NEDC-BT): 58.9 - 62.8 MPG*
Combined CO₂ emissions (NEDCT-BT): 117 - 125 g/km*
*figures depend on the HP and the Body Length of the vehicle.

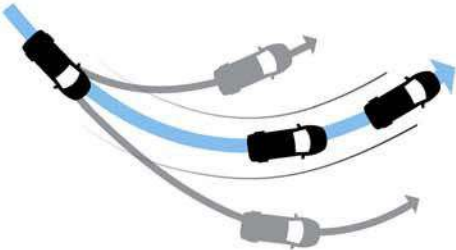
Official fuel consumption figures are produced for comparability purposes; only compare figures with vehicles tested to the same technical procedures. Actual real-world driving results may vary depending on factors such as weather conditions, driving styles, vehicle load or any accessories fitted after registration. WLTP is a new test used for fuel consumption and CO₂ figures, however the CO₂ and fuel consumption figures are based on the outgoing NEDC test cycle which have been back-translated from WLTP to NEDC

A GREAT PERFORMER
ALL ROUND

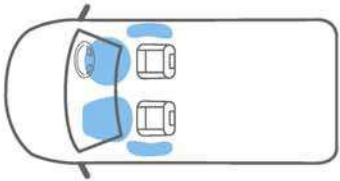
Equipped with a powerful 80Hp, 95HP or 115hp engine that's easy on your wallet as well as the environment, the NV250 is good for business.



HILL START ASSIST To help stop you rolling backwards when you're starting on a slope, Hill Start Assist holds the brake pressure for a few seconds to give you time to switch pedals.



ESP Whatever the road and weather conditions, the Electronic Stability Programme (ESP) with Extended Terrain Grip will help keep you on track.



AIRBAG Safety and security are top priority at Nissan. The Nissan NV250 is equipped with airbags to protect drivers (and passengers, optional airbag at cost) in the case of an incident.



TAKE CARE OF THE DETAILS

Kit your Nissan NV250 to match your business needs. Protect it, extend its possibilities... with Nissan Accessories, all options are covered.



- 1) Transverse roof bars - Steel
- 2) Wood side interior protection
- 3) Front Mudguards
- 4) Rubber Mats
- 5) Fixed Towbar
- 6) Towbar Flange
- 7) Roof rack - Steel
- 8) Rear parking system



COLOURS



WHITE⁽¹⁾ (QNG)



RED⁽¹⁾ (Z52)



GREY⁽¹⁾ (G25)



BLACK⁽²⁾ (B00)



BROWN⁽²⁾ (ZNB)



BLUE⁽²⁾ (B13)



DARK GREY⁽²⁾ (KNG)



SILVER GREY⁽²⁾ (KQA)

(1) Solid paint
(2) Metallic paint

WHEELS



15" Alloy wheels
PANEL VAN & CREW VAN
(Option)
(Order code «ALW15»)



15" Steel wheels with full wheel covers
PANEL VAN & CREW VAN

TRIMS



BLENDED FABRIC
PANEL VAN & CREW VAN
(order code «O»)



PANEL VAN & CREW VAN
(Special orders only)
(order code «S»)

CONVERSION NV250 LINEUP



GET THE CONVERSION YOU NEED

Turn your New Nissan NV250 into the precise vehicle you need. Make it a fridge, build in wood side protection in the finish of your choice or opt for a Crew Van. Visit your nearest Nissan dealer for more details.

NISSAN BRANDED CONVERSION

A ready-to-go offer covered with Nissan 5-year warranty for peace of mind. Design and quality are completely approved by Nissan, allowing quick ordering and short delivery time.

NISSAN CERTIFIED CONVERSION

A tailor made offer catering to your specific business needs. Based on a quality level certified by Nissan, Nissan Partners develop the conversion offer and ensure the conversion warranty.

CREW VAN



UP TO 4 SEATS: 2 front seats + 2 rear seats
PAYLOAD: 740KG
LOAD VOLUME: 2.4/3.6M³

Crew Van available from CY2020 H1

WOOD FLOOR CONVERSION



ISOTHERM FRIDGE



COOLING SPECS: Class A (from +2°C to +12°C)
VOLUME: 1.85/2M³

* 5 Year/100,000 miles (whichever comes first)
Manufacturer Warranty for the LCV range (with the exception of e-NV200: 8 Year/100,000 miles Lithium-ion battery state of health guarantee, 5 Year/60,000 miles Manufacturer Warranty for the EV system parts and 3 Year/60,000 miles for the rest of the vehicle)





Innovation
that excites

NISSAN NV250



NISSAN NV250 PANEL AND CREW VAN

VISIA

SAFETY

- ABS with EBD
- ESC with Hill Start Assist and Extended Terrain Grip
- Driver airbag
- Alarm
- Deadlocking
- Spare wheel
- Anchorage points in load area
- Remote central locking (2 button key)

EXTERIOR

- Wheel covers
- Nearside panel sliding door
- Daytime running lights (bulb)
- 180° rear panel doors

INTERIOR

- Full steel bulkhead
- Central console with armrest
- Closed glove box (not lockable)
- 12v power socket (front)

COMFORT AND CONVENIENCE

- Remote control door locking
- Central storage tray & armrest
- DAB Radio + Bluetooth & USB
- Steering wheel radio controls
- Electric front windows
- Electric heated door mirrors
- Manual air-conditioning with pollen filter (only on 115hp)

OPTIONS*

- Offside panel sliding door (standard on L2)
- Glazed rear doors**
- Glazed tailgate** (N/A on L2)
- Glazed pack** (glazed side sliding doors and rear doors)
- Swivelling bulkhead & foldable passenger seat

CREW VAN ADD INS

- Movable bulkhead behind the 2nd row
- Two panel* sliding door with opening windows

**With unglazed bulkhead

***Glazed sliding doors as option

ACENTA

IN ADDITION TO VISIA

COMFORT AND CONVENIENCE

- Manual air-conditioning
- Front fog lights
- Reverse parking sensors
- On-board computer
- Height adj. on driver seat
- One-touch front windows
- Rubber mat load compartment
- Electric folding door mirrors

EXTERIOR

- Daytime running lights (LED)

INTERIOR

- Overhead parcel shelf

OPTIONS*

- Offside sliding door (standard on L2)
- Glazed rear doors**
- Glazed tailgate** (N/A on L2)
- Glazed pack** (glazed side sliding doors and rear doors)
- Swivelling bulkhead & foldable passenger seat
- Rear camera, automatic wipers & automatic headlights

TEKNA

IN ADDITION TO ACENTA

COMFORT AND CONVENIENCE

- Nissan Connect with Sat Nav, Trip Summary, eco-scoring, eco-navigation
- Android Auto, Multiple-phone connection, Voice Recognition
- Rear View Camera
- Cruise Control + Speed Limiter
- Automatic Headlights
- Automatic Wipers

SAFETY

- Tyre Pressure Monitoring System

EXTERIOR

- Painted bumpers
- Black bezel front lights

INTERIOR

- Leather steering wheel

OPTIONS***

- Offside sliding door (standard on L2)
- Glazed rear doors**
- Glazed tailgate** (N/A on L2)
- Glazed pack** (glazed side sliding doors and rear doors)
- Swivelling bulkhead & foldable passenger seat

*Options available at additional cost
**with unglazed bulkhead.

COLOURS



White (QNG)
S



Red (Z52)
S



Grey (G25)
S



Black (BO0)
M



Brown (ZNB)
M



Light Blue (B13)
M



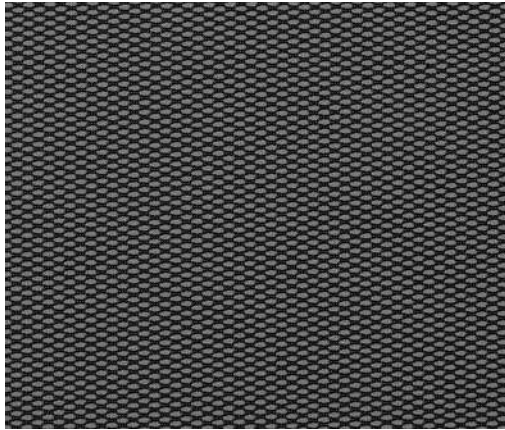
Dark Grey (KNG)
M



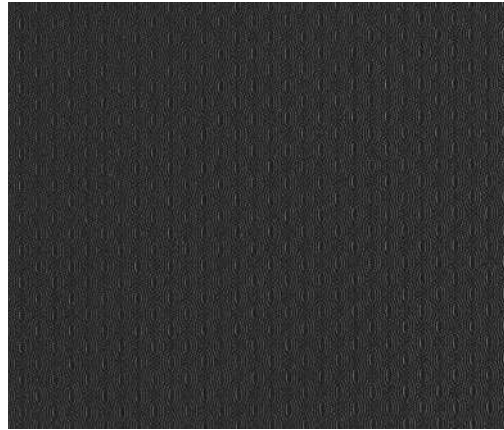
Silver Grey (KQA)
M

S: Solid Paint
M: Metallic Paint

TRIMS



Blended Fabric
PANEL VAN & CREW VAN
(order code "O")



Vegan Leather
PANEL VAN & CREW VAN (Special Orders only)
(order code "S")

WHEELS



15" Steel wheels with full wheel covers
PANEL VAN & CREW VAN



15" Alloy wheels
PANEL VAN & CREW VAN (Option)
(order code "ALW15")

NV250 TECHNICAL SPECIFICATIONS

MODEL					
Body			Van		Crew Van
Derivative			L1	L2	L2
Seats			2	2	4
OVERALL DIMENSIONS					
Length		mm	4,282	4,666	4,666
Wheelbase		mm	2,697	3,081	3,081
Width (with mirrors)		mm	2,138	2,138	2,138
Width (without mirrors)		mm	1,829	1,829	1,829
Height	Unladen (max)	mm	1,844	1,836	1,826
	Unladen (min)	mm	1,805	1,810	1,802
Height on hinged doors	Min	mm	1,872	1,893	1,878
	Max	mm	1,934	1,920	1,902
Threshold unloaded	Min	mm	558	575	563
	Max	mm	609	601	586
Overhang	Front	mm	875	875	875
	Rear	mm	710	710	710
Track	Front	mm	1,521	1,521	1,521
	Rear	mm	1,534	1,533	1,533
Ground Clearance	Unladen	mm	172	172	172
CARGO / LUGGAGE AREA DIMENSIONS					
Maximum Length		mm	1,731	2,115	1,432
Max loading internal length (with full bulkhead)		mm	1,476	1,862	1,361
Max loading internal length (with passenger seat fully folded)		mm	2,502	2,886	-
Maximum Width between the Wheelarches		mm	1,218	1,218	1,218
Maximum Height		mm	1,251	1,252	1,154
Cargo Volume	Max	m ³	3.0	4.0	2.4
With Swivelling Bulkhead and Passenger Seat fully folded		m ³	3.5	4.6	3.6
CHASSIS					
Braking System			Front/rear disks	Front/rear disks	Front/rear disks
Wheel Size			15"	15"	15"
Tyre Size			195.0	195.0	195
Min. Turning Circle (Kerb to Kerb)		m	10.7	11.9	11.9
WEIGHTS			80 dCi / 95 dCi / 115 dCi	95 dCi / 115 dCi	95 dCi / 115 dCi
Gross Vehicle Weight		Kg	1980	2200	2,175/2,186
Kerb Weight	Min	Kg	1309/1309/1320	1406/1418	1,476/1,487
Maximum Payload		Kg	671/671/660	794/782	699
Gross Axle Weight	Front	Kg	1080	1125	1,125
	Rear	Kg	1070	1240	1,240
Towing Capacity	Braked	Kg	1050	1050	1,050
	Unbraked	Kg	690/690/695	740/745	750
Gross Train Weight	Braked	Kg	3030	3250	3,225/3,236

MODEL					
Emissions Class			Euro 6d-TEMP		
ENGINE			80 dCi	95 dCi	115 dCi
No. of Cylinders/ Valves per Cylinder			4 / 2		
Engine Capacity		cm³	1461		
Bore x Stroke		mm	76 x 80.5		
Maximum Engine Power		PS(KW)@rpm	80 (59) @ 3,750	95 (70) @ 3,750	115 (85) @ 3,750
Maximum Torque		Nm@rpm	210 @ 1,750	230 @ 1,750	260 @ 1,750
Fuel type			diesel		
Fuel Supply			Common Rail Direct Injection		
DRIVETRAIN					
Gearbox		Type	6 Speed Manual		
Gearbox Performance		1st*	4.6		
		2nd*	8.8		
		3rd*	14.0		
		4th*	20.4		
		5th*	26.2		
		6th*	30.6		
*Speed (MPH) per 1,000rpm		Rev	4.6		
Final Drive Ratio			4.214		
Driven Wheels			Front		
FUEL CONSUMPTION & EMISSIONS					
Fuel tank capacity		Litres	60		
AdBlue tank capacity		Litres	17.4		
Fuel consumption (NEDC-BT)	Urban Cycle	MPG	58.9 (L1)	58.9 (L1) / 55.4 (L2)	54.3 (L1) / 53.3 (L2)
	Extra Urban	MPG	65.7 (L1)	67.3 (L1) / 64.2 (L2)	65.7 (L1) / 64.2 (L2)
	Combined	MPG	62.8 (L1)	62.8 (L1) / 60.1 (L2)	61.4 (L1) / 58.9 (L2)
CO2 Emissions (NEDC-BT)	Combined	g/km	118 (L1)	117 (L1) / 122 (L2)	122 (L1) / 125 (L2)
PERFORMANCE					
Maximum Speed		mph	95	101	108
WARRANTY					
			5 year / 100,000 miles		
SERVICE					
			2 years / 18,000 miles		

* According to Directive 80/1268/CEE CEE; Last amendment 2004/3/CE

** Official fuel consumption figures are produced for comparability purposes; only compare figures with vehicles tested to the same technical procedures. Actual real-world driving results may vary depending on factors such as weather conditions, driving styles, vehicle load or any accessories fitted after registration. WLTP is a new test used for fuel consumption and CO₂ figures, however the CO₂ and fuel consumption figures are based on the outgoing NEDC test cycle which have been back-translated from WLTP to NEDC.





NISSAN LCV 5 YEAR MANUFACTURER WARRANTY

Nissan now offers a standard 5-Year / 100,000 miles Pan-European Manufacturer Warranty for its LCV range.*



- 5 Year or 100,000 miles bumper-to-bumper protection
- 5-Year NISSAN Genuine Parts & Accessories Warranty
- 5-Year Roadside Assistance
- Fully transferable

And with service intervals at 2 Years or 18,000 miles on the NV250, you'll not only have 5 years of peace of mind but also low running costs into the bargain.



AT NISSAN, YOU BRING OUT THE BEST IN US.

You spark our imagination. You provoke our ingenuity. You inspire us to change the rules and innovate. And at Nissan, innovation is not just about additions and extensions; it's about crossing the line to reinvent the status quo. It's about developing unexpected solutions to satisfy your wildest and most pragmatic desires. At Nissan, we design vehicles, accessories and services that break the mould - making the practical exciting and the exciting practical to offer you a more exhilarating driving experience everyday.

*5 Year/100,000 miles (whichever comes first) Manufacturer Warranty for the LCV range (with the exception of e-NV200: 8 Year/100,000 miles Lithium-Ion battery state of health guarantee, 5 Year/60,000 miles Manufacturer Warranty for the EV system parts and 3 Year/60,000 miles for the rest of the vehicle). Unlimited mileage for Paintwork, Nissan Genuine Parts & Accessories, Roadside Assistance & Corrosion Warranties.

For more details, please refer to Nissan Warranty Booklet.

CUSTOMER SERVICES



SPECIALISED LCV NETWORK

NISSAN provides a specialised network of LCV dealerships to support your specific commercial vehicle requirements:

- Pan-European coverage
- Dedicated LCV Sales & After Sales staff
- Competitive financing solutions
- Tailor made conversion offers
- Competitive extended warranty offers to go even beyond NISSAN LCV 5 Year Warranty.
- Test drive your choice



AFTERSALES SERVICES

If your car breaks down, it's inconvenient. If your van breaks down, it's a serious blow to your business. Even time allowed for servicing is downtime, when your van isn't earning its keep. At Nissan, we understand these hard business facts. So we do the best to ensure that your van stays where it belongs – working for you, on the road.



NISSAN SERVICE CONTRACTS

Together, you and your Nissan dealer can establish a Nissan Service Contract which provides Service and Maintenance cover for the mileage and period that suits your business best. Giving you true peace of mind, this Contract will ensure that your NV250 is cared for by dedicated Nissan technicians.



5 YEAR ROADSIDE ASSISTANCE

- Pan-European coverage for breakdowns, accidents, non-warrantable incidents (such as flat tyres, lost keys, wrong fuel...)
- 24/7, 365 days
- Emergency Call Centre
- Prompt roadside assistance

If this is not possible and your vehicle is still immobilised after a few hours, we will make sure you are provided with a courtesy vehicle as soon as possible or if necessary, overnight accommodation and travel to your onward destination or back to your base. We will also recover your immobilised vehicle.

visit our website at: www.nissan.co.uk

Follow Nissan LCV on:



***5-Year / 100,000 miles (whichever comes first) Manufacturer Warranty for the LCV range**

Every effort has been made to ensure that the content of this publication is correct at the time of going to print (July 2020). This brochure has been produced featuring prototype vehicles exhibited at motor shows. In accordance with the company's policy of continuously improving its products, Nissan Europe reserves the right to change at any time the specification and the vehicles described and shown in this publication. Nissan dealers will be informed of any such modifications as quickly as possible. Please check with your local Nissan dealer to receive the most up-to-date information. Because of the limitations of the printing processes used, the colours shown in this brochure may differ slightly from the actual colours of the paint and interior trim materials used. All rights reserved. Reproduction in whole or part of this brochure without the written permission of Nissan Europe is forbidden.

Part number: 99999-54434.

This brochure is made from chlorine free paper – NV250 BROCHURE RHD 11/2019 – Printed in EU.
Created by CLM BBDO, France – Tel.: +33 1 41 23 41 23 and produced by eg+ worldwide, France – Tel.: +33 1 49 09 25 35.

Dealer stamp:



PURE VANS

Telephone - 01633-212944

Email - sales@purevans.com

www.purevans.com