



**PURE VANS**

**Telephone - 01633-212944**

**Email - sales@purevans.com**

**www.purevans.com**



Innovation  
that excites

## NISSAN NAVARA

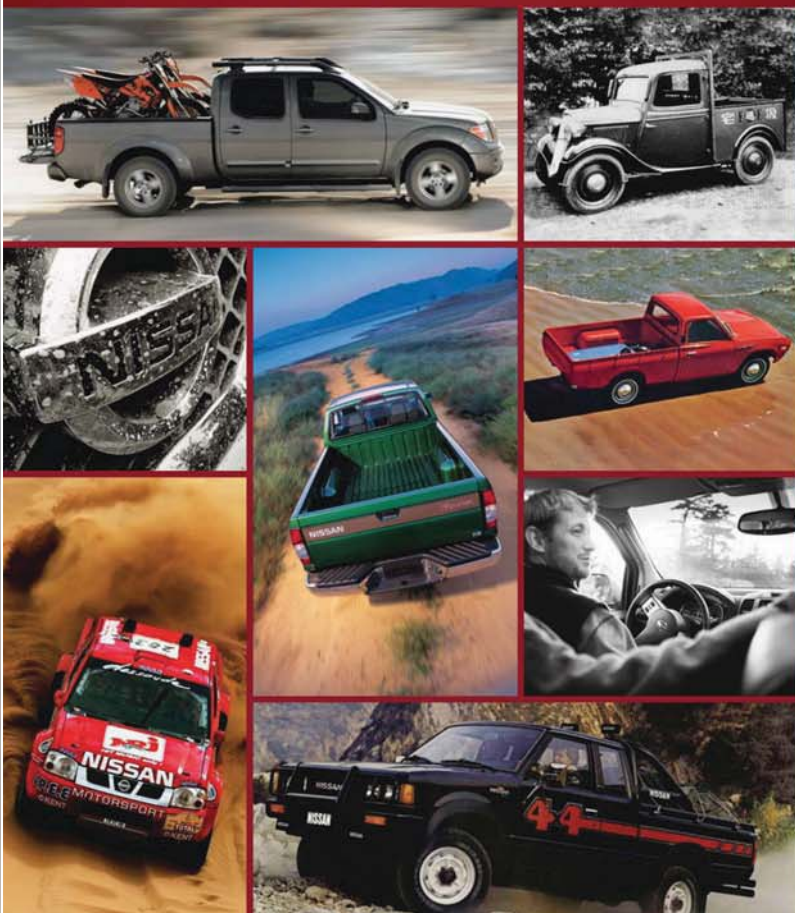


[Introduction](#) | [Exterior design](#) | [Versatility](#) | [Interior design](#) | [Technology and Performance](#) | [Accessories](#) | [Technical Specifications](#) | [CO2 emissions](#) | [Further Information](#) | [Commitments](#) | [Print](#) | [Close](#)

[REQUEST A TEST DRIVE](#)



Tough, agile and stylish, the new Nissan NAVARA 4x4 is the latest in a long line of Nissan pick-ups – we produced our first in 1935. Along the way we've pioneered the King Cab in 1977, the innovative C-channel lashing system in 2005, and now the first use on a one-ton pick-up of 5 link rear suspension. Our proud legacy, shared among **14 MILLION PICK-UP OWNERS** blazing trails in **180 COUNTRIES** continues today. As long as there's adventure on the horizon, Nissan will lead the way.



[Introduction](#) | [Exterior design](#) | [Versatility](#) | [Interior design](#) | [Technology and Performance](#) | [Accessories](#) | [Technical Specifications](#) | [CO2 emissions](#) | [Further Information](#) | [Commitments](#) | [Print](#) | [Close](#)

[Page 1](#) | [Page 2](#)

[REQUEST A TEST DRIVE](#)





# TOUGH AND SMART

We've always built strong, dependable pick-ups and we've consistently innovated to deliver what you want. The 2.3L dCi engine, in 190PS twin turbo or 160PS single turbo forms and linked to a 2WD or 4WD transmission, delivers the rugged performance and best-in-class fuel economy you demand from a Nissan pick-up. With fuel economy of up to 46.3mpg, it takes you off and on road without missing a beat - and with a standard 5 Year / 100,000 mile warranty, that's a promise you can trust. Experience the versatility and efficiency of the next generation Nissan pick-up - tough as always, smarter than ever.

\*Image for illustration purposes only. Please consult the technical specification for full line-up details.





## THE PICK-UP YOU CAN TRUST, RIGHT DOWN TO ITS CORE.

The new Nissan NAVARA 4x4 pick-up has a fully boxed ladder chassis rather than the three-sided channel-section frame found on some other pick-ups. There's also a new 5 link coil spring rear suspension, unique in the one-tonne pick-up segment. This gives a better ride and more agile handling, without compromising load-carrying ability.



ANGLE OF  
APPROACH  
30.4°

WADING  
DEPTH  
600 mm

Figures are for a NAVARA Double Cab. Figures may vary according to grade and cab type. Please consult the technical specification for full line-up details.

ANGLE OF  
DEPARTURE  
25.6°

223mm  
MIN GROUND  
CLEARANCE



## FULLY BOXED. FULLY CAPABLE.

Pull up to 3,500kgs, carry over 1-tonne payload and experience enhanced performance on all terrains. The new Nissan NAVARA's fully boxed ladder frame is made with rugged high-tensile strength steel for improved structural rigidity and more torsional stiffness.

[Introduction](#) | [Exterior design](#) | [Versatility](#) | [Interior design](#) | [Technology and Performance](#) | [Accessories](#) | [Technical Specifications](#) | [CO2 emissions](#) | [Further Information](#) | [Commitments](#) | [Print](#) | [Close](#)

[Page 1](#) | [Page 2](#) | [Page 3](#) | [Page 4](#)

[REQUEST A TEST DRIVE](#)





Hill Start Assist



Part-time  
four wheel drive\*



Electronic Limited Slip  
Differential (eLSD)



Rear Differential  
Lock\*



Hill Descent Control\*

## CLIMB, CRAWL AND POWER YOUR WAY THROUGH.

Whether it's the depths of the country or the concrete jungle, the new Nissan NAVARA is always in its element. There are three driving modes – 4WD High for light off-roading, 4WD Low for serious off-road driving in sand, snow or deep mud, or 2WD for when you're on tarmac. With features such as Hill Start Assist and Hill Descent Control, it's the pick-up that's ready for anything, giving great traction even in 2WD mode with thanks to its electronic Limited Slip Differential (eLSD).

\*Not available on all grades. Please consult the technical specification for full line-up details.  
Image for illustration purposes only. Please consult the technical specification for full line-up details.

**Hill Start Assist and Hill Descent Control\*.** Tackling hilly terrain? Now you can do it with more confidence and control. On an incline, Hill Start Assist can help keep you from rolling backwards when you're accelerating from a stop. Hill Descent Control helps you maintain a steady and constant speed, so that you descend a steep gradient safely.





## DEVOURS ROADS.

Outside, it's a 4x4 pick-up. Inside, the new Nissan NAVARA is more like a premium Crossover. Check out the ergonomic design of the dashboard and the high quality trim materials used. Relax in the NASA designed spinal-support seats, set the dual-zone Automatic climate Control and revel in the comfort of multi-link coil spring rear suspension. More than a workhorse, this pick-up's a pleasurable daily ride.

### 2.3-LITRE DCI ENGINE

Generating more horsepower and torque and with fuel efficiency improvements over the outgoing model of 24%, the new 2.3-litre 190PS twin-turbo diesel engine with either a 6-speed manual or 7-speed automatic transmission delivers fantastic acceleration and performance. The 160PS single-turbo version offers leading fuel economy of up to 46.3mpg.

ENGINE DISPLACEMENT	2298 CC
FUEL TYPE	DIESEL
FUEL CONSUMPTION	UP TO 46.3mpg
EMISSIONS (CO <sub>2</sub> )	FROM 159 G/KM
POWER	160 PS (120 kW) 190 PS (140 kW)
TORQUE	403 NM @ 1500 RPM 450 NM @ 1500 RPM
MAXIMUM TOWING	3,500 KG
MAXIMUM PAYLOAD	1,156 KG

FUEL ECONOMY  
UP TO  
**46.3** MPG



# PULLING POWER

Of course the boat can come along, because heavy duty towing is engineered right into the NAVARA, with a towing capacity of 3,500kg on all 4WD models. Heavy duty components such as the brakes, transmission and cooling system, plus plenty of power and low end torque mean you're ready to pull some serious weight.



3,500KG  
TOWING CAPACITY\*

\*2WD Towing capacity 3035kg.

REQUEST A TEST DRIVE





## LOAD UP OUR MOST VERSATILE PICK-UP BED EVER.

The new Nissan NAVARA is engineered to handle tough jobs and heavy payloads of over 1 tonne. A lighter tailgate makes loading and unloading simple. Ensuring your cargo is secure is easy, too, thanks to Nissan's revolutionary C-channel tie-down system\*. Moveable cleats can be locked anywhere in special tracks and on the three sides of the pick-up bed, so you can secure your load.

**1T**  
OVER 1 TONNE  
PAYLOAD

\*Optional on VISIA, standard from ACENTA.  
Please consult the technical specification for full line-up details.

[Introduction](#) | [Exterior design](#) | [Versatility](#) | [Interior design](#) | [Technology and Performance](#) | [Accessories](#) | [Technical Specifications](#) | [CO2 emissions](#) | [Further Information](#) | [Commitments](#) | [Print](#) | [Close](#)

[REQUEST A TEST DRIVE](#)





The King Cab has rear doors that are hinged from the rear and have no B pillar, giving passengers easy access to the two rear seats. These seats can also flip up out of the way to reveal a large open space. This, combined with the larger door opening, means that bulkier items can be transported inside the cabin.



Large pockets located in the driver and passenger doors offer ample, easy-to-access storage.



The high-capacity glove compartment is ideal for your documents and files, even the bulkier ones.

## STORE IT. HIDE IT. LOCK IT. LOVE IT.

A thoughtfully designed, flexible interior featuring lots of clever storage space is handy for work and play. There's a spot for your stuff underneath the rear passenger seats, in the side door pockets, in the generous glove compartment and in the large centre console too. Thirsty? You'll find cup-holders almost everywhere you look: next to the front seats and even designed into the front and rear door pockets.

The centre console includes large cupholders and a deep covered storage bin for items you want close at hand but out of sight.

Storage bins conveniently located under the rear seats are perfect for items you want to keep concealed.







\*Available from ACENTA+. Please consult the technical specification for full line-up details.

## RIDE FIRST CLASS EVERY DAY.

In the new Nissan NAVARA, you'll find fantastic levels of comfort and space from every seat. Up front, NASA designed zero-gravity seats create neutral posture and improved blood flow to help make those long rides a lot more comfortable. Plus, automatic air conditioning with dual-zone climate control\* means you and your passengers can tailor the temperature individually, while circular air vents pinpoint exactly where you want the air to go.

[Introduction](#) | [Exterior design](#) | [Versatility](#) | [Interior design](#) | [Technology and Performance](#) | [Accessories](#) | [Technical Specifications](#) | [CO2 emissions](#) | [Further Information](#) | [Commitments](#) | [Print](#) | [Close](#)

[Page 1](#) | [Page 2](#) | [Page 3](#)

[REQUEST A TEST DRIVE](#)





# INNOVATION AT YOUR FINGERTIPS.

The new NAVARA cabin is packed full of the innovative technology seen on Nissan's market-leading Crossover range\*. Nissan Intelligent Key with start push button ignition allows you to lock and unlock the doors\*\* and start the engine without taking the key out of your pocket. The cruise control, speed limiter and AM/FM/CD audio system can all be operated through steering wheel mounted controls. The Bluetooth hands-free phone system lets you make and take calls with ease, while the USB port and the AUX socket allow you to play your favorite music from your phone or MP3 player.

\*Specification varies by grade. Please consult the technical specification for full line-up details.  
\*\*Excludes load-bed. Please consult the technical specification for full line-up details.





## NISSAN ADVANCED DRIVE-ASSIST DISPLAY

# INNOVATION THAT'S RIGHT IN FRONT OF YOU.

With so much going on around you, it's easy to lose sight of what's most important: driving. From fuel economy to song tracks to navigation instructions, the 5" HD full colour TFT screen combimeter\* displays information right in front of you – so you can keep your eyes on the road.





NissanConnect

## YOUR WORLD, SERVED UP.

With NissanConnect 2.0\*, the new Nissan NAVARA can sync perfectly with your smartphone. Your own hand-picked music, Facebook news feed, latest tweets, TripAdvisor tips, and more can all come along for the ride, working seamlessly together through your smartphone and the 7" colour touch-screen. It keeps on getting better: the basic app package is complimentary for the first three years.

The NissanConnect 2.0\* satellite navigation and entertainment system also comes with digital radio (DAB), Bluetooth telephone integration and audio streaming, traffic updates and eco driving tracking.



\*Available from N-CONNECTA. Please consult the technical specification for full line-up details

[Introduction](#) | [Exterior design](#) | [Versatility](#) | [Interior design](#) | [Technology and Performance](#) | [Accessories](#) | [Technical Specifications](#) | [CO2 emissions](#) | [Further Information](#) | [Commitments](#) | [Print](#) | [Close](#)

[Page 1](#) | [Page 2](#) | [Page 3](#) | [Page 4](#) | [Page 5](#)

REQUEST A TEST DRIVE



## NISSAN SAFETY SHIELD

# SURROUND YOURSELF WITH CONFIDENCE.

The Nissan Safety Shield is a comprehensive approach to safety that guides the engineering and development of every vehicle we make. The features described here are just some of many on the new Nissan NAVARA, helping to protect you by focusing on three key areas: keeping an eye on your vehicle's systems and the surroundings, assisting in handling unexpected situations, and helping to keep you safe.

**Traction Control System (TCS).** TCS senses when a drive wheel starts to slip and reduces engine power or applies brake pressure to help restore traction.

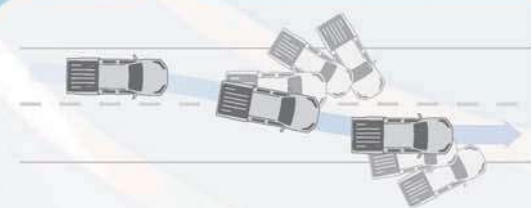
**Zone Body Concept.** Nissan's Zone Body Concept helps absorb the impact and protect the passenger compartment in the event of a collision. It features a high-intensity cabin structure with crossmembers and reinforcements, front and rear crumple zones, and an energy-absorbing steering column.



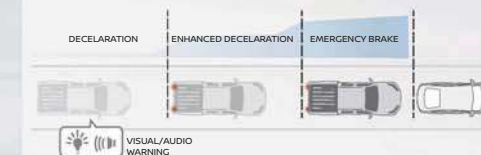
**7 Standard Air Bags.** Driver and passenger airbags in the front, two side-impact air bags mounted in the front seats, two side-impact curtain air bags mounted in the roof and an air bag for the driver's knee.



**Around View Monitor\*.** Four cameras give you a virtual 360° bird's-eye view of your vehicle, with selectable splitscreen close-ups of the front, rear, and curbside views. You can check slow-speed manoeuvring on-road or off-road to avoid obstacles.



**Vehicle Dynamic Control (VDC).** VDC monitors your steering, braking and the vehicle's stability and, if needed, will reduce engine power and apply brake pressure to specific wheels in order to keep you on your intended path.



**Forward Emergency Braking (FEB)\*.** Radar mounted in the front bumper measures the gap to the car in front. If it recognises there is a risk of collision, it will give an audible and visual warning. If the driver doesn't brake enough, the vehicle will automatically brake to help to avoid an accident.

**Anti-lock Braking System (ABS).** ABS prevents the wheels from locking under hard braking, allowing you to stop quicker and at the same time steer around obstacles.

**Electronic Brake force Distribution (EBD).** EBD automatically sends extra force to the rear brakes when it detects there's additional weight in the back.

**Electronic Limited Slip Differential (eLSD)\*.** In low-traction conditions (snow, mud, dirt, bumps, slopes, etc.) the vehicle senses if one wheel is slipping and automatically slows that wheel using the brakes to regain traction and keep you moving. Works on all 4 wheels.

\*Items not available on all grades. Please consult the technical specification for full line-up details.





## WORK HARDER FOR LONGER

Engineered to give years of tough, reliable service, the new NAVARA is the pick-up of the pros. Heavy duty to the core and built to last, it's a highly dependable partner which will help your business thrive. Fully equipped with Nissan's latest technology suite, this workhorse has true pedigree.



[Introduction](#) | [Exterior design](#) | [Versatility](#) | [Interior design](#) | [Technology and Performance](#) | [Accessories](#) | [Technical Specifications](#) | [CO2 emissions](#) | [Further Information](#) | [Commitments](#) | [Print](#) | [Close](#)

[Page 1](#) | [Page 2](#) | [Page 3](#) | [Page 4](#) | [Page 5](#)

[REQUEST A TEST DRIVE](#)





# WEIGH YOUR OPTIONS.

The new Nissan NAVARA meets the needs of businesses with a diverse range of vehicles. Choose from the increased load bed capacity of the King Cab or the crew-friendly seating of the Double Cab. Chassis versions without the rear load bed are also available for conversion purposes.

REQUEST A TEST DRIVE





**STAY IN SHAPE WITH  
NISSAN GENUINE ACCESSORIES**

Style and protect your pick-up with Nissan Genuine Accessories, tailor-made for NAVARA to keep it tougher and smarter for longer.



- 1- Tonneau cover, soft
- 2- Roll cover
- 3- Tonneau cover, aluminium
- 4- Hard top
- 5- Chrome side styling bar stainless steel
- 6- Chrome front styling bar stainless steel
- 7- Plastic bedliner
- 8- Tailgate protection in plastic
- 9- Aluminium bedliner



Stop lamp



Interior lighting\*



Interior trims\*



Opening windows\*

\* Not available on standard version





COLOURS

M: Metallic - S: Solid



ALABASTER WHITE (S)



EARTH BRONZE (M)



SAVANNAH YELLOW (M)



STARBURST SILVER (M)



FLAME RED (S)



BLACK (M)



TWILIGHT GREY (M)



CAYMAN BLUE (M)

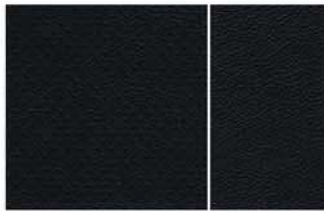
TRIMS



VISIA & ACENTA - GRAPHITE CLOTH



ACENTA+ & N-CONNECTA -  
PREMIUM GRAPHITE CLOTH



TEKNA - GRAPHITE LEATHER

WHEELS



16" STEEL WHEELS  
VISIA



16" ALLOY WHEELS  
ACENTA



18" ALLOY WHEELS  
ACENTA+, N-CONNECTA, TEKNA

DIMENSIONS



**DOUBLE CAB**  
A: Overall height: 1,840 MM (with roof bars)  
B: Overall length: 5,330 MM  
C: Overall width: 2,085 MM (with opened mirrors)



**KING CAB**  
A: Overall height: 1,790 MM  
B: Overall length: 5,225 MM  
C: Overall width: 2,085 MM (with opened mirrors)

**BED**  
Height: 474 MM (tailgate lift height)  
Length: 1,788 MM (at floor)  
Width: 1,560 MM (max)



Dimensions vary by grade. Please consult the technical specification for full line-up details.

## NISSAN LCV 5 YEAR / 100,000 MILE MANUFACTURER WARRANTY

Nissan now offers a standard 5 Year Pan-European Manufacturer Warranty on its whole LCV range\*. This is much more than just a warranty as it includes:



- 5 year or 100,000 Mile bumper-to-bumper protection
- 5 Year Paintwork Warranty – covering the body paint
- 5 Year Nissan Genuine Parts & Accessories Warranty
- 5 Year Roadside Assistance
- 12 Year Corrosion Warranty on NAVARA
- Fully transferable

And with service intervals at 24 months or 18,000 miles for new NAVARA, you'll not only have 5 years' peace of mind but also low running costs into the bargain.



### AT NISSAN, YOU BRING OUT THE BEST IN US.

You spark our imagination. You provoke our ingenuity. You inspire us to change the rules and innovate. And at Nissan, innovation is not just about additions and extensions; it's about crossing the line to reinvent the status quo. It's about developing unexpected solutions to satisfy your wildest and most pragmatic desires. At Nissan, we design vehicles, accessories and services that break the mould - making the practical exciting and the exciting practical to offer you a more exhilarating driving experience everyday.

\*5-Year / 100,000 miles (whichever comes first) Manufacturer Warranty for the LCV range (with the exception of e-NV200). The Basic Vehicle Warranty for e-NV200, according to 3.1 of the Warranty Booklet and Maintenance Record, is extended to 5 years (from the warranty start date) / 60,000 miles (whichever comes first). Only vehicles registered on or after 1st November 2016 are eligible for the Extended Warranty. Body parts and paint excluded during year four and year five. Terms and exclusions apply, for further information please see Extended Warranty Terms and Conditions. Apart from the afore-mentioned, all warranty conditions included in the Warranty Booklet and Maintenance Record remain unchanged. Issuer of this Extended Warranty is Nissan International Insurance Ltd.

Unlimited mileage for Paintwork, Nissan Genuine Parts & Accessories, Roadside Assistance & Corrosion Warranties. For more details, please refer to Nissan Warranty Booklet.

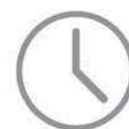
## CUSTOMER SERVICES



### SPECIALISED NETWORK

NISSAN provides a specialised network of dealerships to support your specific vehicle requirements:

- Pan-European coverage
- Dedicated Sales & After Sales staff
- Competitive financing solutions
- Tailor made conversion offers
- Competitive extended warranty offers to go even beyond Nissan LCV Nissan 5 Year / 100,000 Mile Warranty.
- Test drive of your choice



### AFTERSALES SERVICES

If your car breaks down, it's inconvenient. If your pick-up breaks down, it's a serious blow to your business. Even time allowed for servicing is downtime, when your van isn't earning its keep. At Nissan, we understand these hard business facts. So we do the best to ensure that your van stays where it belongs – working for you, on the road.



### NISSAN SERVICE CONTRACTS AND EXTENDED WARRANTY

For total peace of mind and budget control, you can subscribe to a Nissan Service Contract which will cover your periodic maintenance and Wear & Tear parts for the mileage and period that suits your business best. This way, you can ensure that your new NAVARA is serviced by dedicated Nissan technicians. And for even more serenity, you can get an Extended Warranty to cover possible mechanical and electrical breakdown after the end of your new NAVARA warranty.



### 5 YEAR ROADSIDE ASSISTANCE

- Pan-European coverage for breakdowns, accidents, non-warrantable incidents (such as flat tyres, lost keys, wrong fuel...)
- 24/7, 365 days
- Emergency Call Centre
- Prompt roadside assistance

If this is not possible and your pick-up is still immobilised after a few hours, we will make sure you are provided with a courtesy vehicle as soon as possible or if necessary, overnight accommodation and travel to your onward destination or back to your base. We will also recover your immobilised pick-up.





Innovation  
that excites

## NISSAN NAVARA



[Introduction](#) | [Exterior design](#) | [Versatility](#) | [Interior design](#) | [Technology and Performance](#) | [Accessories](#) | [Technical Specifications](#) | [CO2 emissions](#) | [Further Information](#) | [Commitments](#) | [Print](#) | [Close](#)

[Page 1](#) | [Page 2](#) | [Page 3](#) | [Page 4](#) | [Page 5](#) | [Page 6](#) | [Page 7](#) | [Page 8](#)

REQUEST A TEST DRIVE

# STANDARD EQUIPMENT

THE NISSAN NAVARA raises the bar for style and performance in the pick-up market, combining the best of Nissan’s crossover leadership with over 80 years of experience in designing and manufacturing robust and dependable pick-ups. Welcome to the versatile and efficient next generation Nissan pick-up - tough as always, smarter than ever.

## KEY FEATURES THAT COME AS STANDARD

### COMFORT AND CONVENIENCE

- 5" High Definition full colour TFT screen combimeter
- 5 link rear suspension (Double Cab)
- Steering wheel mounted audio controls
- Power steering
- Front electric windows
- Rear electric windows (Double Cab)
- High mounted LED centre brake light
- Trip computer
- Electrically adjustable door mirrors
- Rear ventilation
- 4 way adjustable passenger seat
- Folding rear seats (King Cab)
- Leaf spring rear suspension (King Cab)
- External temperature sensor

### EXTERIOR STYLING

- Tailgate spoiler
- Load restraint hooks
- Mudguards (front and rear)

### AUDIO AND NAVIGATION

- Bluetooth® telephone integration
- 2 speakers (King Cab)
- 4 speakers (Double Cab)
- USB port
- AUX socket for MP3 player
- AM/FM/CD audio system

### INTERIOR STYLING

- 3x 12V power sockets
- Front armrest

### TECHNOLOGY

- Automatic headlights with Follow Me Home
- Electronic Limited-Slip Differential (eLSD) with cut-off
- Stop/Start technology (Manual only)
- Cruise control and speed limiter
- Selective Catalytic Reduction (SCR) system - uses AdBlue® to reduce NOx emissions

### SAFETY AND SECURITY

- ABS with EBD and Brake Assist
- Forward Emergency Braking (Double Cab)
- Vehicle Dynamic Control (VDC)
- Hill Start Assist
- Hill Descent Control (4WD only)
- Daytime Running Lights
- Airbags: 2 x front (steering wheel + top of dash); 2 x curtain (passenger & driver); 2 x seat side (passenger & driver); 1 x knee (driver)
- Passenger airbag cut off switch
- Rear ISOFIX childseat anchorage points (Double Cab)
- 3 adjustable rear head restraints (Double Cab)
- Nissan approved alarm system
- Nissan Anti Theft System immobiliser
- Remote central door locking
- Locking wheel nuts
- Spare wheel lock
- 16" Steel spare wheel

## VISIA

### IN ADDITION TO STANDARD EQUIPMENT

#### EXTERIOR STYLING

- 16" Steel wheels
- Black front bumper (King Cab)
- Body coloured front bumper (Double Cab)
- Black tube rear bumper
- Black front grille
- Black door handles
- Black door mirrors

#### INTERIOR STYLING

- Cloth seats

#### COMFORT AND CONVENIENCE

- Front manual air conditioning (4WD only)
- 6 way adjustable drivers seat

#### TECHNOLOGY

- Manual dimming rear view mirror

#### OPTIONS\*

- C-Channel moveable tiedown points
- Rear differential lock
- Guard frame



Image shown is NAVARA VISIA King Cab with optional C-Channel and Guard Frame system fitted.  
\*Options available at additional cost.  
\*\*Also built as a chassis version without rear load bed. Built to order. Contact your local dealership for further information.



# ACENTA

## IN ADDITION TO VISIA

### EXTERIOR STYLING

- 16" Alloy wheels
- C-Channel moveable tiedown points
- Body coloured front bumper
- Chrome Daytime Running Light surrounds
- Chrome front grille
- Chrome door handles
- Door step lights
- Chrome wheel nuts
- 6 speakers

### INTERIOR STYLING

- Chrome interior door handles

### TECHNOLOGY

- Nissan Intelligent Key
- Start push button

### OPTIONS\*

- Rear differential lock
- Guard frame



\*Options available at additional cost

# ACENTA+

## IN ADDITION TO ACENTA

### EXTERIOR STYLING

- 18" Alloy wheels
- Rear privacy glass
- LED door mirror indicators
- Side steps
- Chrome rear step bumper
- Chrome door mirrors

### SAFETY AND SECURITY

- Front fog lights with chrome surrounds

### COMFORT AND CONVENIENCE

- Automatic air conditioning with dual zone climate control
- Pollen filter
- Colour reversing camera (shown in rear view mirror)
- Heated door mirrors
- Electric folding door mirrors

### TECHNOLOGY

- Automatic dimming rear view mirror

### INTERIOR STYLING

- Leather steering wheel
- Leather gear knob

### OPTIONS\*

- Rear differential lock



\*Options available at additional cost

## N-CONNECTA

### IN ADDITION TO ACENTA+

#### AUDIO AND NAVIGATION

- NissanConnect 2.0 Satellite Navigation and Entertainment System with:
  - High resolution 7" touchscreen
  - DAB Digital Radio
  - Colour reversing camera (shown in touchscreen)
  - Smartphone App integration
  - Bluetooth® audio streaming
  - Traffic updates

#### OPTIONS\*

- Rear differential lock
- Roof Rails



## TEKNA

### IN ADDITION TO N-CONNECTA

#### EXTERIOR STYLING

- Roof rails

#### COMFORT AND CONVENIENCE

- LED headlights
- LED Daytime Running Lights
- 8 way adjustable driver's seat
- Front heated seats

#### TECHNOLOGY

- Rear parking sensors

#### INTERIOR STYLING

- Leather seats\*\*
- Leather handbreak

#### AUDIO AND NAVIGATION

- Around View Monitor - 4 cameras give a bird's eye 360° view of the vehicle

#### OPTIONS\*

- Rear differential lock
- Sunroof



\*Options available at additional cost.  
\*\*Some parts of leather seats may contain artificial leather.



## OFF-ROADER AT32

### IN ADDITION TO TEKNA

#### SAFETY & SECURITY

- Rear Differential Lock
- Increased Ground Clearance (+20 mm)
- Steel underbody protection

#### EXTERIOR STYLING

- 17" Black Alloy Wheels
- 32" Nokian Off-Road Tyres
- Black Side Steps
- Artic Truck Rear Mud Guards
- Black Wheel Arches
- AT32 exterior badges

#### OPTIONS\*

- Safari Snorkel
- Front Differential Lock
- Full Size Off-Road Spare Wheel & Tyre





## COLOURS

(S) = Solid  
(M) = Metallic (cost option)  
(P) = Pearlescent (cost option)



ALABASTER WHITE (S)



FLAME RED (S)



STORM WHITE (P)\*



STARBURST SILVER (M)



TWILIGHT GREY (M)



METALLIC BLACK (M)



EARTH BRONZE (M)



SAVANNAH YELLOW (M)



CAYMAN BLUE (M)

\*Storm White only available on Acenta+, N-Connecta and Tekna grade.

## TRIMS



VISIA and ACENTA  
GRAPHITE CLOTH



ACENTA+ and N-CONNECTA  
PREMIUM GRAPHITE CLOTH



TEKNA and OFF-ROADER AT32  
GRAPHITE LEATHER

## WHEELS



VISIA  
16" STEEL WHEELS



ACENTA  
16" ALLOY WHEELS



ACENTA+, N-CONNECTA and TEKNA  
18" ALLOY WHEELS



OFF-ROADER AT32  
17" ALLOY WHEELS



NAVARA TECHNICAL SPECIFICATION

MODEL		KING CAB		KING CAB		DOUBLE CAB				
Available grades		VISIA	VISIA	VISIA	ACENTA	VISIA	ACENTA	ACENTA*, N-CONNECTA, TEKNA		OFF-ROADER AT32
Engine		2.3L dCi Single Turbo	2.3L dCi Single Turbo		2.3L dCi Single Turbo		2.3L dCi Twin Turbo		2.3L dCi Twin Turbo	
Transmission		6 speed manual	6 speed manual		6 speed manual		6 speed manual	7 speed auto	6 speed manual	7 speed auto
Drivetrain		Part time 4WD	2WD	Part time 4WD	Part time 4WD				Part time 4WD	
Seating capacity	persons	4	4		5				5	
ENGINE PERFORMANCE & DESCRIPTION										
Max engine power	PS (kW) @ rpm	163 (120) @ 3,750	163 (120) @ 3,750		163 (120) @ 3,750		190 (140) @ 3,750		190 (140) @ 3,750	
Max engine torque	Nm @ rpm	403 @ 1,500-2,500	403 @ 1,500-2,500		403 @ 1,500-2,500		450 @ 1,500-2,500		450 @ 1,500-2,500	
Emission class		Euro6								
No. of cylinders/ configuration		4/in-line								
No. of valves per cylinder/configuration		4/DOHC								
Engine displacement	cc	2,298								
Compression ratio		15.4								
Fuel type		Diesel / Biodiesel (B10 max)								
Aftertreatment system		DOC-DPF								
CHASSIS										
Frame type		Ladder type								
Front suspension		Double wishbone with coil over strut								
Rear suspension		Rigid leaf spring	Rigid leaf spring		5 link with coil spring					
Steering system		Rack & Pinion Power Assisted								
Turning circle diameter, kerb to kerb	m	11.8	11.8	12.4	12.4				12.4	
Brake type (front/rear)		296mm Ventilated Disc / 295mm Drum								
Wheel size		16 x 6.0J (55)	16 x 6.0J (55)	16 x 7.0J (45)	16 x 7.0J (45)	16 x 7.0J (45)	18 x 7.0J (45)		17 x 8.0J (25)	
Tyre size		205 R16C	205 R16C	255/70 R16	255/70 R16	255/70 R16	255/60 R18		275/70 R17	
FUEL CONSUMPTION										
Fuel tank capacity	litres	73								
AdBlue Tank capacity	litres	17								
Fuel consumption	Combined (mpg)	**	46.3	44.9	44.9		44.9	41.0	44.9	41.0
	Extra-Urban (mpg)	**	48.7	46.3	46.3		47.1	47.9	47.1	47.9
	Urban (mpg)	**	43.5	41.6	41.6		41.0	32.5	41.0	32.5
CO2 emissions	Combined (g/km)	**	159	167	167		167	183	167	183

\*Without driver, with full fuel tank. Will vary with grade-standard equipment and option/accessory equipment.  
\*\*Dependent on conversion.

MODEL		KING CAB		KING CAB			DOUBLE CAB				
Available grades		VISIA	VISIA	VISIA	ACENTA	VISIA	ACENTA	ACENTA+ N-CONNECTA, TEKNA		OFF-ROADER AT32	
Engine		2.3L dCi Single Turbo	2.3L dCi Single Turbo		2.3L dCi Single Turbo		2.3L dCi Twin Turbo		2.3L dCi Twin Turbo		
Transmission		6 speed manual	6 speed manual		6 speed manual		6 speed manual	7 speed auto	6 speed manual	7 speed auto	
Drivetrain		Part time 4WD	2WD	Part time 4WD		Part time 4WD			Part time 4WD		
PERFORMANCE											
Max speed	mph	**	107		107		114	112	114	112	
Acceleration	0-62mph (seconds)	**	11.6	12.0		12.0		10.8		10.8	
Max ascending grade	%	Over 30%								Over 30%	
Wading depth	mm	600								600 800 (with Snorkel!*)	
VEHICLE DIMENSIONS											
Overall length	mm	**	5,225		5,255	5,300	5,330		5,330		
Overall width	w/o mirrors (mm)	1,790	1,790		1,850	1,850			1,890		
	with mirrors (mm)	2,075	2,075		2,075		2,085		2,085		
Overall height	mm	1,790	1,780	1,780-1,790		1,805-1,840		1,805-1,840		1,880	
Wheelbase	mm	3,150									
Overhangs	Front (mm)	870								870	
	Rear (mm)	**	1,205	1,205-1,235		1,280	1,310		1,310		
Track	Front & Rear (mm)	1,550	1,550	1,550-1,570		1,570			1,570		
Min. ground clearance	mm	196	205	198-213		224-228		224		243	
Approach angle	º	29.0	30.0	30.0-31.0		32.0			35.0		
Departure angle	º	26.0	25.0	25.0-26.0		25.0			25.7		
Breakover angle	º	**	21.4	21.2-22.1		22.1-22.2		22.2		24.0	
REAR BED DIMENSIONS (interior)											
Length	Top / Floor (mm)	N/A	1,750 / 1,788		1,537 / 1,578			1,537 / 1,578			
Width	Max. / Between wheel arches (mm)	N/A	1,560 / 1,130		1,560 / 1,130			1,560 / 1,130			
Tailgate height	mm	N/A	474		474			474			
Bed floor height from ground	mm	N/A	795	800-810		805-815		815		815	
WEIGHTS AND CAPACITIES											
Gross vehicle weight	kg	3,035	3,035		3,045			3,045			
Min kerb weight*	kg	1,814	1,879	1,961		1,986		1,998	1,991	2,018	
Max payload**	kg	1,221	1,156	1,074		1,059		1,047	1,054	1,025	
Towing capacity	kg	3,500	3,035	3,500		3,500			3,500		
Gross train weight	kg	6,000									
Max vertical force on towball	kg	140	120	140		140			140		
Max roof load	kg	N/A	N/A		N/A	N/A	56#		56#		

\*When roof rails are fitted. TEKNA grade only. \*\*Individual payload may vary based on selection of additional specification. \*\*\* When optional Safari Snorkel is selected.

PRICELIST

Body	Grade	Engine	Transmission	Drivetrain	Basic Price £	VAT £	Total Retail £	On The Road Price £
Chassis King Cab	VISIA	2.3L dCi 163PS	6 Manual	4WD	20,520.83	4,104.17	24,625.00	24,930.00
King Cab	VISIA	2.3L dCi 163PS	6 Manual	2WD	19,987.50	3,997.50	23,985.00	24,290.00
			6 Manual	4WD	20,820.83	4,164.17	24,985.00	25,290.00
	ACENTA		6 Manual	4WD	21,654.17	4,330.83	25,985.00	26,290.00
Double Cab	VISIA		2.3L dCi 163PS	6 Manual	4WD	21,654.17	4,330.83	25,985.00
	ACENTA	6 Manual		4WD	22,487.50	4,497.50	26,985.00	27,290.00
	ACENTA+	2.3L dCi 190PS	6 Manual	4WD	24,554.17	4,910.83	29,465.00	29,770.00
			7 Automatic	4WD	25,970.83	5,194.17	31,165.00	31,470.00
	N-CONNECTA		6 Manual	4WD	25,262.50	5,052.50	30,315.00	30,620.00
			7 Automatic	4WD	26,679.17	5,335.83	32,015.00	32,320.00
	TEKNA		6 Manual	4WD	26,862.50	5,372.50	32,235.00	32,540.00
			7 Automatic	4WD	28,279.17	5,655.83	33,935.00	34,240.00
	OFF-ROADER AT32		6 Manual	4WD	32,779.17	6,555.83	39,335.00	39,640.00
			7 Automatic	4WD	34,195.83	6,839.17	41,035.00	41,340.00

The Basic prices excludes VAT but includes delivery to the dealership and number plates. The Retail on the Road price includes VAT, delivery to the dealership, number plates, 12 months Government Vehicle Excise Duty (£250 for Light Commercial Vehicles) and Government First Registration Fee of £55. The CV On The Road price excludes VAT but includes delivery to the dealership, number plates, 12 months Government Vehicle Excise Duty (£230 for Light Commercial Vehicles) and Government First Registration Fee of £55.

DPF FILTER

WHAT IS A DPF?

A **DIESEL PARTICULATE FILTER (DPF)** forms part of the vehicle's exhaust in order to limit the amount of soot particles contained within the exhaust gas passing into the atmosphere. When the amount of soot in the filter reaches a specific level, this needs to be reduced in order to maintain the filter's function. This reduction is called **'REGENERATION'** and is carried out by the vehicle's electronic control system which raises the exhaust gas temperatures during normal driving. If a vehicle requires frequent regeneration due to driving style, these high temperatures cause the engine oil to degrade more quickly. However, from 2011 onwards Nissan vehicles were fitted with an **OIL CHANGE SUPERVISOR (OCS)** as well as a DPF to help monitor the condition of the oil and ensure the quality never falls below a minimum level.

WHAT IF I ONLY DRIVE SHORT JOURNEYS?

If the vehicle is only driven for short journeys, or at low speed, then it may not be possible for regeneration to occur. In this situation, the below warning lights will be illuminated on your dashboard.



Please refer to your Owner's Manual for further information.

After seeing these warning lights you need to drive, as soon as possible, above 40mph until the light goes out. This can take up to 30 minutes depending on the amount of soot collected in the filter.

WHAT IF I IGNORE THEM?

If you continue to drive at low speeds the exhaust gas temperatures cannot rise, so regeneration cannot occur. In this instance, a combination of the below warning lights will be illuminated on you dashboard.



In this case, and in order to protect the engine and DPF Filter, the vehicle will require **'SERVICE REGENERATION'** which can only be carried out by a workshop equipped with Nissan diagnostic equipment. You will need to go to your nearest Nissan dealer in case the oil and filter needs to be replaced.

As **'SERVICE REGENERATION'** is not a manufacturing fault, so the cost will **NOT** be covered under warranty.



# CO2 MASS EMISSIONS AND VEHICLE EXCISE DUTY

VEHICLE	ENGINE	TRANSMISSION	BODY STYLE	EMISSION LEVEL	CO <sub>2</sub> MASS EMISSIONS G/KM		12 MONTHS VED £	
					≤ 17" ALLOYS	≥ 18" ALLOYS	≤ 17" ALLOYS	≥ 18" ALLOYS
Navara	2.3L dCi Single Turbo 160PS	6 manual	2WD Pick-Up	EURO6	159	-	250	
		6 manual	4WD Pick-Up	EURO6	167	-	250	
	2.3L dCi Twin Turbo 190PS	6 manual		EURO6	-	167	250	
		7 auto		EURO6	-	183	250	

\* Determined by CO<sub>2</sub> emissions figure and fuel type - see "Further information". NB. Navara VED is fixed at £240 as it is considered a commercial vehicle.  
\*\* Juke, Pulsar, Qashqai and All figures are subject to final homologation.  
\*\*\* On New Qashqai CO<sub>2</sub> emissions are the same across the range irrespective of wheel size chosen

# NISSAN CARE WARRANTY

- Provides protection for up to 3 additional years on top of standard manufacturer’s warranty.
- Available for vehicles under 3 years old/60,000 miles from point of purchase.

+1YY UP TO 60,000 MILES		
MODEL	RETAIL PRICE EXCL VAT	FINAL RETAIL PRICE INCL VAT
MICRA	£206.00	£247.00
NOTE	£214.00	£257.00
JUKE	£223.00	£267.00
PULSAR	£239.00	£287.00
QASHQAI / JUKE NISMO	£248.00	£297.00
X-TRAIL	£381.00	£457.00
NAVARA	£456.00	£547.00
PATHFINDER	£464.00	£557.00
MURANO / 370Z	£531.00	£637.00
370Z NISMO	£648.00	£777.00
GTR R35	£3,531.00	£4,237.00
NV200 / M20	£389.00	£467.00
PRIMASTAR / X83	£473.00	£567.00
NV400 / X62	£589.00	£707.00
NT400 / F24	£764.00	£917.00

Prices above are for an additional 1 Year Nissan Care Warranty on top of the standard new car warranty. The warranty expires either 4 years or 60,000 miles from the date of vehicle registration, whichever comes first. Further age/mileage options are available.





# NISSAN INSURANCE

Nissan Insurance has been designed to help Nissan drivers get the most from their cover, boasting the following benefits:

- Use of Nissan Approved Repairers and franchised trained technicians
- Use of only Nissan genuine parts for repairs
- Guaranteed repair for 3 years
- New car replacement, if your vehicle is written off when under 12 months old
- Cover provided for driving in the EU, subject to a maximum 30 days per year
- Personal accident benefit up to £5,000
- Up to £100 personal belongings cover
- £300 towards replacement locks if your keys are lost or stolen

Call Nissan Insurance today on 0344 335 3780

Calls charged at the same rate as local 01 and 02 numbers and will be included in inclusive call packages from mobiles. Lines are open Monday to Friday 9am-7pm and Saturday 9am-5pm.

## Terms and Conditions

Quotations are subject to underwriting terms and acceptance criteria.

Nissan Insurance is arranged by Europa Group Ltd trading as Nissan Insurance Services on behalf of Maiden Global Holdings Ltd (registered in England with company number 07324422) Registered office: Albion House, Valley Business Centre, Gordon Road, High Wycombe, HP13 6EQ. Authorised and regulated by the Financial Conduct Authority. Financial Services Register number 555397. Europa Group Limited is authorised and regulated by the Financial Conduct Authority. Financial Services Register No. 309794. Registered as a limited company in England and Wales No. 3279177. Registered office: Europa House, Midland Way, Thornbury, Bristol BS35 2JX.

# FURTHER INFORMATION

**On The Road Prices.** On The Road Price includes 12 months Government Vehicle Excise Duty (VED) determined by CO<sub>2</sub> emissions figure and fuel type, £55 Government First Registration Fee, number plates and delivery to the Nissan Dealership.  
VED rates are determined by the vehicles CO<sub>2</sub> emissions figures and by the type of fuel used.  
The following table applies to all new car registrations:

VED Band														
	CO <sub>2</sub> Emissions Figure (g/km)*	0	1-50	51-75	76-90	91-100	101-110	111-130	131-150	151-170	171-190	191-225	226-255	over 255
Tax Year 2017 to 2018	First Year Rate	£0.00	£10.00	£25.00	£100.00	£120.00	£140.00	£160.00	£200.00	£500.00	£800.00	£1,200.00	£1,700.00	£2,000.00
	First Year Rate	£0.00	£10.00	£25.00	£105.00	£125.00	£145.00	£165.00	£205.00	£515.00	£830.00	£1,240.00	£1,760.00	£2,070.00
Tax Year 2018 to 2019	First Year Rate for Diesel Passenger Cars	£0.00	£25.00	£105.00	£125.00	£145.00	£165.00	£205.00	£515.00	£830.00	£1,240.00	£1,760.00	£2,070.00	£2,070.00

\* g/km = grammes of CO<sub>2</sub> per kilometre travelled.  
All Light Commercial Vehicles will have a standard VED rate of £240 per annum.

**VAT and VED**  
VAT application is based on current HMRC guidelines, please check with HMRC for specific guidance for the vehicle you are purchasing.  
VED is determined by the DVLA, please check with the DVLA for specific guidance for the vehicle you are purchasing.

**Optional equipment.** This price list features a selection from the full range of optional equipment, be they standard, dealer fit or factory options.  
For further information and details of the full range, please contact your local Authorised Nissan Dealer.

**Nissan's** commitment to you includes all of the following benefits – some of which may be the reasons why you chose your new Nissan in the first place:

**Manufacturer's warranty** – Nissan's comprehensive warranty provides cover for your new Nissan from defects in materials or workmanship. Your vehicle is covered in all European Countries where Authorised Nissan Dealers are located. If your vehicle becomes inoperative due to a warrantable defect a towing service, when necessary, to the Authorised Nissan Dealer is covered. If a warrantable defect abroad takes more than six hours to repair, the Touring Assistance Programme will pay for a hotel room or rental car up to a certain maximum. The paint warranty covers painted body parts (excluding the underbody) for three years regardless of mileage driven. For further details please contact your local Authorised Nissan Dealer. Petrol and diesel engine cars – Three-year/60,000 miles. Petrol and diesel engine LCVs and Navara – Five-year/100,000 miles.

**LEAF and e-NV200** – Nissan LEAF and e-NV200 offer a 5-year / 60,000 mile warranty on all EV dedicated components, including the lithium-ion battery, and a 3-year / 60,000 mile warranty on standard components. This is with the expression of e-NV200 which offers a 5-year / 60,000 mile warranty on mechanical components and corrosion\*. The Nissan LEAF and e-NV200 lithium-ion battery state of health guarantee protects against battery capacity loss (less than 9 bars out of 12) as shown on LEAF and e-NV200's capacity gauge for a period of 5 years / 60,000 miles. For LEAF and e-NV200 flex customers, the battery state of health guarantee applies for the duration of the battery lease.

\*The Basic Vehicle Warranty for e-NV200, according to 3.1 of the Warranty Booklet and Maintenance Record, is extended to 5 years (from the warranty start date) / 60,000 miles (whichever comes first). Only vehicles registered on or after 1st November2016 are eligible for the Extended Warranty. Body parts and paint excluded during year four and year five. Terms and exclusions apply, for further information please see Extended Warranty Terms and Conditions. Apart from the afore-mentioned, all warranty conditions included in the Warranty Booklet and Maintenance Record remain unchanged. Issuer of this Extended Warranty is Nissan International Insurance Ltd



# FURTHER INFORMATION

Nissan European Roadside Assistance is provided for the period of your new vehicle manufacturer warranty.

Roadside, Recovery and At Home products are provided by RAC Motoring Services (Registered No. 1424399, Registered Office: 8 Surrey Street, Norwich, NR1 3NG). RAC Motoring Services (in respect of insurance mediation activities only) is authorised and regulated by the Financial Conduct Authority and within the jurisdiction of the Financial Ombudsman Service and Financial Services Compensation Scheme.

Onward Travel and European Cover are underwritten by RAC Insurance Limited (Registered No. 1424399, Registered Office: 8 Surrey Street, Norwich, NR1 3NG). RAC Insurance Limited is authorised and regulated by the Financial Conduct Authority and within the jurisdiction of the Financial Ombudsman Service and Financial Services Compensation Scheme.

Nissan EV Pan-European Roadside Assistance is provided by AXA for 3 years or 60,000 miles, whichever comes first.

For LEAF and e-NV200 Flex (battery lease) customers, the Nissan EV Pan-European Roadside Assistance will cover you for the duration of your battery lease agreement should your Nissan EV run out of battery charge. For any other repair work, the basic warranty clause still applies. Benefits and Services are provided by AXA Assistance. AXA Assistance is authorised and regulated by the Financial Conduct Authority (FCA).

FCA Register number 439069. AXA Assistance UK Limited (registration 2638890) 106 - 118 Station Road, Redhill Surrey RH1 1PR

**Peace of mind** - we always guarantee our workmanship, and all genuine Nissan replacement parts and accessories have a minimum of one year's warranty. Accessory prices are subject to change, please see your nearest dealership for the most up to date prices. Our technicians have been trained by Nissan to work on your vehicle and they are the Nissan specialists. They use the latest equipment to ensure your vehicle is given the best treatment. Accessory prices are subject to change, please see your nearest dealership for the most up to date prices.

**Recyclability** - we take all our environmental responsibilities very seriously - innovation today comes with a deep respect for the environment. Our engines are now much more unobtrusive and their emissions have been considerably reduced. All our vehicles are designed with recycling in mind.

**Nissan Finance** offers a wide range of flexible finance schemes to meet the needs of both our retail and business customers. Preferences, Hire Purchase, Nissan Contract Hire and Finance Lease, all offer the in-built flexibility to make the package tailor-made to meet your individual needs. We also provide added security to your finance agreement with a comprehensive range of payment protection plans. Ask your local Authorised Nissan Dealer for details.

**The Nissan Motability Programme** developed in association with the registered charity Motability enables those with difficulty getting around to obtain selected models on preferential terms.

All prices in this list are quoted in pounds sterling. Value Added Tax (VAT) has been calculated at 20%.

While all reasonable effort has been made to ensure the accuracy of the information provided, due to Nissan's policy of continuous product improvement, all particulars Contained are subject to constant revision and Nissan reserves the right to change, alter or modify, among other things, specifications, colours and prices of models without notice at any time. Accordingly you should consult your local Authorised Nissan Dealer for the exact introduction dates of all models and for the most up-to-date information.

Images shown are for guidance purposes. In some instances photos are of non UK specification vehicles and do not represent a specific model, grade or offer.

OUR PROMISE. YOUR EXPERIENCE.



REQUEST A TEST DRIVE





There's no time limit on how long you will benefit from our promises. If you are a Nissan Customer, we will look after you. **That is our Promise.**



**FREE COURTESY CAR**

YOU want to stay on the road when your Nissan is in for a service or repair.

NISSAN PROMISE to keep you mobile free of charge whether you need a courtesy car, or just a lift



**FREE VIDEO HEALTH CHECK**

YOU want to understand what is going on with your car's service.

NISSAN PROMISE a free vehicle health check and we can even show you any work that might need doing with your own vehicle assessment ideo.



**SERVICE PRICE MATCH**

YOU want the best value for money when it comes to service and repair.

NISSAN PROMISE simple Fixed Price Servicing, and will price match like-for-like competitor written quotes within 10 miles of your local dealer.



**CONTINUOUS ROADSIDE ASSISTANCE**

YOU want the peace of mind you get from our quality service to go even further.

NISSAN PROMISE to provide you with Roadside Assistance for free every time you service your car with us.



**HERE FOR YOU**

YOU want your problems resolved quickly.

NISSAN PROMISE to propose a resolution to any problem within two working days.



**TEST DRIVE YOUR CHOICE**

YOU want to test drive the latest Nissan model, engine and gearbox you're interested in buying.

NISSAN PROMISE that's what you'll get when you pre-book your test drive either online or through our customer service centre.

**Just call 0330 123 1231.**

Please visit [nissan.co.uk/promise](http://nissan.co.uk/promise). Terms and conditions apply.





**NISSAN MOTOR (GB) LIMITED**

The Rivers Office Park  
Denham Way  
Maple Cross  
Rickmansworth  
Hertfordshire  
WD3 9YS  
Visit our website at: [www.nissan.co.uk](http://www.nissan.co.uk)  
Prices effective from 1st April 2018 unless otherwise stated  
**Version 2 - July 2018**

Dealer stamp:





**PURE VANS**

**Telephone - 01633-212944**

**Email - sales@purevans.com**

**www.purevans.com**