



Part of Pure Vans Ltd  
Independent Van Dealer



PART OF PURE VANS LTD  
INDEPENDENT VAN DEALER



**PURE** VANS

Telephone: 01633-212944  
Email: [sales@purevans.com](mailto:sales@purevans.com)

[www.purevans.com](http://www.purevans.com)

# Ford

TRANSIT COURIER



Go Further





Visionary. Ingenious. Remarkable.  
Every vehicle bears his signature.

*Henry Ford*







# Give your business the efficiency it deserves.

Efficient, nippy and easy to drive, the Ford Transit Courier combines outstanding CO<sub>2</sub> emissions and fuel economy with low running costs. Offering a choice between the award-winning 1.0 Ford EcoBoost petrol engine and the refined 1.5 Duratorq TDCi diesels, Transit Courier is an attractive proposition for your business.

And it's not just on the operating costs where Transit Courier excels. Its compact dimensions let you negotiate city streets with ease, but gives you an exceptional loadspace of up to 2.4 cu.m\* and a 663 kg (75PS diesel model) maximum payload gives you the confidence to handle larger jobs too.

1.5 Duratorq TDCi 95 PS diesel engine

96 g/km\*\* CO<sub>2</sub>

76.3 mpg\*\*



\*Measured in cubic metres in accordance with VDA: Motor Vehicle Dimensions.  
\*\*Ford test figures (combined cycle) with Auto-Start-Stop system and 62 mph Fixed Speed Limiter. See page 22 for fuel economy figures







# Everything you need to make your job easier.

Transit Courier is hugely accommodating – and not just for your cargo. In the cab you'll find comfortable seats, a fully-adjustable steering column and electrically-operated front windows<sup>2</sup>. Plus a host of thoughtful features to help make your working day easier.

## Features include

- Device Dock<sup>1</sup>, designed to store, mount and charge mobile devices, including smartphones and satnavs<sup>4</sup>
- DAB Radio<sup>1</sup> allows you to stream your music through the vehicle's speakers via Bluetooth® or using a USB cable
- Deep centre console, capable of storing A4 documents and small laptops
- Overhead stowage shelf<sup>2</sup>
- Reverse gear-activated rear-view camera<sup>3</sup>
- Underseat stowage drawer<sup>2</sup>

<sup>1</sup> Standard on Base series.

<sup>2</sup> Standard on Trend and Sport series.

<sup>3</sup> Option on Trend and Sport series.

<sup>4</sup> Device dimension limits apply

**Note** The Bluetooth® word mark and logos are owned by the Bluetooth SIG, Inc. and any use of such marks by Ford Motor Company Limited and its associated companies is under licence. Other trademarks and trade names are those of their respective owners.



## Generous space, easy access.

With up to 2.4 cu.m\* of transport capacity and a payload of between 577 and 663 kg, Transit Courier makes light work of almost any job. With the standard bulkhead fitted in the vehicle, the sliding side door opens to reveal an outstanding 453 mm aperture (601mm without bulkhead) allowing loads to be put in with ease.



## Clever thinking.

To make the most of its generous space, twin asymmetric rear cargo doors with an opening angle of up to 158 degrees are standard and allow unrestricted access to the load compartment. Side-mounted tie-downs help to keep the floor clear and make it easy to clean after the work is done.





# Loaded with smart ideas.

Transit Courier's 1620 mm load floor length offers plenty of room for cargo, toolboxes or equipment, while a folding mesh bulkhead with fold-and-dive passenger seat (part of an Option Pack on Base and Trend Van) lets you carry pipes, tubes or similar items up to 2.6 metres\*\* in length. Sidewall-mounted tie-downs (standard) keep the load floor free from obstructions, and an LED load compartment light (option on Van, not available on Kombi) helps loading and unloading after dark.

\*\*Extended length available for Vans, not Kombi.



## Bulkhead options

A range of full-height, full-width DIN- and ISO-compliant bulkheads (glazed or unglazed) are available, depending on bodystyle and series. An optional folding mesh bulkhead with fold-and-dive passenger seat is also offered for extra versatility (part of an Option Pack on Base and Trend on Van).

## Rear window protection grille

Grille fixes to inside of rear windows for enhanced security without obscuring rearward vision. Excludes Kombi. (Option and accessory).

## Cross bars and roof rails

Sturdy cross bars allow you to transport a range of loads safely and easily. Lockable crossbars (accessory) are only available in combination with roof rail – (option and accessory).

## ClimAir®+ wind deflectors

Reduces wind turbulence and noise, allowing you a more enjoyable drive with the front windows down, even during light rain and whilst on the move. (Accessory)

## Xvision+ Park Distance Control

An audible warning helps you to judge front and rear parking distances



## Mud flaps

Contoured mud flaps help to keep your Ford Transit Courier clean by reducing road spray and stone chips. Available as sets for front and rear. (Option and accessory)

## Brink®+ tow bars

For extra transport and stowage capability, the tow bar can tow up to 910 kg\* depending on engine. The tow bar can be detached if not in use. Also available as a fixed tow bar. (Accessory)

+Item covered by third party supplier's warranty, please see back cover for details.

\*Towing capacity depends on engine and vehicle series, please refer to vehicle weight and load specifications.

For more accessories for your Ford Transit Courier visit [www.ford-accessories.co.uk](http://www.ford-accessories.co.uk)

For a range of Ford branded items – from clothing to lifestyle products and model cars – visit [www.fordlifestylecollection.com](http://www.fordlifestylecollection.com)



# Transit Courier Kombi. More than just a people carrier.

Need to carry people as well as cargo? Then look no further than the versatile Transit Courier Kombi. With comfortable seating for up to five, it's easy to transport a crew and their tools or equipment. Once on site, fold the rear seats flat and you have a spacious and capable van, ready for even the toughest day's work.



Transit Courier Kombi's spacious interior means plenty of room for up to five occupants, as well as bags and equipment. When the split-fold rear seats are folded and tumbled forward, you have a huge 1.7 cu.m\* of hardworking space at your disposal.

\*Measured in cubic metres in accordance with VDA: Motor Vehicle Dimensions.







# Transit Courier series



## Base

### Key exterior features

- 15" steel wheels with centre caps
- Day running lights
- Ford Easy-Fuel capless refuelling system
- Remote central double deadlocking
- Asymmetric rear doors
- Full sized spare wheel
- Immobiliser
- Electronic Stability Control (ESC)

### Key interior features

- Rake and Reach adjustable steering column
- 4-way adjustable driver's seat
- Device Dock (Mobile Device not included)
- DAB Radio with Bluetooth® and USB connectivity
- Full unglazed bulkhead
- Deep centre console with two cup holders and A4 document stowage
- Driver's airbag
- Manual front windows
- Lidded glove box
- Load compartment lighting (Van only).

## A van that's built to last.

Designed and tested to Ford's stringent vehicle testing and durability standards, Transit Courier delivers reliable van toughness in a compact package.

### Features include

- Rigorous Ford testing programme, designed to simulate years of extreme use
- Tough, high-strength steel bodyshell
- Safety features including driver's airbag (standard), passenger's♦ airbag (option for Van and Standard on Kombi), Electronic Stability Control (ESC), Hill Start Assist, Traction Control System, Roll-Over Mitigation, Electronic Brake Assist, Emergency Brake Warning and Trailer Sway Control (standard)
- Extended 20,000 miles/1-year service intervals for lower maintenance costs
- Multi-piece rear bumper assembly helps to keep repair costs low
- 12-year perforation warranty

**Note** Side curtain and side thorax airbags are standard on Kombi models and are optional on Van. A knee protector airbag is also available as an option on Kombi models and is part of the lower fascia panel.  
**\*Note:** A rear-facing child seat should never be placed in the front passenger seat when the Ford vehicle is equipped with an operational front passenger's airbag.





# Transit Courier series.



## Trend

**Exterior features in addition to Base**

- 15" steel wheels with full wheel covers
- Front fog lights
- Body colour door mirror housings and door handles
- Single side load door
- Rain-sensing front wipers
- Automatic headlights
- Electrically-operated and heated door mirrors

**Interior features in addition to Base**

- Underseat stowage drawer
- Driver's seat with adjustable lumbar support and armrest
- Overhead stowage shelf
- Radio/DAB/CD with Ford SYNC and 3.5" dot-matrix display with USB connectivity and iPod® functionality
- Leather-trimmed steering wheel and gearshift knob
- Electrically-operated front windows with one-touch lowering on drivers side
- Fuel computer
- Bright-finish door release handles
- Lockable glovebox
- Courtesy lights with front map-reading lights
- 12 V auxiliary socket in load box

## Sport

**Exterior features in addition to Trend**

- 16" 7-spoke alloy wheels, with 'Magnetic Grey' painted finish
- Body colour front and rear bumpers
- Body colour bodyside mouldings
- Front and rear skid plates
- Sport rocker panels
- Sport stripes
- Electrically-operated and heated door mirrors with Sport 'Magnetic Grey' painted housings

**Interior features in addition to Trend**

- Manual air conditioning
- Leather-trimmed steering wheel with red stitching
- Charcoal Black seat inserts in Groove design with partial Torino leather
- Glovebox illumination





# Deep centre console.

Inside, Transit Courier boasts plenty of handy stowage, including the Deep centre console, which can hold A4-sized documents and smaller laptops. (Standard)



# Cruise control with Adjustable Speed Limiter.

Cruise control lets you set the pace, while the Adjustable Speed Limiter allows you to set a maximum speed to avoid inadvertently exceeding the speed limit. (Option, not available on Sport.)



# Ford SYNC with AppLink\*

The next generation of in-car connectivity, Ford SYNC lets you operate most popular Bluetooth®-enabled phones, USB drives and control the apps on your smartphone with remarkably simple voice commands. It can even read your text messages aloud\*\*. And, in the event of an accident, the Ford Emergency Assistance\* feature can assist you to contact the emergency services. (Standard on Trend and Sport). Navigation is fitted as an optional extra.



\*Compatible mobile phone required. You can browse a list of AppLink-compatible a on [ford.co.uk](http://ford.co.uk), or via the Ford App Catalog available in iOS and Android stores. Ford Emergency Assistance is an innovative SYNC feature that uses a Bluetooth®-paired and connected mobile phone to help vehicle occupants initiate a direct call to the local Communications Centre, following a vehicle crash event involving an airbag deployment or fuel pump shut off. The feature operates in more than 40 European countries and regions.  
\*No subscription required.  
\*\*Text messaging feature available in selected countries. See [ford.co.uk](http://ford.co.uk) for latest information.



# Ford Easy-Fuel capless refuelling system.

A unique safeguard to ensure nobody can accidentally fill up with the wrong fuel. Plus, no dirty fuel caps to touch. (Standard)

# Device Dock.

Located just above the instrument panel, Device Dock is designed to hold your smartphone, MP3 player or navigation device. Stream your music through the car's speakers via Bluetooth® or using a USB cable connected to the DAB Radio. The lidded compartment provides covered storage for your device and contains a charge-only USB socket. (Standard on Base only, not available with optional ICE packs. Mobile Device not included)

**Note** The Bluetooth® word mark and logos are owned by the Bluetooth SIG, Inc. and any use of such marks by Ford Motor Company Limited and its associated companies is under licence. Other trademarks and trade names are those of their respective owners.



# Underseat stowage drawer.

A handy stowage drawer beneath the front seat is large enough to hold an A4 clipboard, tablet or a laptop computer. (Option on Base, Standard on Trend and Sport)





Safe and secure

Across the Ford Transit Courier range, a full line-up of features makes use of the latest technology to help protect you, your passengers and your cargo.

- 1. Driver's (standard) and front passenger's• airbags (standard on Kombi)
- 2. Driver's and front passenger's• side impact airbags (option on Van, standard on Kombi)
- 3. Side curtain airbags (standard on Kombi)
- 4. Knee protector airbag (option on Kombi)
- 5. DIN- and ISO-compliant side-mounted tie-down points to secure cargo (standard)
- 6. Speed Limiter (option)
- 7. Electronic Stability Control and associated features (standard on all models, see right)
- 8. Remote central locking (standard on all models)
- 9. Engine immobiliser (standard on all models)
- 10. Perimeter or Thatcham Cat 1 alarms (options)

**\*Note: A rear-facing child seat should never be placed in the front passenger seat when the Ford vehicle is equipped with an operational front passenger's airbag.**

Electronic Stability Control (ESC)

Hill Start Assist

Designed to temporarily prevent you from rolling down a slope when you move your foot from the brake pedal to the accelerator pedal. It works in forward and reverse gears, so is ideal for towing and pulling heavy loads. (Standard)

Emergency Brake Assist

Designed to recognise an emergency braking situation and increase the pressure within the braking system to ensure maximum stopping power is used. (Standard)

Emergency Brake Warning

Front and rear indicators automatically flash during heavy braking, giving other drivers advance hazard warning. (Standard)

Traction Control

If wheel slip is detected at low speed, this system can distribute more torque to the wheel with most traction. (Standard)

Roll Stability Control

Designed to identify a potentially dangerous driving situation and activate the ESC to restore stability. (Standard)

Trailer Sway Control†

When the system recognises that a towed trailer is starting to sway, it reduces engine torque and applies the brakes to lower the speed and help regain stability. †Compatible with Ford towbar



Tyre Pressure Monitoring

Allows you to monitor tyre pressure while on the move. System alerts you if it detects that a tyre's pressure is too low, such as in the case of a puncture. (Standard on Kombi, option on other Van series)

Get the most from your new Ford

We want to help you get the most from your new Ford. And to do that, you need to know how much it is designed to safely carry, both in terms of payload and load volume. Your Transit Centre can provide professional advice on important specification aspects, and help to find the right van for your budget and business needs.

The new Ford Transit Courier is designed to carry cargo – and lots of it.

Choosing a new van is an important decision with lots of factors to be considered. While some aspects, like selecting the most appropriate derivative, identifying the intended primary use and determining load box size are relatively simple, others, such as calculating payload are more complex.

Payload capacity

To calculate payload, you need to know two things: the vehicle's gross vehicle mass (GVM) and its kerb mass.

**Payload = Gross vehicle mass minus kerb mass**

Gross Vehicle Mass (GVM)

GVM is the maximum permissible weight of the vehicle when loaded and ready to go – that includes the weight of the vehicle itself, ancillaries, driver and crew (assuming the industry standard weight of 75 kg/person), fluids, fuel tank 90% full (1 litre of diesel = approximately 0.85 kg), optional and aftermarket equipment, and cargo.

Kerb Mass

Kerb mass is the weight of a standard-specification Base series vehicle, including fluids and fuel tank 90% full, but without the driver, crew or cargo. If you intend to load the vehicle close to its maximum capacity, it is recommended that you add a margin for error of 5% of the GVM to the kerb mass figure before calculating payload, to reduce the risk of overloading.

Gross Train Mass (GTM)

Gross train mass is the total permissible all-up weight of a vehicle, together with its trailer and load.

So to help you choose the right vehicle for your needs, here are some more detailed explanations about the factors that can influence a vehicle's payload. These include, but are not limited to:

If payload is critical to your business, or if you plan to carry cargo at, or close to, the vehicle's maximum capacity, your Transit Centre can help. Using their specialist expertise and knowledge, they can advise you on the exact specification of vehicle required to meet your individual business needs.

Note: Technical information for vehicle converters can be found online via the Body and Equipment Mounting Manual at [www.etis.ford.com](http://www.etis.ford.com) ; go to >information >>vehicle conversions.

Configure your van to suit your job

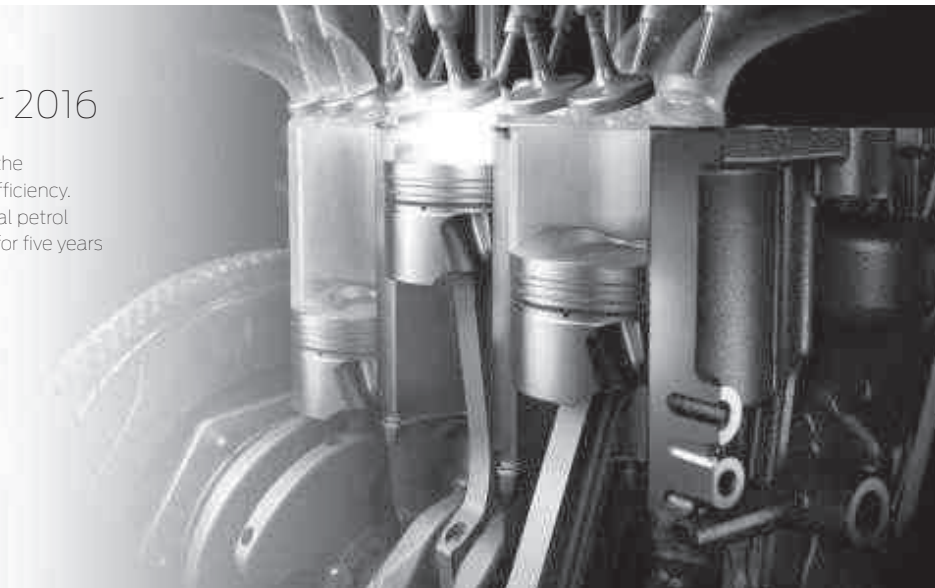
Ford Commercial Vehicles are available with a wide range of standard and optional features. Your Ford Transit Centre can help you ensure that you specify the right vehicle features for your specific business needs, including technical items to aid aftermarket fitment of specialist equipment or conversion.

Model availability

	Base	Trend	Sport	Kombi
Ford Transit Courier				
1.0 EcoBoost (100 PS (75 kW))	●	●	●	-
1.5 Duratorq TDCi (75 PS (56 kW))	●	●	-	●
1.5 Duratorq TDCi (95 PS (71 kW))	-	●	●	-
● = Standard, ○ = Option, at extra cost. <b>Note</b> all diesel engines are fitted with a standard vDPF (vapouriser Diesel Particulate Filter).				

Ford EcoBoost. Sub 1-litre  
International Engine of the Year 2016

The diamond-like coating on the piston rings reduces friction; the turbocharger, direct injection and variable valve timing boost efficiency. The result is remarkable performance from such an economical petrol engine. Winner at the International Engine of the Year Awards for five years running, the 1.0-litre Ford EcoBoost develops 100 PS of power.





Weights, Loads, Fuel Consumption

The fuel economy figures quoted in the table below are achieved by following strict EU governed test procedures and are specifically designed to enable customers to compare vehicles from all manufacturers on a like-for-like basis. Fuel consumption is directly affected by the length of the journey; number of passengers and amount of luggage carried; individual driving style; road and traffic conditions; weather conditions; vehicle age, mileage, condition and standard of maintenance; use of vehicle features such as air conditioning; and any modifications to the vehicle such as the addition of a roof rack. Your fuel economy will vary based on these and other factors and, for these reasons, many drivers may not achieve the EU fuel economy figures (below) in day-to-day driving, although the vehicle is technically capable of doing so.

										Fuel consumption in mpg (L/100 km) <sup>9)</sup>		
	Euro Stage	Gross payload <sup>8)</sup>	Gross vehicle mass (kg)	Kerb mass (kg) <sup>*</sup>	Front axle kerb mass (kg)	Rear axle kerb mass (kg)	Axle ratio	Max. GTM (kg) with quoted axle ratio <sup>*</sup>	CO <sub>2</sub> emissions (g/km) <sup>10)</sup>	Urban	Extra Urban	Combined
Transit Courier												
1.0 EcoBoost (100 PS (75 kW))	Stage VI	650	1765	1115	689	426	4.06	2675	120	42.2 (6.7)	61.4 (4.6)	53.3 (5.3)
1.0 EcoBoost (100 PS (75 kW)) with optional Auto Start-Stop	Stage VI	650	1765	1115	689	426	4.06	2675	115	46.3 (6.1)	61.4 (4.6)	55.4 (5.1)
1.5 Duratorq TDCi (75 PS (56 kW))	Stage VI	663	1795	1132	702	430	3.37	2295	104	60.1 (4.7)	78.5 (3.6)	70.6 (4.0)
1.5 Duratorq TDCi (75 PS (56 kW)) with optional Auto Start-Stop	Stage VI	663	1795	1132	702	430	3.37	2295	99	64.2 (4.4)	80.7 (3.5)	74.3 (3.8)
1.5 Duratorq TDCi (95 PS (71 kW))	Stage VI	661	1795	1134	704	430	3.37	2295	104	60.1 (4.7)	78.5 (3.6)	70.6 (4.0)
1.5 Duratorq TDCi (95 PS (71 kW)) with optional Auto Start-Stop	Stage VI	661	1795	1134	704	430	3.37	2295	99	64.2 (4.4)	80.7 (3.5)	74.3 (3.8)
1.5 Duratorq TDCi (95 PS (71 kW)) with optional Auto Start-Stop and 62 mph fixed speed limiter	Stage VI	661	1795	1134	704	430	3.37	2295	96	64.2 (4.4)	83.1 (3.4)	76.3 (3.7)
Transit Courier Kombi												
1.5 Duratorq TDCi (75 PS (56 kW))	Stage VI	577	1780	1203	707	496	3.37	2280	104	60.1 (4.7)	78.5 (3.6)	70.6 (4.0)
1.5 Duratorq TDCi (75 PS (56 kW)) with optional Auto Start-Stop	Stage VI	577	1780	1203	707	496	3.37	2280	99	64.2 (4.4)	80.7 (3.5)	74.3 (3.8)

<sup>a</sup>Payload = Gross vehicle mass, less kerb mass. All kerb masses quoted in this brochure are subject to manufacturing tolerances and are for Base models with minimum equipment, rear tailgate and without spare wheel. Trend and Commercial Kombi models will have greater kerb masses and, therefore, lower payloads due to the increased amount of standard equipment. Any additional options specified on the vehicle will reduce the payload accordingly. <sup>\*</sup>Represents the lightest kerbweight assuming full fluid levels and 90% fuel levels, but without driver, crew, cargo or options. <sup>a</sup>The declared fuel consumptions and CO<sub>2</sub> emissions are measured according to the technical requirements and specifications of European Directive 80/1268/EEC or the European Regulation (EC) 715/2007 amended by (EC) 692/2008. Fuel consumption and CO<sub>2</sub> emissions are specified for a vehicle type and not an individual. The applied standard test procedure enables to compare between different vehicle types and different manufacturers. This information is not part of any product offer made. Real world fuel consumption can vary as the fuel efficiency of a vehicle is influenced by (individual) configurations, driving behaviour, use of technical equipment such as air conditioning, as well as other non-technical factors. \* Max Trailer Weight will need to be reduced if maximum payload is achieved so as not to exceed GTM.

Engine Data

	Engine technical features	Maximum power <sup>a</sup>	Maximum torque <sup>a</sup>
1.0 Ford EcoBoost (100 PS (75 kW))	3 cylinders in line, SOHC, 12 valves, alloy cylinder head, direct injection with high-pressure, common rail multipoint fuel injection system, turbocharger with intercooler	100 PS	170 Nm
1.5 Duratorq TDCi (75 PS (56 kW))	4 cylinders in line, SOHC, 8 valves, aluminum cylinder block with open deck, direct injection via solenoid injectors, common rail 3rd generation fuel injection system, fixed geometry turbocharger, electronic EGR	75 PS	190 Nm
1.5 Duratorq TDCi (95 PS (71 kW))	4 cylinders in line, SOHC, 8 valves, alloy cylinder head, direct injection with high-pressure, common rail multipoint fuel injection system, turbocharger with intercooler, electronic EGR	95 PS	215 Nm

<sup>a</sup>Tested in accordance with ISO 1585. **Note** all diesel engines are fitted with a standard vDPF (vaporiser Diesel Particulate Filter).

Exterior features

	Base	Trend	Sport	Kombi
Exterior appearance and styling				
Front bumper – Self colour	●	●	–	●
Front bumper – Body colour	–	–	●	–
Rear bumper – Self colour	●	●	–	●
Front bumper with skid plate – Body colour	–	–	●	–
Rear bumper with skid plate – Body colour	–	–	●	–
Bodyside moulding – Self colour	●	●	–	●
Bodyside moulding – Body colour	–	–	●	–
Sport Stripes – Red on Shadow Black & Magnetic, Black on Frozen White, Deep Impact Blue and Race Red	–	–	●	–
Sport rocker panels	–	–	●	–
Door handles – Self colour	●	–	–	●
Door handles – Body colour	–	●	●	–
Grille – Self colour	●	●	●	●
Mudflaps – Front and rear	○	○	–	○
Headlight bezel – Black	●	–	●	●
Headlight bezel – Bright	–	●	–	–
Roof rails	○	○	–	○
Roof rails – Sport "Magnetic Grey" painted	–	–	○	–
Side load door track cover	○	○	●	○

Exterior features

	Base	Trend	Sport	Kombi
Exterior functional				
Doors – Single side load	○	●	●	–
Doors – Dual side load	○	○	○	●
Doors – Dual side load door half glazed (second row opening windows, rear door glazed)	–	–	–	●
Doors – Rear liftgate (glazed with wash/wipe)	○	○	○	○
Doors – Rear cargo	●	●	●	●
Rear cargo door glazing includes heated rear screen and rear wiper	○	○	○	●
Rear window protection grille (cargo doors only)	○	○	○	–
Mirrors – Self colour housing, manually controlled	●	–	–	●
Mirrors – Self colour housing, electrically operated and heated	○	○	–	○
Mirrors – Body colour housing, electrically operated and heated	–	●	–	–
Mirrors – Black painted, electrically operated and heated	–	–	●	–
Rain-sensing wipers including automatic headlights and auto-dimming rear view mirror	○	●	●	○
Wipers – Standard 2 speed, variable intermittent	●	–	–	●
Quickclear heated windscreen including heated washer jets	○	○	○	○
Parking distance sensors – Rear (only available with SYNC) (includes rear mudflaps)	○	○/□	○	○
Rear-view camera (Available in ICE Pack 59 and ICE Pack 66)	–	□	□	–
Glass – Tinted	●	●	●	●
Wheels				
Steel – 15"x6" wheel (fitted with 195/60/ tyres*)	●	●	–	●
Black hub Cover	●	–	–	●
Full wheel cover	–	●	–	–
Alloy – 15"x6" 5-spoke (fitted with 195/60 tyres*) with locking wheel nuts	–	○	–	–
Alloy – 16"x6.5", 5-spoke "Magnetic Grey" painted finish (fitted with 195/55/R16 tyres*) with locking wheel nuts	–	–	●	–
Spare – Full size wheel	●	●	●	●
Exterior lighting				
Headlights – Day running lights	●	●	●	●
Headlights – Twin chamber halogen headlights	●	●	●	●
Headlights – Automatic on /off	□	●	●	□
Headlights – Courtesy delay	●	●	●	●
Front fog lights	–	●	●	–
Centre mounted brake light	●	●	●	●

● = Standard, ○ = Option, at extra cost, □ = Part of an option pack, at extra cost. \*The wheel you choose will be fitted with the tyre size noted, but no choice of tyre brand is available.

Option packs

	Base	Trend	Sport	Kombi
Option packs				
Comfort Pack – Manual air conditioning, leather-trimmed steering wheel, cruise control, and rear parking sensors	–	○	–	–

● = Standard, ○ = Option, at extra cost, □ = Part of an option pack, at extra cost. \*The wheel you choose will be fitted with the tyre size noted, but no choice of tyre brand is available.

Chassis features

	Base	Trend	Sport	Kombi
Brakes				
Brake system – Smart regenerative charging	●	●	●	●
Brakes – Front disc, rear drum	●	●	●	●
Steering				
Electric Power Assisted Steering (EPAS)	●	●	●	●
Technology				
Assist Direct Start (Engine Start-Stop function)	○	○	○	○
Ford Eco Mode (Driver Information System; included with SYNC Audio systems)	□	●	●	□
Engine Governors				
Speed Limiter – 56 mph (90 km/h)	○	○	○	○
Speed Limiter – 62 mph (100 km/h)	○	○	○	○
Speed Limiter – 70 mph (112 km/h)	○	○	○	○
Battery – standard duty	●	●	●	●
Battery – improved flooded	○/□	○/□	○/□	○/□

● = Standard, ○ = Option, □ = Option as part of Pack.

Allergy-friendly interior

Transit Courier's interior uses materials that minimise the risk of an allergic reaction. A high-performance pollen filter helps prevent dust and pollen entering the passenger compartment. (Standard)



Interior features

	Base	Trend	Sport	Kombi
Audio and communication systems				
Audio – pre-equipment pack	○	–	–	○
Connection Radio with DAB, USB, Bluetooth® hands-free phone (2 speakers) ICE pack 15	●	–	–	●
Radio/CD with 3.5" dot matrix display, 4 speakers (front), USB connectivity and iPod® functionality, Ford SYNC, Bluetooth® hands-free phone (with Voice Control System), Ford Eco Mode. (ICE pack 13)	○	●	●	○
Radio/DAB/CD, 5" TFT screen with navigation, USB connectivity and iPod® functionality, 4 speakers (front) Ford SYNC, Bluetooth® hands-free phone (with Voice Control System) Ford Eco Mode and Manual air con with manual recirculation facility and automatic rain sensor. (ICE Pack 37)	○	○	–	○
Radio/DAB/CD, 5" TFT screen with navigation, USB connectivity and iPod functionality, 4 speakers (front) Ford SYNC, Bluetooth® hands-free phone (with Voice Control System) Ford Eco Mode, Rear View Camera and Manual air conditioning+ rear view camera. (ICE Pack 59)	–	○	○	–
Radio/DAB/CD, 5" TFT screen with navigation, USB connectivity and iPod functionality, 4 speakers (front) Ford SYNC, Bluetooth® hands-free phone (with Voice Control System) Ford Eco Mode, rear view camera and Electronic Automatic Temperature Control (EATC). (ICE Pack 66)	–	○	○	–
MyFord Dock included with Connection Radio audio system	●	–	–	●
Carpet and Trim				
Carpet – Front, with driver's side heel protection	–	–	–	●
Rubber Lining – Front	●	●	●	–
Rubber Lining – Rear cargo area	○	○	○	●
Interior lighting				
Glovebox illumination	–	–	●	●
Lights – Load compartment	●	●	●	–
Lights – Load compartment with LED	○	○	○	–
Lights – Battery saver (30 minutes duration)	●	●	●	●
Courtesy lights – Front without map reading lights	●	–	–	●
Courtesy lights – Front with map reading lights	–	●	●	–
Instruments and controls				
Steering wheel – 3 spoke PU	●	–	–	●
Steering wheel – 3 spoke leather trimmed with radio controls	○ / □	●	–	○ / □
Steering wheel – Sport 3-spoke leather with red stitching	–	–	●	–
Tachometer	●	●	●	●
Fuel computer	–	●	●	○ / □
Rake- and-reach adjustable steering column	●	●	●	●
Screen mounted rear-view mirror (not available with solid bulkhead and with unglazed rear doors)	● /–	–	–	●
Auto dimming rear-view mirror (not available with solid bulkhead and with unglazed rear doors)	□ /–	● /–	● /–	□
Comfort and convenience				
Door handles – Black	●	–	–	●
Door handles – Bright finish	–	●	●	–
Front passenger folding grab handle (optional on Base Van as part of overhead stowage)	–	–	–	●
Gearshift knob – Soft feel with black insert	●	–	–	●
Gearshift knob – Leather	□	●	–	□
Gearshift Knob – Leather gear shift with red stitching on gaiter	–	–	●	–
Locking glovebox	–	●	●	–
Centre console with 2 cupholders and A4 size stowage	●	●	●	●
Overhead stowage	○ / □	●	●	○ / □
Cruise control – switches on steering wheel (3 spoke leather steering wheel included on Base)	○	○	–	–
Cruise control and ASLD (Adjustable Speed Limiting Device) (3 spoke leather steering wheel included on Base)	○	○	–	○
Heater – Electrical Supplementary (PTC)	○	○	○	●
Air conditioning – Manual control	○ / □	○ / □	●	○
Air conditioning – Electronic Automatic Temperature Control (EATC)	–	○ / □	○ / □	○
Recirculation heater	●	●	●	●
Pollen filter	●	●	●	●
Windows – Front manual adjust	●	–	–	–
Windows – Front electrically-operated with one-touch lowering on driver's side	○	●	●	●
Windows – Front electrically-operated with one-touch up and down on driver and passenger side	–	○	○	–
Rear-view camera (available with colour 5" TFT touch screen)	–	□	□	–
Smoker's Pack (contains ashtray and cigarette lighter)	○	○	○	○
Loadspace compartment				
No bulkhead	–	–	–	●
Bulkhead – Moulded Unglazed (where no side load door is fitted)	●	–	–	–
Bulkhead – Full Steel Unglazed (where a side load door is fitted on Base series)	●	●	●	–
Bulkhead – Full Steel Glazed	○	○	○	–
Folding Mesh Bulkhead with fold/dive passenger seat	□	□	–	–
12 V power point in loadspace	–	●	●	–
Cargo tie-downs (6 x DIN 75410 compliant)	●	●	●	–
Cargo tie-downs (4 x DIN 75410 compliant)	–	–	–	●
Cargo Net (only with rear liftgate)	–	–	–	○

● = Standard, ○ = Option, at extra cost, □ = Part of an option pack, at extra cost.  
The Bluetooth® word mark and logos are owned by the Bluetooth SIG, Inc. and any use of such marks by Ford Motor Company is under licence. Other trademarks and trade names are those of their respective owners. \*\*Ford Emergency Assistance is an innovative SYNC feature that uses a Bluetooth® - paired and connected mobile phone to help vehicle occupants initiate a direct call to the local Communications Centre, following a vehicle crash event involving an airbag deployment or fuel pump shut off. The feature operates in more than 40 European countries and regions. Emergency Assistance is not supported by all European languages. See [www.ford.co.uk](http://www.ford.co.uk) for latest information.

Seats

	Base	Trend	Sport	Kombi
Seats and seat belts				
Driver's seat – fore/aft adjustable	●	–	–	●
Driver's seat – fore/aft and height adjustable, with lumbar control and armrest	○	●	●	–
Driver's seat – Armrest	○	●	●	–
Passenger seat – fore/aft adjustable	●	●	●	●
Passenger seat Fold/dive (not available with seat back tray and heated seats)	□	□	–	–
Underseat stowage drawer	□	●	●	–
Front seats – Heated seat back and base	–	□	□	–
2-way headrests second row (on outboard seats)	–	–	–	●
Rear seat – Fold and tumble 60/40split (all fixed)	–	–	–	●

● = Standard, ○ = Option, at extra cost, □ = Part of an option pack, at extra cost.

Safety and Security

	Base	Trend	Sport	Kombi
Safety and driver assistance				
Anti-lock brakes – Electronic, 4-wheel <sup>1)</sup>	●	●	●	●
Electronic Stability Control (ESC) – includes Hill Start Assist, Roll-Over Mitigation, and Electronic Brake-force Distribution (EBD) <sup>1)</sup>	●	●	●	●
Emergency Brake Assistance <sup>1)</sup>	●	●	●	●
Emergency Brake Warning <sup>2)</sup>	●	●	●	●
Trailer Sway Control <sup>1)</sup> (with Ford towbar)	●	●	●	●
Airbag – Driver front single stage <sup>1)</sup>	●	●	●	●
Airbag – Passenger front single stage <sup>1)</sup> (includes passenger deactivation switch) <sup>*</sup>	○	○	○	●
Driver and passenger side airbag <sup>1)</sup> (passenger side airbag not fitted in combination with folding mesh bulkhead)	□	□	□	●
Driver's knee airbag <sup>1)</sup>	–	–	–	○
Airbag curtain restraint <sup>1)</sup>	–	–	–	□
Beltminder – Driver seat <sup>2)</sup>	●	●	●	●
Beltminder – Driver and passenger seat <sup>2)</sup>	□	□	□	●
Tyre pressure monitoring system (TPMS) <sup>1)</sup>	○	○	○	●
ISOFIX Childseat fixings for rear outboard seats <sup>1)</sup>	–	–	–	●
3-point seat belts <sup>1)</sup>	●	●	●	●
Security				
Central double deadlocking	●	●	●	●
Side-load door child locks	●	●	●	●
Remote central locking – One Lollipop Key and one Plain Key	●	–	–	●
Remote central locking – One Flip Key and one Lollipop Key	○	●	●	○
Perimeter alarm	○	○	○	○
Thatcham category 1 alarm (not available with rear glazing on Van)	○	○	○	○
Engine immobiliser	●	●	●	●

● = Standard, ○ = Option, at extra cost, □ = Part of an option pack, at extra cost. <sup>1)</sup>Safety feature, <sup>2)</sup>Driver assistance feature.  
**\*Note: A rear-facing child seat should never be placed in the front passenger's seat when the Ford vehicle is equipped with a front passenger or side airbags.**

Tested to extremes

From frost-covered prototypes started up in -40°C at 4,500-metre altitudes, to sun-baked vehicles towing fully-laden trailers up long inclines in 50°C heat, Transit Courier has been pushed to extremes.





# Making life easy

Our range of finance, service and assistance options is designed with just one thing in mind – making life easy for you.

### Ford Transit24

At Ford we recognise the importance of minimising downtime, inconvenience and expense – that’s why we provide first-class aftersales support.

When it comes to the service, maintenance and repair of your Ford commercial vehicles, look no further than your nearest Transit Centre. Dedicated to looking after your vehicle, Transit Centres offer specialised workshop equipment, tools and training, and can look after all your service, maintenance and warranty work.

### Convenient servicing

**While-you-wait servicing** Your commercial vehicle can be serviced when it suits you. Late night service appointments are available at least once a week and we respond to 1link online service booking requests within twenty minutes.

**Collection and delivery** This can be arranged at the time of your service booking for locations within a reasonable travelling time. So that it looks its best, your vehicle will be washed.

**Fleet National Pricing** Maximum recommended pricing for fleets with over 25 vehicles ensures you get the best price for routine services and fixed- content job.

**MOTs and more** Transit Centres can handle MOTs (including Class 5 and 7 tests), tachograph servicing and speed limiting (VOSA approved).

### Other benefits

**Ford parts availability** Ford will endeavour to ensure any parts required will either be in stock or delivered anywhere on the UK mainland by 9am the next working day.

**Genuine Ford parts quality** All parts are designed and engineered by Ford, to Ford standards. Parts fitted to a vehicle outside of warranty carry a ‘fitted in service’ parts warranty.

**Ford diagnostics** For speedy and accurate fault diagnosis, we provide a sophisticated, internet- linked vehicle diagnostics system.

**Ford trained technicians** Ford commercial vehicle dealers have Ford-trained technicians, supported by online technical information and a Ford technical hotline.

**Unscheduled repairs** When your commercial vehicles aren’t working, neither are your drivers. Our priority is to get your vehicle back on the road as quickly and as efficiently as possible.

**Priority treatment for urgent repairs** Initial diagnosis on urgent (vehicle off-road) repairs is carried out on arrival, with parts ordered within two hours of arrival – especially helpful when a replacement vehicle won’t do. We aim to complete most repairs the same working day.

### Dedicated backup from Ford

**Ford Fleet Electronic Recall Programme** This simplifies the process of recalls and improves communications with the operators of affected vehicles.

**Ford Fleet Service Centre** A dedicated team of experienced service advisors to assist with your aftersales issues.

**Ford Fleet Accident Management** Whatever the make of the vehicle, we offer a free, ethical and comprehensive accident management programme.

**Efficiency, accuracy and convenience are at the heart of the Ford Transit24 commercial vehicle service promise. So, whether it’s servicing, maintenance or repair you need, be sure to come and see us.** For more information and to find your nearest Transit Service Dealer, visit the aftersales support section at [www.ford.co.uk/fordfleet](http://www.ford.co.uk/fordfleet)

### Commercial Vehicle Finance

When it comes to financing your Ford Commercial Vehicle, our size and expertise means we’re well placed to provide you with a wide range of finance products.

**Ford Credit\***: Provides a range of finance plans for Commercial Vehicle customers interested in owning their vehicle.

**Ford Lease^**: Specialises in contract hire and leasing and provides an alternative range of finance plans which can be tailored to suit your business. Business users only.

Important Information:

\*Ford Credit: Finance subject to status. Guarantees may be required. Freepost Ford Credit. Ford Credit is a trading style of FCE Bank plc. which is authorised by the Prudential Regulation Authority and regulated by the Financial Conduct Authority and Prudential Regulation Authority under firm reference number 204469. ^Ford Lease: Ford Lease is provided by ALD Automotive Ltd, trading as Ford Lease, BS16 3JA. ALD Automotive is registered in England No. 987418. For the purposes of the Data Protection Act 1998 the data controllers in relation to any information you supply are Ford Motor Company Limited, FCE Bank Plc and ALD Automotive. Finance subject to status. Guarantees and indemnities may be required. ALD Automotive is authorised and regulated by the Financial Conduct Authority in respect of general insurance products. Ford Lease is a registered trademark of Ford Motor Company Limited.

### Services

To find the location of your nearest Transit Centre simply visit the Ford Dealer locator at [www.fordvans.co.uk](http://www.fordvans.co.uk)

**Ford Warranty** Every new Ford Fiesta Van and Ford Ranger is protected by a 3-year/ 60,000 mile\* warranty®.

Ford Transit, Transit/Tourneo Custom, Transit/Tourneo Connect and Transit Courier are protected by a 3-year/100,000 mile warranty® .

Ford Transit Chassis Cab One-Stop bodywork is covered by a 3-year/ 100,000 mile warranty® and a 3-year Perforation Warranty provided by the bodywork supplier.

**Ford Perforation Warranty** Ford Ranger, Transit, Transit/Tourneo Custom, Transit/Tourneo Connect, Transit Courier and Fiesta Van are covered by the Ford Perforation Warranty® for 12 years from the date of first registration. Please see your Ford Transit Specialist Dealer for details.

**Ford Assistance** Ford Transit, Transit Custom, Transit Connect and Ranger are supplied with a minimum of a 1-year Ford Assistance roadside package. Further details are available either on [www.ford.co.uk](http://www.ford.co.uk) or from your local Ford Dealer.

**Ford Accident Repair Centres** Approved Ford Accident Repair Centres meet rigorous Ford standards and are the best place to return your vehicle to its pre-accident condition.

### Contacts

**Ford Customer Relationship Centre** In the unlikely event that your Ford Dealer can’t help you or if you need to speak to us directly, call 0203 564 4444 at local rates.

**Ford Rental** – local service nationwide Car and Van rental from our latest model range. Contact your local Ford Dealer for more information.

**Ford Motability** Call our Ford Motability team on 0345 6040019

\* year 1 - unlimited mileage

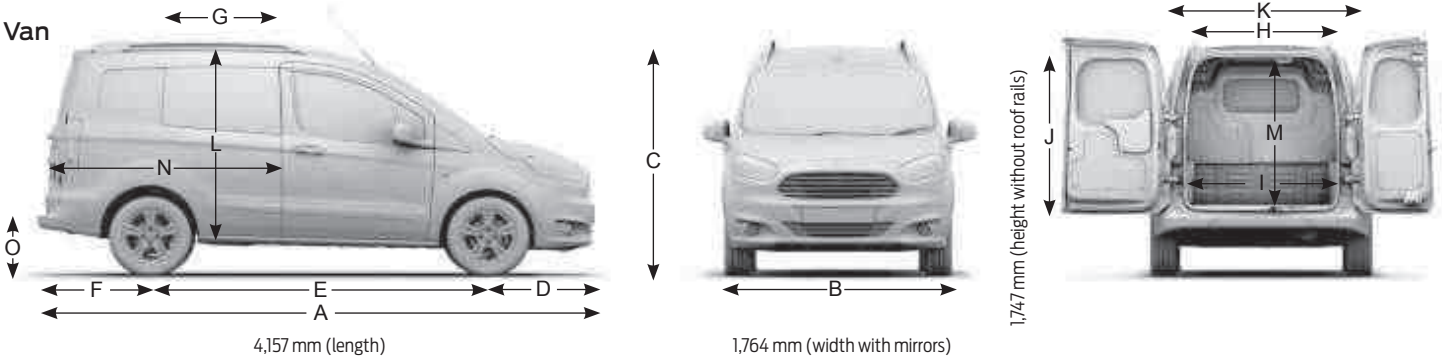
^ Subject to terms and conditions

## Dimensions

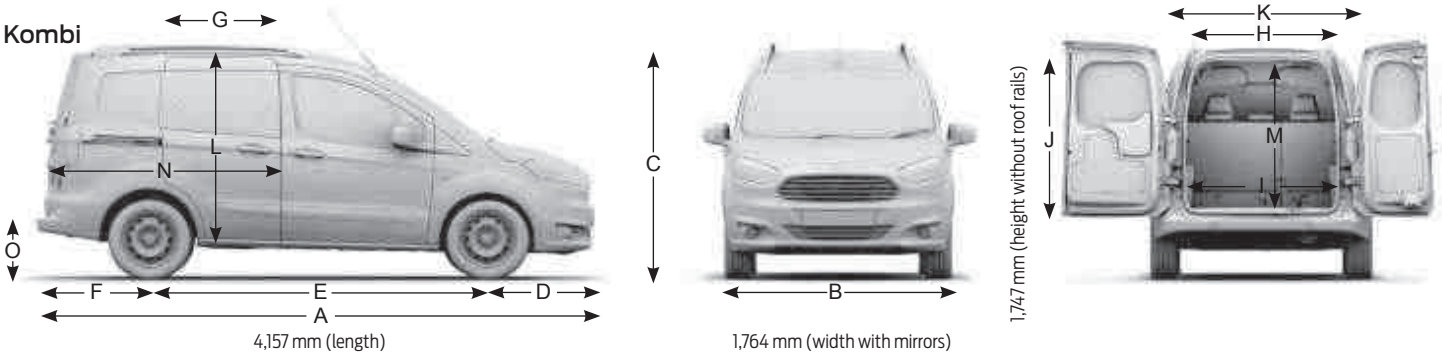
<b>A</b>	Overall length	4157
<b>B</b>	Overall width without mirrors	1764
<b>B</b>	Overall width with mirrors extended	2112
<b>C</b>	Overall height (unladen without roof rails)	1770
<b>D</b>	Front overhang	819
<b>E</b>	Wheelbase	2489
<b>F</b>	Rear overhang	849
<b>G</b>	Side door entry width (with bulkhead/without bulkhead)	453/601
<b>H</b>	Rear door opening width at floor level	1104
<b>I</b>	Loadspace width between wheel arches	1012
<b>J</b>	Rear door opening height	1100
<b>K</b>	Loadspace width	1488
<b>L</b>	Side door opening height	1044
<b>M</b>	Loadspace height floor to roof	1244
<b>N</b>	Loadspace length behind bulkhead (at floor)	1620
<b>N</b>	Loadspace length behind bulkhead (laden to belt line)	1358
<b>N</b>	Loadspace length with folding mesh bulkhead (passenger seat folded)	2593
<b>O</b>	Loading height (unladen)	564
Front track		1494
Rear track		1482
Ground clearance		179
Cargo volume (m³) Van VDA/SAE		1.9/2.3
Cargo volume (m³) Van with flexible bulkhead VDA/SAE		2.4/2.6
Cargo volume Kombi (m³) with 5 seats VDA/SAE		0.7/1.0
Cargo volume Kombi (m³) with second row seats folded VDA/SAE		1.7/1.9
Additional information		
Interior – Front		
Effective headroom		1152
Maximum effective leg room		1066
Shoulder room		1384
Hip room		1321
Turning circle (m)		
Kerb to kerb		10.5
Wall to wall		10.9

All dimensions (shown in mm) are subject to manufacturing tolerances and refer to minimum specification models and do not include additional equipment. These illustrations are for guidance only. Dimensions may vary dependent on the model and equipment fitted.

Van



Kombi





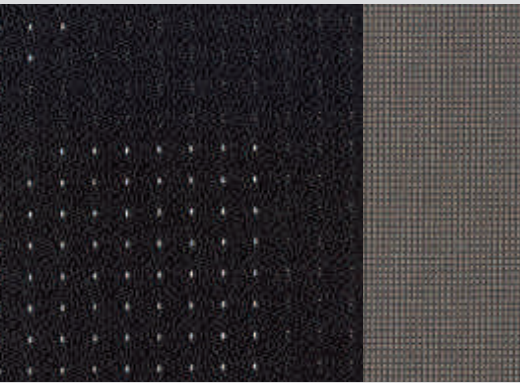
# Colour and trim

Choose the colour and trim that you think best reflects your business brand.



### 1. Base (Van and Kombi)

Seat insert: Netdot in Soft Charcoal.  
Seat bolster: Max in Charcoal Black.



### 2. Trend Van

Seat insert: Babylon in Charcoal Black.  
Seat bolster: Light Commercial Twill in Charcoal Black.



### 3. Sport Van

Seat insert: Groove design with partial Torino Leather in Charcoal Black.  
Seat bolster: Light Commercial Twill in Charcoal Black.



#### Blazer Blue

Solid body colour (not available on Sport Van)



#### Moondust Silver

Metallic body colour\* (not available on Sport Van)



#### Tectonic Silver

Metallic body colour\* (not available on Sport Van)



#### Frozen White

Solid body colour



#### Shadow Black

Mica body colour\*



#### Magnetic

Metallic body colour\*



#### Race Red

Solid body colour



#### Deep Impact Blue

Metallic body colour\*



#### Iceberg

Metallic body colour\* (available on Trend series only)

\*Mica and Metallic body colours are options at extra cost.  
**Note** The images used are to illustrate body colours only and may not reflect current specification. Colours and trims reproduced within this brochure may vary from the actual colours, due to the limitations of the printing processes used.

## 12-year perforation warranty\*\*

The new Transit Courier owes its durable exterior to a thorough multi-stage painting process. From the wax-injected steel body sections to the hard-wearing top coat, new materials and application processes will ensure it retains its good looks for many years to come.

\*\* 12 years from date of first registration. Subject to terms and conditions.

Zinc coating

Phosphate coat

Electrocoat

Top coat

Clearcoat







MY 201725 GBR en

**Illustrations, descriptions and specifications.** This catalogue was correct at the time of going to print. However, Ford policy is one of continuous product development. The right is reserved to change specifications, colours and prices of the models and items illustrated and described in this publication at any time. For the latest details always consult your Ford Dealer. **Optional equipment.** Throughout this publication, wherever a feature is described as being an 'Option' or 'Option Fitment/Pack' etc, you should assume that it will be at extra cost to the base vehicle, unless specifically stated to the contrary. All models and colour combinations are subject to availability. **Note.** Some images portrayed are of a pre-production model and/or are computer generated, therefore, the design/features on the final version of the vehicle may differ in various respects. In addition, some of the features shown on the vehicles may be optional. **Note.** This brochure contains both original Ford accessories as well as a range of products from our suppliers. **†**The identified accessories are carefully selected third party supplier branded accessories which do not come with a Ford warranty but are covered by the third party supplier's own warranty, the details of which can be obtained from your Ford Dealer. **Note.** The Bluetooth® word mark and logos are owned by the Bluetooth SIG, Inc. and any use of such marks by Ford Motor Company is under licence. The iPod word mark and logos are the property of Apple Inc. Other trademarks and trade names are those of their respective owners. **Note.** Some driver assistance features and safety features described in this brochure are designed to function using sensors, whose performance may be affected under certain weather or environmental conditions.

**The Government fuel figures** do not express or imply any guarantee of the fuel consumption of any particular vehicle. The vehicles themselves have not been tested and there are inevitably differences between individual vehicles of the same model. In addition, a vehicle may incorporate particular modifications. Furthermore, the driver's style and road and traffic conditions, as well as the extent to which the vehicle has been driven and the standard of maintenance, will affect its fuel consumption. **Insurance groups** are only as recommended by the Association of British Insurers. You should always consult your insurance adviser for confirmation.



Ford and BP – working together to reduce fuel consumption and emissions.



When you have finished with this brochure please recycle it.

#### Ford One Call

In the unlikely event that your Ford Dealer can't help you or if you need to speak to us directly, call 0203 564 4444

#### Ford Rental - local service nationwide

Car and Van rental from our latest model range. Contact your local Ford Dealer for more information



Sub 1-litre  
Ford 1.0 litre EcoBoost

#### Ford Motability

Call our Ford Motability team on 0345 6040019

#### Finance

Ford Credit Customer Services 0345 712 5490  
Ford Lease Customer Services 0344 600 1405  
Calls to 0344 and 0345 numbers are charged at the same rate as a standard 01 or 02 geographic number, even when calling from a mobile.

Published by Ford Motor Company Limited, Brentwood, Essex, England. Registered in England No. 235446.

FA 1587/4

BJN 205342. FoE H59E.  
PN 677515/0217/GBR en  
October 2016.

© Ford Motor Company Limited.

[www.ford.co.uk](http://www.ford.co.uk)





Part of Pure Vans Ltd  
Independent Van Dealer



PART OF PURE VANS LTD  
INDEPENDENT VAN DEALER



**PURE** VANS

Telephone: 01633-212944  
Email: [sales@purevans.com](mailto:sales@purevans.com)

[www.purevans.com](http://www.purevans.com)